

O V E N S**VULCAN****VC44E SERIES
DOUBLE DECK ELECTRIC CONVECTION OVENS**

Model VC44ED
Shown with optional casters

**SPECIFICATIONS**

Double section, electric convection oven, Vulcan Model No. (VC44ED) (VC44EC). Stainless steel front, sides, top and legs. Independently operated stainless steel doors with double pane windows. Non-sag insulation applied to the top, rear, sides, bottom and doors. Porcelain enamel on steel oven interiors measure 29"w x 22¹/₈"d x 20"h. Two interior oven lights per section. Five nickel plated oven racks per section measure 28¹/₄" x 20¹/₂". Eleven position nickel plated rack guides with positive rack stops per section. Each section heated by electric solid sheath elements rated at 12 KW. Furnished with a two speed 1/2 H.P. oven blower-motor per section. Oven cool switch for rapid cool down. 208 or 240 volt, 60 Hz, 1 or 3 phase.

Exterior Dimensions:

40¹/₄"w x 41¹/₈"d (includes motor & door handles) 37³/₄"d (includes motor only) x 70"h on 8" legs.

NSF listed. UL listed. UL listed to Canadian safety standards.

- VC44ED** Solid state temperature controls adjust from 150° to 500°F. 60 minute timer with audible alarm.
- VC44EC** Computer controls with digital time and temperature readouts. 99-hour timer with audible alarm. Roast and Hold cycle. One hundred programmable menu selections. Shelf I.D. programming.

STANDARD FEATURES

- Stainless steel front, sides, top and legs.
- Independently operated stainless steel doors with double pane windows.
- 25 total KW.
- 1/2 H.P. two speed oven blower-motor.
- Moisture vent.
- Oven cool switch for rapid cool down.
- Porcelain enamel on steel oven interiors.
- Five nickel plated oven racks with eleven rack positions per section.
- One year limited parts and labor warranty.

OPTIONS

- Complete prison package.
 - Security screws only.
- Casters.
- Simultaneous chain driven doors.
- 480V/60 Hz/1 or 3 phase.
- Second year extended limited parts and labor warranty.

ACCESSORIES

- Stainless steel rear motor enclosure.
- Extra oven rack(s).
- Rack hanger(s).
- Stainless steel drip pan.
- Down draft flue diverter for direct vent connection.

VULCAN

a division of ITW Food Equipment Group LLC

P.O. Box 696 ■ Louisville, KY 40201 ■ Toll-free: 1-800-814-2028 ■ Local: 502-778-2791 ■ Quote & Order Fax: 1-800-444-0602



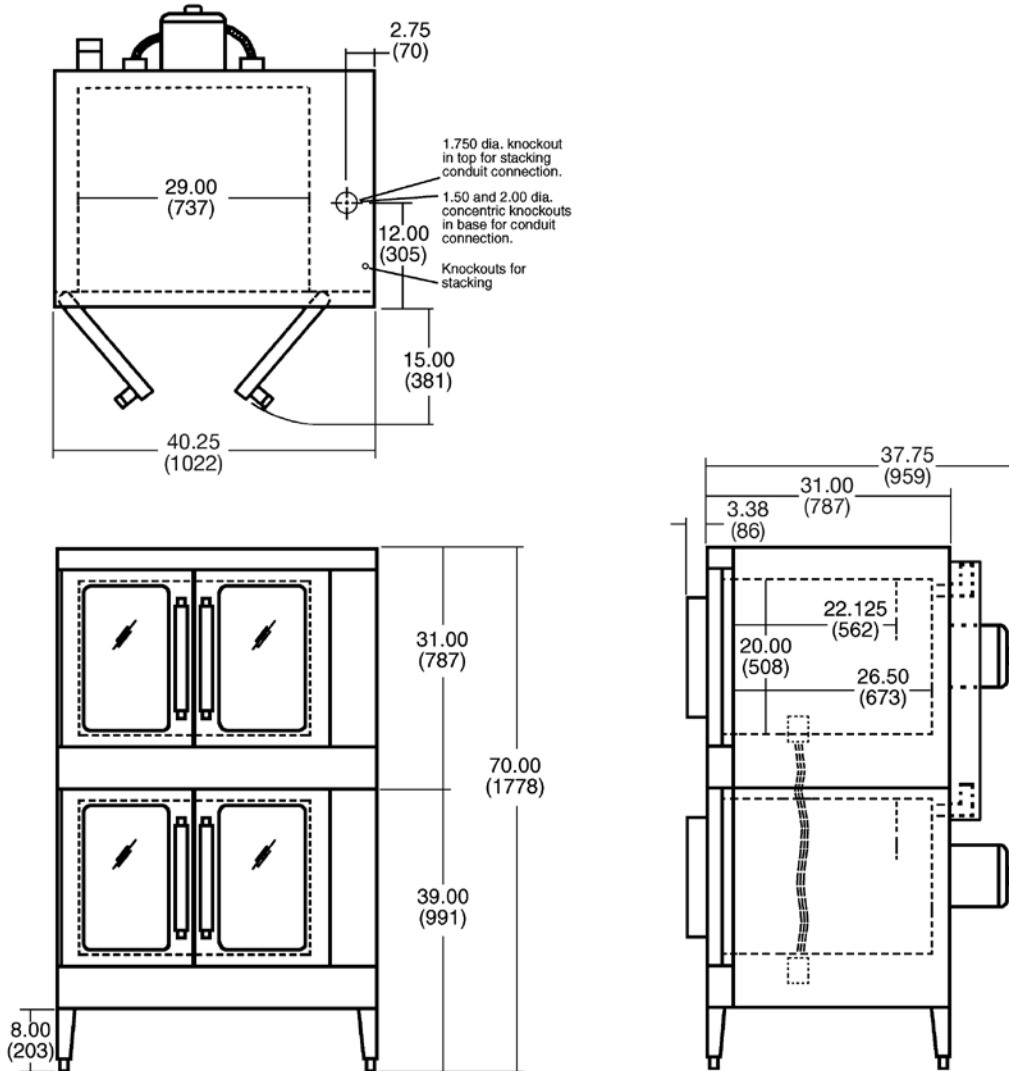
VC44E SERIES DOUBLE DECK ELECTRIC CONVECTION OVENS

OPTIONAL VOLTAGES

- 480 volt, 60 Hz, 3 phase.
- 220/380 volt, 50 Hz, 1 phase, 3 wire.
- 220/380 volt, 50 Hz, 3 phase, 4 wire.
- 240/415 volt, 50 Hz, 3 phase, 4 wire.

CLEARANCES

| | Combustible | Non-Combustible |
|------------|-------------|-----------------|
| Rear | 2" | 2" |
| Right Side | 4" | 4" |
| Left Side | 1" | 1" |



| MODEL NO. | TOTAL CONN. KW | 3 PHASE LOAD KW PER PHASE | | NOMINAL AMPS PER LINE WIRE | | | | | | | | | | | | WEIGHT | | | | | |
|-----------|----------------|---------------------------|---|----------------------------|-----|-----|----------|----|----|----------|----|----|----|-----|-----|---------|------|------------------------|-----|---------------------------|----|
| | | | | 3 PHASE | | | | | | | | | | | | 1 PHASE | | WITH SKIDS & PACKAGING | | WITHOUT SKIDS & PACKAGING | |
| | | | | 208 VOLT | | | 240 VOLT | | | 480 VOLT | | | | | | | | | | | |
| | | | | X-Y | Y-Z | X-Z | X | Y | Z | X | Y | Z | X | Y | Z | 208V | 240V | LBS. | KG | LBS. | KG |
| VC44E | 25 | 8 | 8 | 9 | 70 | 66 | 70 | 66 | 58 | 66 | 28 | 30 | 30 | 120 | 104 | 880 | 400 | 778 | 352 | | |



a division of ITW Food Equipment Group LLC

P.O. Box 696 ■ Louisville, KY 40201 ■ Toll-free: 1-800-814-2028 ■ Local: 502-778-2791 ■ Quote & Order Fax: 1-800-444-0602

NOTE: In line with its policy to continually improve its products, Vulcan reserves the right to change materials and specifications without notice.