



REVENT ONE26/S/G/

Round Single Rack Gas Oven

Max pan size:
1 single rack (18"x26")
Gas/electric models

R FEATURES

Baking quality

- Bakes everything without adjustments.
- New revolutionizing RTCC (Round Total Convection Control) system ensuring:
 - Minimized weight loss
 - Even bake
 - Perfectly even coloured products
 - Maximized bread volume
- New light weight RHVS (Round High Volume Steam) system easy to clean and ensuring:
 - Excellent texture
 - Excellent crust

Total Cost of Ownership

- Perfect bake without rejects.
- Reduced equipment footprint opens up new possibilities for small spaces.
- The oven is designed for 24/7 production based on the experience from our earlier 700 series.
- Most flexible choice for a diversified bakery assortment.
- Easy to use with self-instructive and angled GIAC touch control panel.
- Sliding door easy to handle and reducing risk for burn injuries.
- Multiple-alarm system allowing for up to four different products to be baked at once.

- World leading energy efficiency through:
 - Round baking chamber minimizing heated air volume
 - New patented Revent Heat Exchanger and modulating burner with high efficiency (89,5%) according to DIN 8766
 - Energy save mode
 - New High Tech Insulation
- Minimized service cost.
- The oven is manufactured in sections, making it possible to move through standard door openings. You will be "up and baking" the same day.

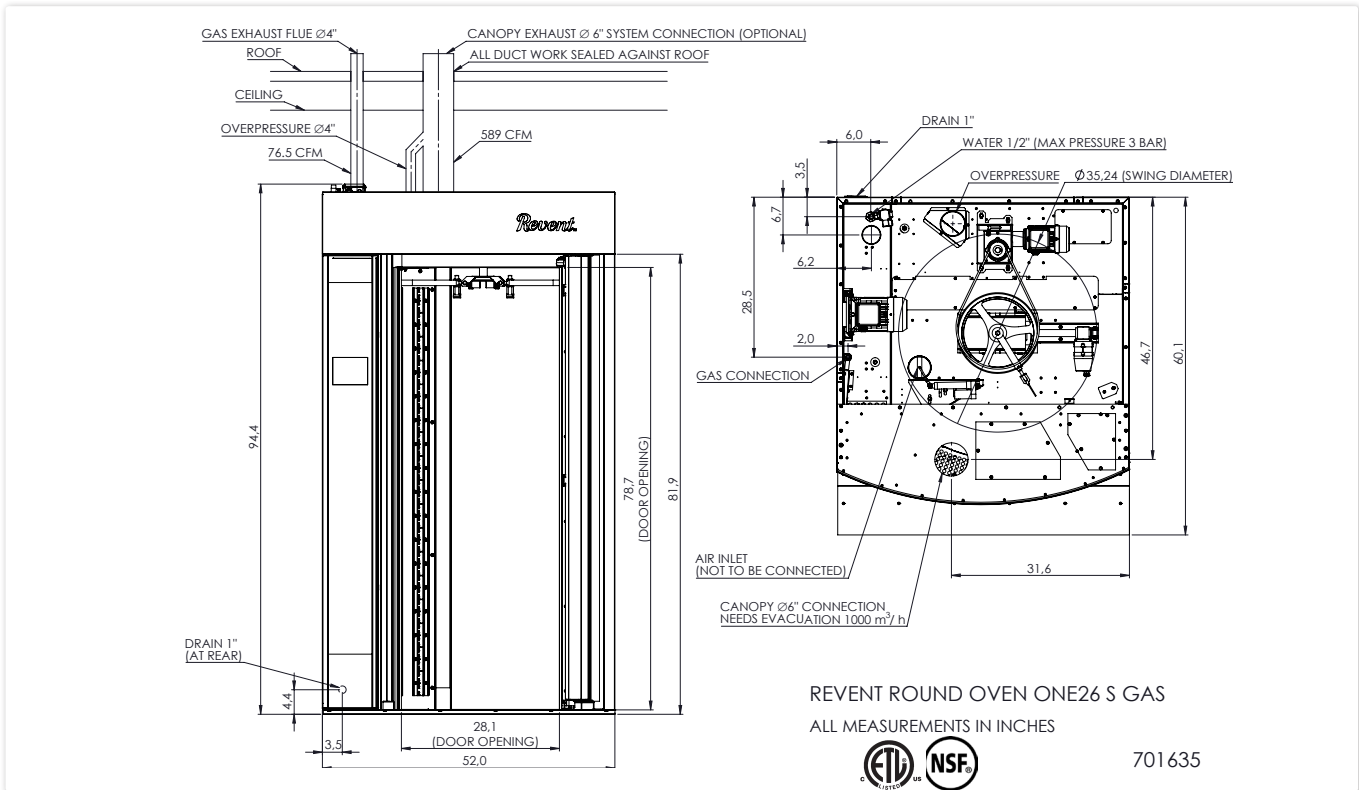
Sanitary

- Stainless steel.
- Non corrosive steam system.



In Bread We Trust

This is an example. For installation use the installation drawing and manual.



R-ONE26-S-G-US-190826

Specifications

Maximum Heat Capacity 170,000 btuh
 Temperature range 95-572°F
 Total shipping weight 1980 lbs*
 Standard shipping Ships assembled in one piece, crated.
 Minimum intake opening 52"x57" (one-piece shipment without skid)
 Minimum intake opening 45"x52" with Heat section and bake chamber separated
 Minimum section tilt up height and recommended service height: 100"
 Swing diameter 35.2"
 Max load of racklift 441 lbs
 Steam Generation 0.8 gals/20 sec at 482°F

Utility requirements

Electrical
 Standard 3PH208-220V+N 9A
 Optional 3PH440-480V 6A +1PH/120V/60 Hz 15A

*Final shipping weights will depend on the final order specifications. Continuous product development is a Revent policy. Therefore, we reserve the right to change specifications and/or design without prior notice. Pictures or drawings may include product options.

«5 wire» 3PH power supplies required. The stated power consumption is FLA. Minimum fuse size is dictated by local code. Contact factory for other power options.

Gas
 Natural Gas 170,000 btuh @ 7-14" w.c
 and 3/4" drop to 1/2" NPT
 Liquid propane
Water and Drain
 Water Supply 1/2" ø 35-45 PSI, cold
 Drain 32 mm
 Water quality/
 Chemical analysis *Revent Int. requirement*
 Magnesium, Mg <30 mg/ml
 Calcium, Ca 20 - 100 mg/l
 Hardness 4,0 - 7,0 dH
 pH at 20°C 7,5 - 8,5 pH
 Alkalinity >60 m/l
 Chlorides <10 mg/l
 Conductivity 200 - 800 mS/cm

Ventilation
Direct Venting:
Combustion flue:
 6" connection. Draft diverter included. Ducting and fan to be provided by customer per local and state codes. Draft of 76 cfm is required (-0.3" to - 0.15" w.c)

Canopy vent:
 6" connection. 589 cfm evacuation. Ducting and fan to be provided by customer.

Venting via external exhaust hood:
 Oven installed under an exhaust hood designed to vent by products of combustion and steam and vapor from the oven. Type of products baked and local code dictates if the exhaust hood should be a Type II (normal baking) or Type I (grease laden vapor) exhaust hood. Exhaust hood must be interlocked with oven.

Installation requirements

The oven must be installed on a levelled non-combustible surface. The oven may be installed flush against a wall. Only the front and top need to be left open for access. The space on top of the oven must be well ventilated and the temperature must not exceed 120°F. This is to avoid damage to electric components.

Options

- GIAC Extended PC Software
- Rack lifts for most types of racks.
- Platform NOT AVAILABLE.

Revent is ISO 9001 certified.

Revent sales representative:



Revent Incorporated
 22 Roosevelt Avenue, Suite 2, Somerset, NJ 08873
 Phone (732) 777-9433, Fax (732) 777-1187
 Toll Free 800-822-9642
 E-mail info@revent.com, www.revent.com