



www.redgoat.com

“C” SERIES 15" ROTOR



“C” Series
Regular Design



“C” Series
Offset Design



HP	THREE PHASE	
	Volts	Amps*
5	208	15.2
	230	13.6
	460	6.8
7½	208	23.0
	230	22.0
	460	11.0
10	208	33.0
	230	30.0
	460	15.0

*Ratings are for 60 Hz operation

ITEM NO. _____

MODEL “C”

“C” SERIES — BASIC DISPOSER				
Type	Model No.	HP	PH	Throat Size
REGULAR	C5P-R	5	3	7"
	C712P-R	7½	3	7"
	C10P-R	10	3	7"
OFFSET	C5P-O	5	3	7"
	C712P-O	7½	3	7"
	C10P-O	10	3	7"

OPTIONAL FEATURES:

- For 4 Impact Bar Option, add **4IB** to the end of the disposer model number.
- For High Drum Option (includes 4 impact bars), add **HD** to the end of the disposer model number.
- For Hard Chrome Option (includes 4 impact bars), add **HC** to the end of the disposer model number.
- ADAPTOR KITS: Adaptor kits are available to allow installation of Red Goat Disposers to virtually any sink or cone size or configuration. Refer to “Adaptor Kit Selection Guide” for specific kit model numbers.

PRODUCT INFORMATION:

- **APPLICATION:** Central waste areas of large institutions having large quantities of the tough waste. Ideal for large food processing houses having waste such as raw steer leg knuckle bones, ribs, poultry carcasses, king crabs, lobster shells and vegetable waste. Complies with military specifications, including shipboard use. Can be used with salt water applications (specify **HC** option).

DESIGN AND CONSTRUCTION:

- Waste chamber design permits dual directional operation when used with reversing control or switch, doubling the life cycle of the shattering mechanism.
- Basic body components are cast gray iron, machined, primed and painted. 15" Diameter rotor with (2) bolt-on reversible impact bars and sizing ring are cast ductile iron, machined, balanced and heat treated.
- Access to waste chamber by means of a cast aluminum lid having a 7" diameter throat opening, removable by means of quick-release head clamps.
- Flexible drain connector. Fastens quickly to either metal or PVC drain line (3" pipe size).
- Stainless steel legs and feet, adjustable from 0" to 2".
- Disposer connects to Cone or Sink Assembly by means of a neoprene isolation sleeve and (2) stainless steel clamps.
- Offset Design: For maximum space utilization, disposer is also available with a 10½" off-set waste chamber for both Cone and Sink attachments.

MOTOR:

- Reversing, continuous duty, 1725 RPM (1425 RPM, 50 Hz), full rated horsepower, double sealed, permanently lubricated ball bearings.
- Thermal overload protection (heaters) in control; must be sized as required.
- Available in 5, 7½ and 10 horsepower, three phase.
- Dual voltage winding: 208-230/460 Volts, 60 Hertz
190/380 Volts, 50 Hertz
(See table for ampere draw per horsepower, volts & phase)



- **CONTROLS: NOTE:** *Electrical switches or control centers not included, must be selected as required.*

Red Goat Disposers

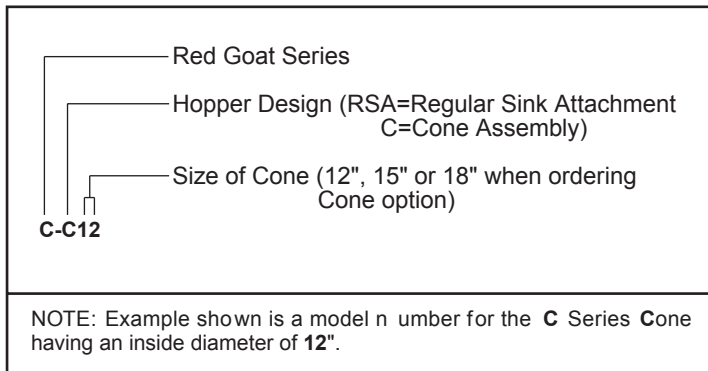
SOMAT COMPANY
165 Independence Court, Lancaster, PA 17601
717-397-5100 — FAX #717-397-1997
800-237-6628 ext. 181 — www.redgoat.com

TW Food Equipment Group

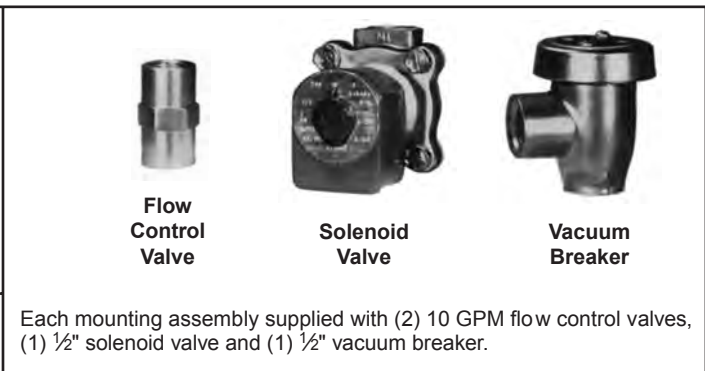
■ **MOUNTING ASSEMBLY OPTIONS:**

SINK ASSEMBLY	CONE ASSEMBLIES
 <p>Mounts to standard sink using our 7" I.D. Sink Assembly with vinyl silver trap scrapping ring.</p> <p><i>(Sink adaptor ring must be welded into sink.)</i></p> <p>For regular sink attachment. Adjustable leg support.</p> <p>Includes: Sink Adaptor, Vinyl Silver Trap Scrapping Ring, & Waterflow Controls shown below. (Specify voltage for Solenoid Valve.)</p> <p>Order . . . Model No. C-RSA</p>	 <p>Mounts to dishtable or sink using our stainless steel cone with water swirl inlet valve and vinyl silver trap scrapping ring. Our cones are available in three sizes: 12", 15" and 18" diameter, all with 7" diameter throat.</p> <p><i>(Cone must be welded into sink or dishtable.)</i></p> <p>For regular cone attachment to dishtable. Adjustable leg support.</p> <p>Includes: Stainless Steel Cone (choice of 12", 15" or 18"), Water Swirl Inlet Valve, Vinyl Silver Trap Scrapping Ring, & Waterflow Controls shown below. (Specify voltage for Solenoid Valve.)</p> <p>Order . . . Model No. C-C12 (12" Cone) or . . . Model No. C-C15 (15" Cone) or . . . Model No. C-C18 (18" Cone)</p>

■ **MOUNTING OPTION NUMBERING SYSTEM:**



■ **WATERFLOW CONTROLS:**



■ **INSTALLATION:**

(NOTE: All plumbing and electrical connections shall be made in compliance with applicable local construction codes.)

PLUMBING:

Inlet: Cold water supply to disposer shall be 1/2" service line with a minimum of 20 lbs. flow pressure, piped as close to disposer as possible. All disposer and control connections shall be 1/2" pipe size.

Sewer Outlet: 3" waste line shall have trap with conveniently located clean out. **Do not connect through a grease trap.** Avoid bends, elbows, tees, etc., to reduce the possibility of plumbing stoppage. A globe valve, used for metering flow must be installed between solenoid valve and cone or sink. Water swirl inlet valves should be located nearest operator.

ELECTRICAL:

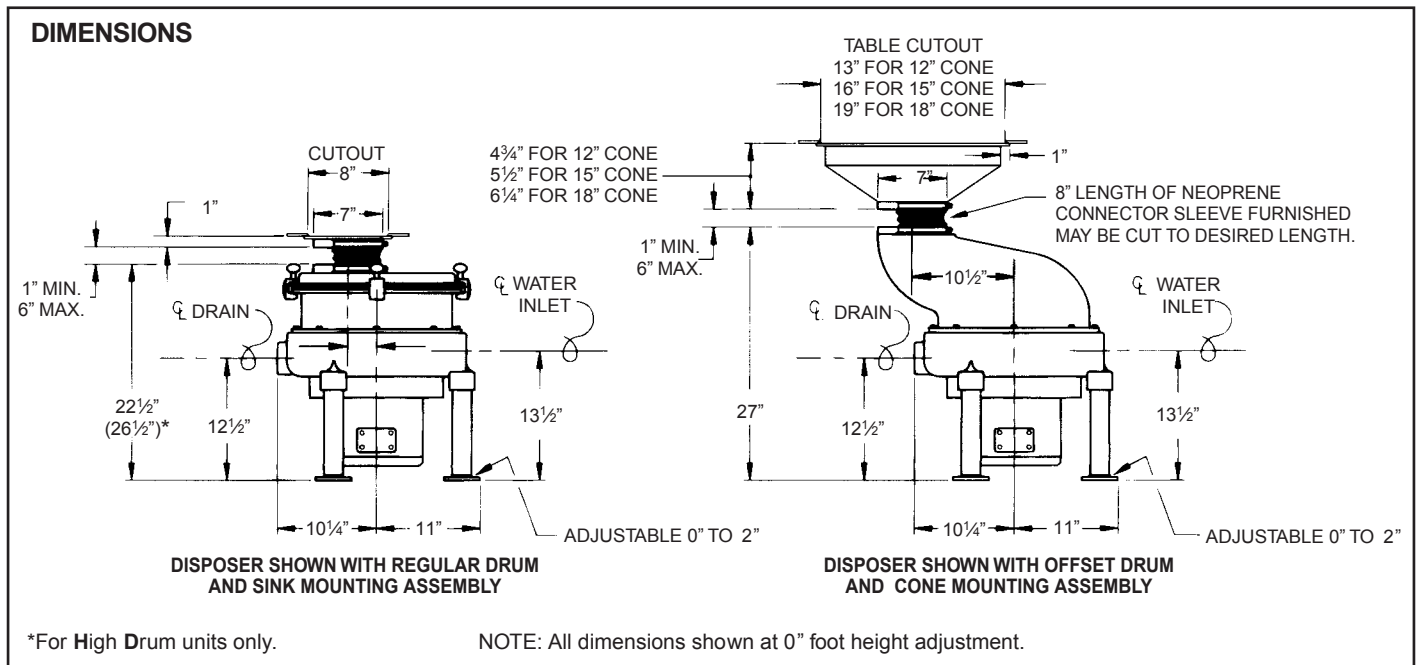
Follow guidelines set forth in NEC handbook. Disposer branch circuit shall be sized and fused (circuit breakers) as required by motor. The disposer must be connected to a grounded, metal, permanent wiring system; or a disposer-grounding conductor must be run with the circuit conductors and connected to the disposer-grounding terminal or lead on disposer. All connections, junction boxes and conduits must be type NEMA 4 or NEMA 4X.

TESTING:

Check for leaks in all plumbing connections. If installed with reversing options, check reversing. If installed with clean out cycle time delay, check two-minute cycle.

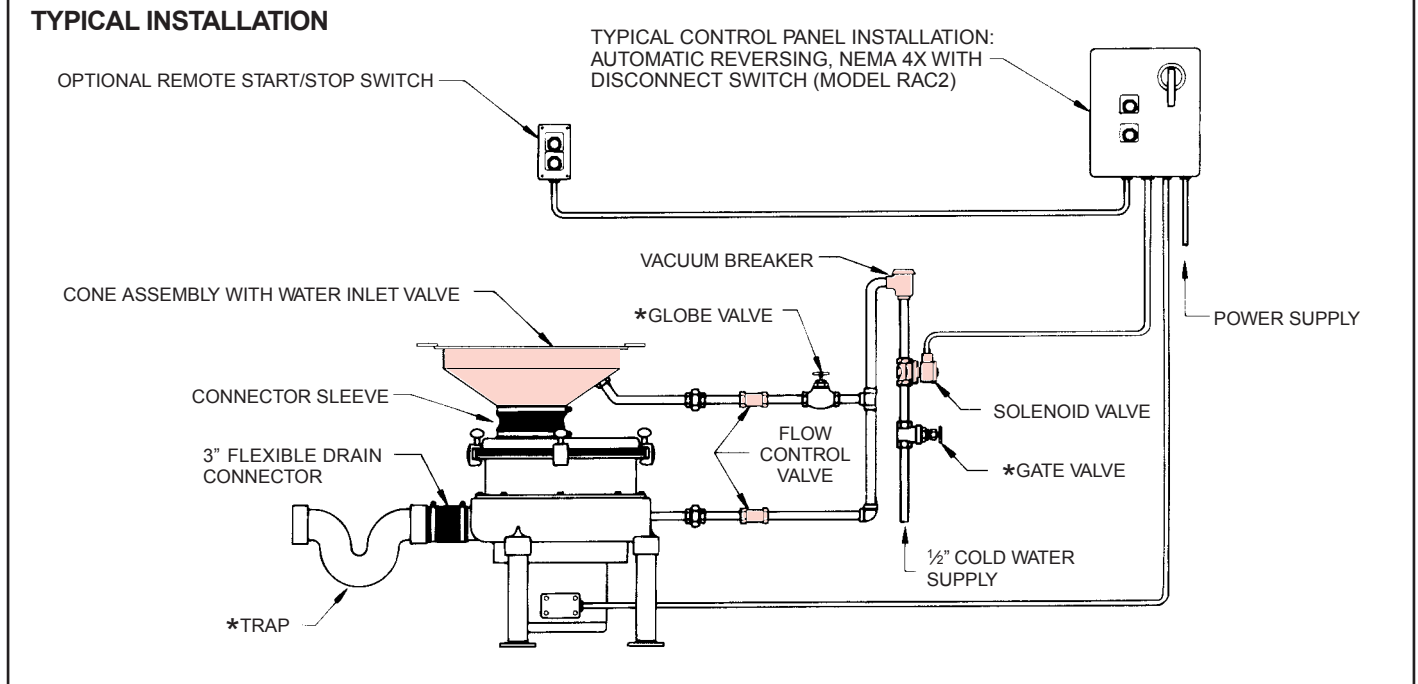
MODEL "C" 15" ROTOR DISPOSER

INSTALLATION DIAGRAMS:

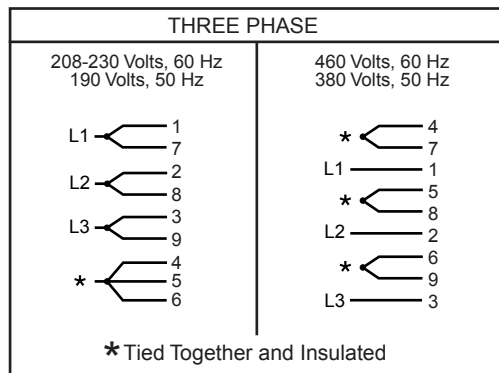


*For High Drum units only.

NOTE: All dimensions shown at 0" foot height adjustment.



MOTOR WIRING DIAGRAM:



INSTALLATION NOTES:

- All electrical connections must be wired per the latest edition of the National Electrical Code and any applicable local codes.
- All connectors, junction boxes and conduits must be type NEMA 4 (for watertight) or NEMA 4X (for watertight and corrosion resistant) installations.
- All plumbing must conform to local codes.
- Basic Disposer Assembly includes disposer, splash guard, mounting screws and 3" pipe size flexible drain coupling with clamps.
- Main disconnect and branch circuit protection to be provided by others.

CAUTION: Non metallic enclosure DOES NOT provide grounding between conduit connectors. Use grounding bushing and jumper wires provided by others.

*These items are not supplied by Red Goat Disposers.

**MODEL "C"
15" ROTOR DISPOSER**



BID SPECIFICATIONS: (Example)

Item No. _____ Disposer

Disposer shall be Red Goat model C 10P-R

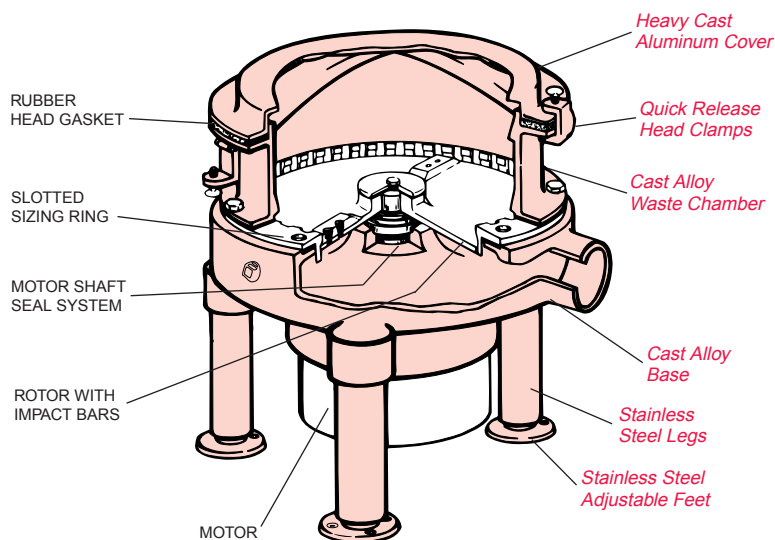
Construction: Cast iron waste chamber and base . Heat treated duct ile iron sizing r ing, 15" rotor with (2) re versible impact bars secured with stainless steel screws. Waste chamber lid to be aluminum with quick release clamps. Split housing design and flexible drain connection shall per mit ser vicing without br eaking plumbing or electr ic connections . Mounted on three adjustable stainless steel legs with flanged bolt-do wn feet. Provide with combination face and lip seal with additional lip sea l for triple motor moisture protection.

Motor: 10 hp, 460 volts, 60 hz, 3 phase, 1725 RPM. Reversing, continuous duty rated, with double sealed ball bearings.

Approvals and Warranty: Shall be UL (Underwriters Laboratories, Inc.) listed. Warranty shall cover parts, labor and mileage on all components for one year and replacement of basic body components for ten years.

Note: For new installation add one mounting assembly and one control panel.

WARRANTY:



"C" Series disposer pictured above.

STANDARD ONE YEAR WARRANTY
All RED GOAT disposer components, shown above in BLOCK pr int, are guaranteed against all def ects for the initial ONE YEAR period of use , as stated in the Warranty.

RED GOAT TEN YEAR WARRANTY
All RED GOAT basic body components, shown above in *italicized* print, are guaranteed to remain ser viceable for at least TEN YEARS, as stated in the Warranty.

SHIPPING DIMENSIONS AND WEIGHTS:

MODEL NO.	WIDTH		DEPTH		HEIGHT		WEIGHT		VOLUME	
	in.	mm	in.	mm	in.	mm	lbs.	kg	cu.ft.	cu.m
C5P-R	26	660	21	533	25	635	300	136	7.9	.22
C712P-R	26	660	21	533	25	635	305	139	7.9	.22
C10P-R	26	660	21	533	25	635	310	141	7.9	.22
C5P-O	26	660	21	533	29	737	340	155	9.2	.26
C712P-O	26	660	21	533	29	737	345	157	9.2	.26
C10P-O	26	660	21	533	29	737	350	159	9.2	.26

Red Goat is not responsible for any typographical errors. Due to continued product improvement specifications are subject to change without prior notice.

Red Goat Disposers

SOMAT COMPANY
165 Independence Court, Lancaster, PA 17601
717-397-5100 — FAX #717-397-1997
800-237-6628 ext. 181 — www.redgoat.com

