



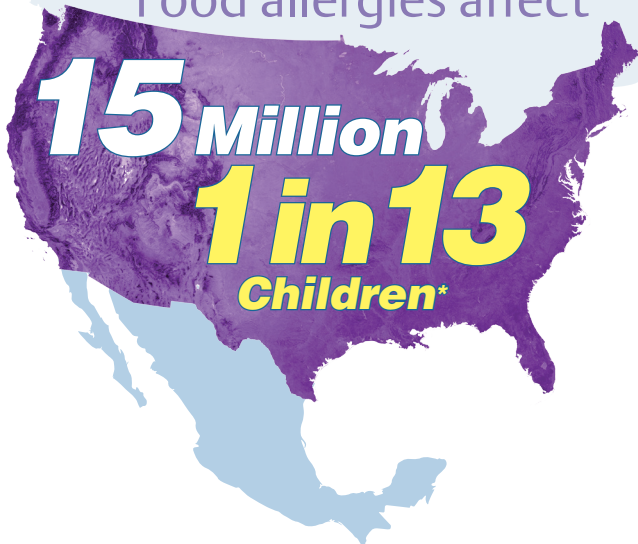
myCart Series™

Control cross-contact and protect your customers with the

# Allergen Free Zone

# myCart

Food allergies affect



# 50%

of fatal episodes from food allergens occur outside the home.\*

\*US - FARE



- myCart personalization labels come 2 per cart.
- Additional legroom puts more distance between the shelves and you.
- Corrosion proof, smooth surfaces easily wipe clean.
- Right-sized for common containers and racks.
- Sturdy construction: 300lb. (136kg), 400lb. (181kg), and 500lb. (227kg) capacity models available.

myCart Series™ is NSF listed



### Easy-grip handle and utility tray

- > Small footprint for tight spaces.
- > Accommodates Metro tote boxes and ISO totes.



MY1627

MY2030 cart handle has built-in recessed support channel to manage odd shaped items.

- > Right-sized to fit : Glass & dish racks, bussing totes, silverware bins, milk crates.



MY2030

MY2636 cart handle has a built-in slot to hold scanners and labelers.

- > Ideal for large bulky items. 5" (127mm) caster makes cart easier to maneuver. 3-shelf model holds up to 500lbs.



MY2636



Gray

Black

Blue with built-in Microban antimicrobial product protection

Allergen Purple

## Allergen Free Zone myCart:

Actual Width/Length/Height including the handle (in.)	(mm)	Description	Posts	Load Rating Per Cart (lbs.)	(kg)	Approx. Pkd. Wt. (lbs.)	(kg)	Cat. No. Purple
23 <sup>7</sup> / <sub>16</sub> x 34 <sup>3</sup> / <sub>8</sub> x 35 <sup>1</sup> / <sub>2</sub>	595x873.3x901.7	2-shelf base model	chrome-plated	300	136	33	14.9	MY2030-24AP
23 <sup>7</sup> / <sub>16</sub> x 34 <sup>3</sup> / <sub>8</sub> x 35 <sup>1</sup> / <sub>2</sub>	595.3x873.3x901.7	3-shelf base model	chrome-plated	400	181	41.5	18.8	MY2030-34AP

## Standard Models:

Actual Width/Length/Height including the handle (in.)	(mm)	Description	Posts	Load Rating Per Cart (lbs.)	(kg)	Approx. Pkd. Wt. (lbs.)	(kg)	Cat. No. Gray	Cat. No. Black	Cat. No. Blue with Antimicrobial
18 <sup>5</sup> / <sub>16</sub> x 31 <sup>1</sup> / <sub>2</sub> x 35 <sup>1</sup> / <sub>2</sub>	465.2x800.1x901.7	2-shelf base model	chrome-plated	300	136	28.5	12.9	MY1627-24G	MY1627-24BL	MY1627-24BU
18 <sup>5</sup> / <sub>16</sub> x 31 <sup>1</sup> / <sub>2</sub> x 35 <sup>1</sup> / <sub>2</sub>	465.2x800.1x901.7	3-shelf base model	chrome-plated	400	181	34	15.4	MY1627-34G	MY1627-34BL	MY1627-34BU
23 <sup>7</sup> / <sub>16</sub> x 34 <sup>3</sup> / <sub>8</sub> x 35 <sup>1</sup> / <sub>2</sub>	595x873.3x901.7	2-shelf base model	chrome-plated	300	136	33	14.9	MY2030-24G	MY2030-24BL	MY2030-24BU
23 <sup>7</sup> / <sub>16</sub> x 34 <sup>3</sup> / <sub>8</sub> x 35 <sup>1</sup> / <sub>2</sub>	595.3x873.3x901.7	3-shelf base model	chrome-plated	400	181	41.5	18.8	MY2030-34G	MY2030-34BL	MY2030-34BU
27 <sup>11</sup> / <sub>16</sub> x 40 <sup>1</sup> / <sub>4</sub> x 36 <sup>7</sup> / <sub>8</sub>	703.3x1022.4x936.6	2-shelf base model	chrome-plated	400	181	40	18.1	MY2636-25G	MY2636-25BL	MY2636-25BU
27 <sup>11</sup> / <sub>16</sub> x 40 <sup>1</sup> / <sub>4</sub> x 36 <sup>7</sup> / <sub>8</sub>	703.3x1022.4x936.6	3-shelf base model	chrome-plated	500	227	51	23.1	MY2636-35G	MY2636-35BL	MY2636-35BU
18 <sup>5</sup> / <sub>16</sub> x 31 <sup>1</sup> / <sub>2</sub> x 35 <sup>1</sup> / <sub>2</sub>	465.2x800.1x901.7	2-shelf cart upgrade	stainless steel	300	136	28.5	12.9	-	-	MY1627-24BU-SS
18 <sup>5</sup> / <sub>16</sub> x 31 <sup>1</sup> / <sub>2</sub> x 35 <sup>1</sup> / <sub>2</sub>	465.2x800.1x901.7	3-shelf cart upgrade	stainless steel	400	181	34	15.4	-	-	MY1627-34BU-SS

## Accessories



### Waste Basket

Model Number	Description	Fits Cart	Width/Height/Depth (in.)	(mm)	Approx. Pkd/Wt. (lbs.)	(kg)
MYWB1	Wastebasket (including holder)	MY1627	17 <sup>7</sup> / <sub>8</sub> x 16 1/4 x 14 3/4	454x413x375	5.7	2.5
MYWB2	Wastebasket (including holder)	MY2030	23 x 16 1/4 x 14 3/4	584x413x375	5.8	2.6
MF222	Wastebasket Only	MY1627, MY230	14 3/8 x 15 3/8 x 10 3/8	365x391x264	2.8	1.3



### Utility Bin

Model Number	Description	Fits Cart	Width/Height/Depth (in.)	(mm)	Approx. Pkd/Wt. (lbs.)	(kg)
MYUB1	Utility Bin (including holder)	MY1627	17 <sup>7</sup> / <sub>8</sub> x 7 x 15 1/4	454x178x387	5	2.2
MYUB2	Utility Bin (including holder)	MY2030	23 x 7 x 15 1/4	584x178x387	5.1	2.3
UB1	Utility Bin Only	MY1627, MY230	16 3/8 x 6 x 11	416x152x279	2	0.9

© 2015 InterMetro Industries Corporation, Wilkes-Barre, PA 18705  
 The Emerson logo is a trademark and a service mark of Emerson Electric Company.  
 MICROBAN is a registered trademark of Microban Products Company.  
 \* Microban® antimicrobial protection does not protect against disease causing microorganisms.



WWW.METRO.COM  
1.800.992.1776



EMERSON. CONSIDER IT SOLVED.