



Item# _____

Job _____



“Made to Order Dollies,” Plate Casters, Dolly Frames, Pitched Aluminum Dust Cover

METRO® PLATE CASTERS

- **Standard Metro Plate-Type** casters fit all Metro dolly frames.
- **Resilient Rubber Tread:** A molded, soft tread that provides good floor protection along with quiet operation. Non-marking.
- **Polyurethane Tread:** Long-wearing; resists abrasion. Non-marking, shock absorbing.
- **Neoprene Tread:** Molded, all-purpose rubber tread. Provides good floor protection along with quiet operation. Non-marking.
- **Wheel Brakes:** Foot-operated. Available on all caster models.
- **Caster Load Ratings:** From 225 lbs. (102kg) to 600 lbs. (272kg).

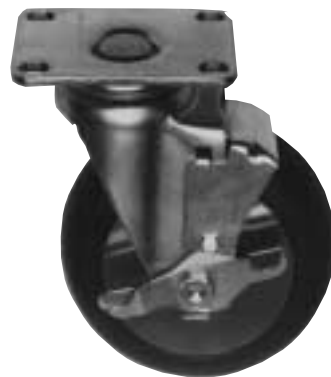
Note: Casters for specific applications are available on request. For additional information, contact InterMetro Industries Corporation or your InterMetro representative.



B5P Polyurethane



6P Polyurethane



B5DNB with Wheel Brake



InterMetro Industries Corporation
North Washington Street
Wilkes-Barre, PA 18705
www.metro.com



Dimensions

Castors — Plate Type

| Model No. | Type | Wheel Dia. | | Face | | Wheel Tread | Load Rating | | Weight Ea. | |
|-----------|-------------|------------|------|-------------------------------|------|----------------|-------------|------|-------------------------------|-------------------------------|
| | | (in.) | (mm) | (in.) | (mm) | | (lbs.) | (kg) | (lbs.) | (kg) |
| B5DN | Swivel | 5 | 127 | 1 ³ / ₈ | 35 | Donut Neoprene | 225 | 102 | 2 ¹ / ₈ | 1 |
| B5DNB | Brake | 5 | 127 | 1 ³ / ₈ | 35 | Donut Neoprene | 225 | 102 | 2 ¹ / ₄ | 1 |
| B5DNR | Rigid | 5 | 127 | 1 ³ / ₈ | 35 | Donut Neoprene | 225 | 102 | 2 | 1 |
| B5P | Swivel | 5 | 127 | 1 ¹ / ₄ | 32 | Polyurethane | 300 | 135 | 2 ¹ / ₈ | 1 |
| B5PB | Brake | 5 | 127 | 1 ¹ / ₄ | 32 | Polyurethane | 300 | 135 | 2 ¹ / ₄ | 1 |
| B5PR | Rigid | 5 | 127 | 1 ¹ / ₄ | 32 | Polyurethane | 300 | 135 | 2 | 1 |
| C5P | Swivel | 5 | 127 | 2 | 51 | Polyurethane | 500 | 230 | 8 | 3 ¹ / ₂ |
| C5PB | Brake | 5 | 127 | 2 | 51 | Polyurethane | 500 | 230 | 8 ¹ / ₄ | 3 ³ / ₄ |
| C5PR | Rigid | 5 | 127 | 2 | 51 | Polyurethane | 500 | 230 | 8 | 3 ¹ / ₂ |
| C6P | Swivel | 6 | 152 | 2 | 51 | Polyurethane | 500 | 230 | 4 ³ / ₄ | 2 |
| C6PB | Brake | 6 | 152 | 2 | 51 | Polyurethane | 500 | 230 | 4 ⁷ / ₈ | 2 ¹ / ₄ |
| C6PR | Rigid | 6 | 152 | 2 | 51 | Polyurethane | 500 | 230 | 3 ¹ / ₂ | 1 ¹ / ₂ |
| C6PS/L-LH | Swivel/Lock | 6 | 152 | 2 | 51 | Polyurethane | 500 | 230 | 5 | 2 ¹ / ₄ |
| C8P | Swivel | 8 | 203 | 2 | 51 | Polyurethane | 700 | 320 | 5 ³ / ₄ | 2 ¹ / ₂ |
| C8PB | Brake | 8 | 203 | 2 | 51 | Polyurethane | 700 | 320 | 5 ⁷ / ₈ | 2 ¹ / ₂ |
| C8PR | Rigid | 8 | 203 | 2 | 51 | Polyurethane | 700 | 320 | 4 ¹ / ₂ | 2 |
| C8PS/L-LH | Swivel/Lock | 8 | 203 | 2 | 51 | Polyurethane | 700 | 320 | 6 | 2 ³ / ₄ |
| 6P | Swivel | 6 | 152 | 2 | 51 | Polyurethane | 700 | 320 | 5 ¹ / ₄ | 2 ¹ / ₂ |
| BL6P* | Brake/Lock | 6 | 152 | 2 | 51 | Polyurethane | 700 | 320 | 7 ¹ / ₄ | 3 ¹ / ₂ |
| 6PR | Rigid | 6 | 152 | 2 | 51 | Polyurethane | 700 | 320 | 5 | 2 |
| 8P | Swivel | 8 | 203 | 2 | 51 | Polyurethane | 700 | 320 | 6 ¹ / ₂ | 3 |
| BL8P* | Brake/Lock | 8 | 203 | 2 | 51 | Polyurethane | 700 | 320 | 9 | 4 |
| 8PR | Rigid | 8 | 203 | 2 | 51 | Polyurethane | 700 | 320 | 6 | 2 ³ / ₄ |

*Sets include two casters plus locking mechanism.

Stainless Steel Cart-Washable Casters — Plate Type

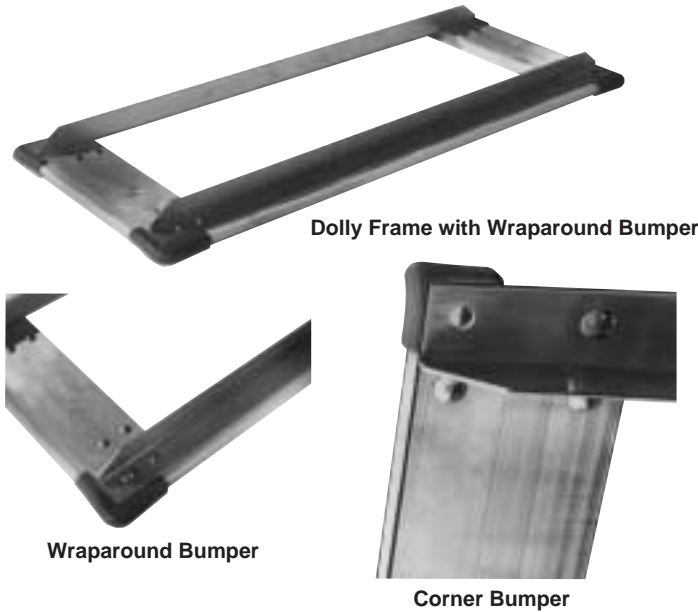
(Grease sealed with zerk fittings in swivel and axle or wheel)

| Model No. | Type | Wheel Dia. | | Face | | Wheel Tread | Load Rating | | Weight Ea. | |
|---------------|-------------|------------|------|-------------------------------|------|--------------|-------------|------|-------------------------------|-------------------------------|
| | | (in.) | (mm) | (in.) | (mm) | | (lbs.) | (kg) | (lbs.) | (kg) |
| B5PGSSS | Swivel | 5 | 127 | 1 ¹ / ₄ | 32 | Polyurethane | 300 | 135 | 2 ¹ / ₈ | 1 |
| B5PBGSSS | Brake | 5 | 127 | 1 ¹ / ₄ | 32 | Polyurethane | 300 | 135 | 2 ¹ / ₄ | 1 |
| B5PRGSSS | Rigid | 5 | 127 | 1 ¹ / ₄ | 32 | Polyurethane | 300 | 135 | 2 | 1 |
| C6PGSSS | Swivel | 6 | 152 | 1 ¹ / ₂ | 38 | Polyurethane | 600 | 270 | 4 ³ / ₄ | 2 |
| C6PBGSSS | Brake | 6 | 152 | 1 ¹ / ₂ | 38 | Polyurethane | 600 | 270 | 4 ⁷ / ₈ | 2 ¹ / ₄ |
| C6PRGSSS | Rigid | 6 | 152 | 1 ¹ / ₂ | 38 | Polyurethane | 600 | 270 | 3 ¹ / ₂ | 1 ¹ / ₂ |
| C6PS/LGSSS-LH | Swivel/Lock | 6 | 152 | 1 ¹ / ₂ | 38 | Polyurethane | 600 | 270 | 5 | 2 |
| C8PGSSS | Swivel | 8 | 203 | 1 ¹ / ₂ | 38 | Polyurethane | 800 | 365 | 5 ³ / ₄ | 2 ¹ / ₂ |
| C8PBGSSS | Brake | 8 | 203 | 1 ¹ / ₂ | 38 | Polyurethane | 800 | 365 | 5 ⁷ / ₈ | 2 ¹ / ₂ |
| C8PRGSSS | Rigid | 8 | 203 | 1 ¹ / ₂ | 38 | Polyurethane | 800 | 365 | 4 ¹ / ₂ | 2 |
| C8PS/LGSSS-LH | Swivel/Lock | 8 | 203 | 1 ¹ / ₂ | 38 | Polyurethane | 800 | 365 | 6 | 2 ³ / ₄ |

NOTE 1: Brakes are foot-operated.

NOTE 2: 8" (203mm) casters should not be used on units less than 21" (533mm) wide.

NOTE 3: In the event that casters are to be used for cart wash applications or applications requiring towed carts or swivel locks, please contact InterMetro Industries Corporation or your InterMetro representative for special recommendations.



Dolly Frame with Wraparound Bumper

Wraparound Bumper

Corner Bumper

METRO® TRUCK DOLLY FRAMES

- **Versatile:** Fits footed posts and can be used to mount Super Erecta Shelf® shelving units. Available in sizes to match every shelf length and 18" (455mm), 21" (530mm) and 24" (610mm) widths. Accept dozens of caster types and combinations.
- **Strong:** Heavy-gauge, bolted construction. Available in aluminum, chrome-plated steel or stainless steel.
- **Corner Bumper:** Vinyl. Standard on all dolly frames unless otherwise specified.
- **Wraparound Bumper:** Metro's patented wraparound bumper system. Extruded vinyl inserts with aluminum reinforcement fit into frame and into specially molded corner bumpers. Recommended for most applications. To order, add suffix "W" after catalog numbers for dolly frame and casters.

- **Order by component:** If casters are to be ordered, list dolly frame and caster numbers separately. Example: 1-D1824NCB, 4-B5DN – This represents one aluminum 18" x 24" (455 x 610mm) dolly frame with four 5" (127mm) plate swivel casters.

| Shelf Width (in.) (mm) | Shelf Length (in.) (mm) | Aluminum | | Chrome | | Stainless | | | |
|------------------------|-------------------------|-----------------------------|---------------------------------|-----------------------------|---------------------------------|-----------------------------|---------------------------------|----------|---------|
| | | Cat. No. with Corner Bumper | Cat. No. with Wraparound Bumper | Cat. No. with Corner Bumper | Cat. No. with Wraparound Bumper | Cat. No. with Corner Bumper | Cat. No. with Wraparound Bumper | | |
| 18 | 455 | 24 | 610 | D1824NCB | D1824NP | D1824CCB | D1824CP | D1824SCB | D1824SP |
| 18 | 455 | 30 | 760 | D1830NCB | D1830NP | D1830CCB | D1830CP | D1830SCB | D1830SP |
| 18 | 455 | 36 | 910 | D1836NCB | D1836NP | D1836CCB | D1836CP | D1836SCB | D1836SP |
| 18 | 455 | 42 | 1060 | D1842NCB | D1842NP | D1842CCB | D1842CP | D1842SCB | S1842SP |
| 18 | 455 | 48 | 1220 | D1848NCB | D1848NP | D1848CCB | D1848CP | D1848SCB | D1848SP |
| 18 | 455 | 60 | 1525 | D1860NCB | D1860NP | D1860CCB | D1860CP | D1860SCB | D1860SP |
| 18 | 455 | 72 | 1825 | D1872NCB | D1872NP | D1872CCB | D1872CP | D1872SCB | D1872SP |
| 21 | 530 | 24 | 610 | D2124NCB | D2124NP | D2124CCB | D2124CP | D2124SCB | D2124SP |
| 21 | 530 | 30 | 760 | D2130NCB | D2130NP | D2130CCB | D2130CP | D2130SCB | D2130SP |
| 21 | 530 | 36 | 910 | D2136NCB | D2136NP | D2136CCB | D2136CP | D2136SCB | D2136SP |
| 21 | 530 | 42 | 1060 | D2142NCB | D2142NP | D2142CCB | D2142CP | D2142SCB | D2142SP |
| 21 | 530 | 48 | 1220 | D2148NCB | D2148NP | D2148CCB | D2148CP | D2148SCB | D2148SP |
| 21 | 530 | 60 | 1525 | D2160NCB | D2160NP | D2160CCB | D2160CP | D2160SCB | D2160SP |
| 21 | 530 | 72 | 1825 | D2172NCB | D2172NP | D2172CCB | D2172CP | D2172SCB | D2172SP |
| 24 | 610 | 24 | 610 | D2424NCB | D2424NP | D2424CCB | D2424CP | D2424SCB | D2424SP |
| 24 | 610 | 30 | 760 | D2430NCB | D2430NP | D2430CCB | D2430CP | D2430SCB | D2430SP |
| 24 | 610 | 36 | 910 | D2436NCB | D2436NP | D2436CCB | D2436CP | D2436SCB | D2436SP |
| 24 | 610 | 42 | 1060 | D2442NCB | D2442NP | D2442CCB | D2442CP | D2442SCB | D2442SP |
| 24 | 610 | 48 | 1220 | D2448NCB | D2448NP | D2448CCB | D2448CP | D2448SCB | D2448SP |
| 24 | 610 | 60 | 1525 | D2460NCB | D2460NP | D2460CCB | D2460CP | D2460SCB | D2460SP |
| 24 | 610 | 72 | 1825 | D2472NCB | D2472NP | D2472CCB | D2472CP | D2472SCB | D2472SP |

Standard dolly frame for Super Erecta Shelf® shelving is aluminum. If heavy-duty use requires greater strength, chrome-plated steel frames are available; or for strength plus the ultimate in corrosion resistance, stainless steel frames are available.

Job _____

PITCHED ALUMINUM DUST COVER FOR DOLLIES



- **Versatile:** Fits on dolly and serves to shield lower shelf contents against dust or dirt particles which caster rotation could stir up from floor. Recommended for wire shelf trucks in many applications.

Dimensions

| Shelf Width (in.) (mm) | Shelf Length (in.) (mm) | Dust Cover Cat. No. | Shelf Width (in.) (mm) | Shelf Length (in.) (mm) | Dust Cover Cat. No. | Shelf Width (in.) (mm.) | Shelf Length (in.) (mm) | Dust Cover Cat. No. |
|---------------------------|----------------------------|------------------------|---------------------------|----------------------------|------------------------|----------------------------|----------------------------|------------------------|
| 18 455 | 24 610 | DCT1824N | 21 530 | 24 610 | DCT2124N | 24 610 | 24 610 | DCT2424N |
| 18 455 | 30 760 | DCT1830N | 21 530 | 30 760 | DCT2130N | 24 610 | 30 760 | DCT2430N |
| 18 455 | 36 910 | DCT1836N | 21 530 | 36 910 | DCT2136N | 24 610 | 36 910 | DCT2436N |
| 18 455 | 42 1060 | DCT1842N | 21 530 | 42 1060 | DCT2142N | 24 610 | 42 1060 | DCT2442N |
| 18 455 | 48 1220 | DCT1848N | 21 530 | 48 1220 | DCT2148N | 24 610 | 48 1220 | DCT2448N |
| 18 455 | 60 1520 | DCT1860N | 21 530 | 60 1520 | DCT2160N | 24 610 | 60 1520 | DCT2460N |
| 18 455 | 72 1820 | DCT1872N | 21 530 | 72 1820 | DCT2172N | 24 610 | 72 1820 | DCT2472N |

Manufactured by:



InterMetro Industries Corporation
 North Washington Street, Wilkes-Barre, PA 18705
 Phone: 570-825-2741 • Fax: 570-825-2852
 For Product Information Call: 1-800-433-2232
 Visit Our Web Site: www.metro.com

L02-045B
 9/00
 Printed in U.S.A.

Information and specifications are subject to change
 without notice. Please confirm at time of order.