



Item# _____

Job _____



“Made to Order Dollies,” Plate Casters, Dolly Frames, Pitched Aluminum Dust Cover

METRO® PLATE CASTERS

- **Standard Metro Plate-Type** casters fit all Metro dolly frames.
- **Resilient Rubber Tread:** A molded, soft tread that provides good floor protection along with quiet operation. Non-marking.
- **Polyurethane Tread:** Long-wearing; resists abrasion. Non-marking, shock absorbing.
- **Neoprene Tread:** Molded, all-purpose rubber tread. Provides good floor protection along with quiet operation. Non-marking.
- **Wheel Brakes:** Foot-operated. Available on all caster models.
- **Caster Load Ratings:** From 225 lbs. (102kg) to 600 lbs. (272kg).

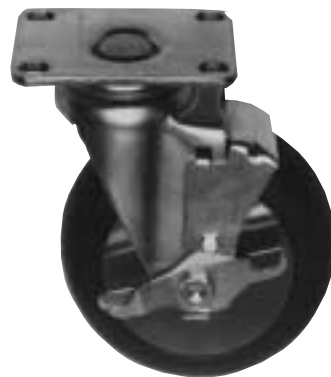
Note: Casters for specific applications are available on request. For additional information, contact InterMetro Industries Corporation or your InterMetro representative.



B5P Polyurethane



6P Polyurethane



B5DNB with Wheel Brake



InterMetro Industries Corporation
North Washington Street
Wilkes-Barre, PA 18705
www.metro.com



Dimensions

Castors — Plate Type

Model No.	Type	Wheel Dia.		Face		Wheel Tread	Load Rating		Weight Ea.	
		(in.)	(mm)	(in.)	(mm)		(lbs.)	(kg)	(lbs.)	(kg)
B5DN	Swivel	5	127	1 ³ / ₈	35	Donut Neoprene	225	102	2 ¹ / ₈	1
B5DNB	Brake	5	127	1 ³ / ₈	35	Donut Neoprene	225	102	2 ¹ / ₄	1
B5DNR	Rigid	5	127	1 ³ / ₈	35	Donut Neoprene	225	102	2	1
B5P	Swivel	5	127	1 ¹ / ₄	32	Polyurethane	300	135	2 ¹ / ₈	1
B5PB	Brake	5	127	1 ¹ / ₄	32	Polyurethane	300	135	2 ¹ / ₄	1
B5PR	Rigid	5	127	1 ¹ / ₄	32	Polyurethane	300	135	2	1
C5P	Swivel	5	127	2	51	Polyurethane	500	230	8	3 ¹ / ₂
C5PB	Brake	5	127	2	51	Polyurethane	500	230	8 ¹ / ₄	3 ³ / ₄
C5PR	Rigid	5	127	2	51	Polyurethane	500	230	8	3 ¹ / ₂
C6P	Swivel	6	152	2	51	Polyurethane	500	230	4 ³ / ₄	2
C6PB	Brake	6	152	2	51	Polyurethane	500	230	4 ⁷ / ₈	2 ¹ / ₄
C6PR	Rigid	6	152	2	51	Polyurethane	500	230	3 ¹ / ₂	1 ¹ / ₂
C6PS/L-LH	Swivel/Lock	6	152	2	51	Polyurethane	500	230	5	2 ¹ / ₄
C8P	Swivel	8	203	2	51	Polyurethane	700	320	5 ³ / ₄	2 ¹ / ₂
C8PB	Brake	8	203	2	51	Polyurethane	700	320	5 ⁷ / ₈	2 ¹ / ₂
C8PR	Rigid	8	203	2	51	Polyurethane	700	320	4 ¹ / ₂	2
C8PS/L-LH	Swivel/Lock	8	203	2	51	Polyurethane	700	320	6	2 ³ / ₄
6P	Swivel	6	152	2	51	Polyurethane	700	320	5 ¹ / ₄	2 ¹ / ₂
BL6P*	Brake/Lock	6	152	2	51	Polyurethane	700	320	7 ¹ / ₄	3 ¹ / ₂
6PR	Rigid	6	152	2	51	Polyurethane	700	320	5	2
8P	Swivel	8	203	2	51	Polyurethane	700	320	6 ¹ / ₂	3
BL8P*	Brake/Lock	8	203	2	51	Polyurethane	700	320	9	4
8PR	Rigid	8	203	2	51	Polyurethane	700	320	6	2 ³ / ₄

*Sets include two casters plus locking mechanism.

Stainless Steel Cart-Washable Castors — Plate Type

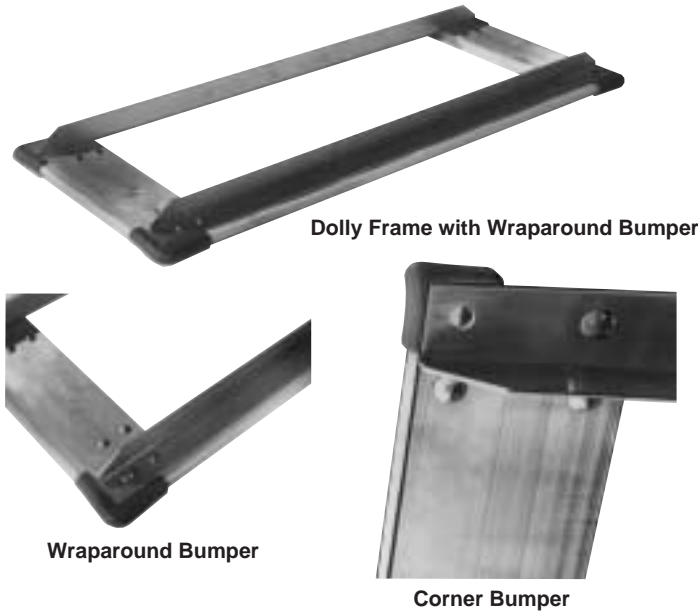
(Grease sealed with zerk fittings in swivel and axle or wheel)

Model No.	Type	Wheel Dia.		Face		Wheel Tread	Load Rating		Weight Ea.	
		(in.)	(mm)	(in.)	(mm)		(lbs.)	(kg)	(lbs.)	(kg)
B5PGSSS	Swivel	5	127	1 ¹ / ₄	32	Polyurethane	300	135	2 ¹ / ₈	1
B5PBGSSS	Brake	5	127	1 ¹ / ₄	32	Polyurethane	300	135	2 ¹ / ₄	1
B5PRGSSS	Rigid	5	127	1 ¹ / ₄	32	Polyurethane	300	135	2	1
C6PGSSS	Swivel	6	152	1 ¹ / ₂	38	Polyurethane	600	270	4 ³ / ₄	2
C6PBGSSS	Brake	6	152	1 ¹ / ₂	38	Polyurethane	600	270	4 ⁷ / ₈	2 ¹ / ₄
C6PRGSSS	Rigid	6	152	1 ¹ / ₂	38	Polyurethane	600	270	3 ¹ / ₂	1 ¹ / ₂
C6PS/LGSSS-LH	Swivel/Lock	6	152	1 ¹ / ₂	38	Polyurethane	600	270	5	2
C8PGSSS	Swivel	8	203	1 ¹ / ₂	38	Polyurethane	800	365	5 ³ / ₄	2 ¹ / ₂
C8PBGSSS	Brake	8	203	1 ¹ / ₂	38	Polyurethane	800	365	5 ⁷ / ₈	2 ¹ / ₂
C8PRGSSS	Rigid	8	203	1 ¹ / ₂	38	Polyurethane	800	365	4 ¹ / ₂	2
C8PS/LGSSS-LH	Swivel/Lock	8	203	1 ¹ / ₂	38	Polyurethane	800	365	6	2 ³ / ₄

NOTE 1: Brakes are foot-operated.

NOTE 2: 8" (203mm) castors should not be used on units less than 21" (533mm) wide.

NOTE 3: In the event that castors are to be used for cart wash applications or applications requiring towed carts or swivel locks, please contact InterMetro Industries Corporation or your InterMetro representative for special recommendations.



Dolly Frame with Wraparound Bumper

Wraparound Bumper

Corner Bumper

METRO® TRUCK DOLLY FRAMES

- **Versatile:** Fits footed posts and can be used to mount Super Erecta Shelf® shelving units. Available in sizes to match every shelf length and 18" (455mm), 21" (530mm) and 24" (610mm) widths. Accept dozens of caster types and combinations.
- **Strong:** Heavy-gauge, bolted construction. Available in aluminum, chrome-plated steel or stainless steel.
- **Corner Bumper:** Vinyl. Standard on all dolly frames unless otherwise specified.
- **Wraparound Bumper:** Metro's patented wraparound bumper system. Extruded vinyl inserts with aluminum reinforcement fit into frame and into specially molded corner bumpers. Recommended for most applications. To order, add suffix "W" after catalog numbers for dolly frame and casters.

- **Order by component:** If casters are to be ordered, list dolly frame and caster numbers separately. Example: 1-D1824NCB, 4-B5DN – This represents one aluminum 18" x 24" (455 x 610mm) dolly frame with four 5" (127mm) plate swivel casters.

Shelf Width (in.) (mm)	Shelf Length (in.) (mm)	Aluminum		Chrome		Stainless			
		Cat. No. with Corner Bumper	Cat. No. with Wraparound Bumper	Cat. No. with Corner Bumper	Cat. No. with Wraparound Bumper	Cat. No. with Corner Bumper	Cat. No. with Wraparound Bumper		
18	455	24	610	D1824NCB	D1824NP	D1824CCB	D1824CP	D1824SCB	D1824SP
18	455	30	760	D1830NCB	D1830NP	D1830CCB	D1830CP	D1830SCB	D1830SP
18	455	36	910	D1836NCB	D1836NP	D1836CCB	D1836CP	D1836SCB	D1836SP
18	455	42	1060	D1842NCB	D1842NP	D1842CCB	D1842CP	D1842SCB	S1842SP
18	455	48	1220	D1848NCB	D1848NP	D1848CCB	D1848CP	D1848SCB	D1848SP
18	455	60	1525	D1860NCB	D1860NP	D1860CCB	D1860CP	D1860SCB	D1860SP
18	455	72	1825	D1872NCB	D1872NP	D1872CCB	D1872CP	D1872SCB	D1872SP
21	530	24	610	D2124NCB	D2124NP	D2124CCB	D2124CP	D2124SCB	D2124SP
21	530	30	760	D2130NCB	D2130NP	D2130CCB	D2130CP	D2130SCB	D2130SP
21	530	36	910	D2136NCB	D2136NP	D2136CCB	D2136CP	D2136SCB	D2136SP
21	530	42	1060	D2142NCB	D2142NP	D2142CCB	D2142CP	D2142SCB	D2142SP
21	530	48	1220	D2148NCB	D2148NP	D2148CCB	D2148CP	D2148SCB	D2148SP
21	530	60	1525	D2160NCB	D2160NP	D2160CCB	D2160CP	D2160SCB	D2160SP
21	530	72	1825	D2172NCB	D2172NP	D2172CCB	D2172CP	D2172SCB	D2172SP
24	610	24	610	D2424NCB	D2424NP	D2424CCB	D2424CP	D2424SCB	D2424SP
24	610	30	760	D2430NCB	D2430NP	D2430CCB	D2430CP	D2430SCB	D2430SP
24	610	36	910	D2436NCB	D2436NP	D2436CCB	D2436CP	D2436SCB	D2436SP
24	610	42	1060	D2442NCB	D2442NP	D2442CCB	D2442CP	D2442SCB	D2442SP
24	610	48	1220	D2448NCB	D2448NP	D2448CCB	D2448CP	D2448SCB	D2448SP
24	610	60	1525	D2460NCB	D2460NP	D2460CCB	D2460CP	D2460SCB	D2460SP
24	610	72	1825	D2472NCB	D2472NP	D2472CCB	D2472CP	D2472SCB	D2472SP

Standard dolly frame for Super Erecta Shelf® shelving is aluminum. If heavy-duty use requires greater strength, chrome-plated steel frames are available; or for strength plus the ultimate in corrosion resistance, stainless steel frames are available.

Job _____

PITCHED ALUMINUM DUST COVER FOR DOLLIES



- **Versatile:** Fits on dolly and serves to shield lower shelf contents against dust or dirt particles which caster rotation could stir up from floor. Recommended for wire shelf trucks in many applications.

Dimensions

Shelf Width (in.) (mm)	Shelf Length (in.) (mm)	Dust Cover Cat. No.	Shelf Width (in.) (mm)	Shelf Length (in.) (mm)	Dust Cover Cat. No.	Shelf Width (in.) (mm.)	Shelf Length (in.) (mm)	Dust Cover Cat. No.
18 455	24 610	DCT1824N	21 530	24 610	DCT2124N	24 610	24 610	DCT2424N
18 455	30 760	DCT1830N	21 530	30 760	DCT2130N	24 610	30 760	DCT2430N
18 455	36 910	DCT1836N	21 530	36 910	DCT2136N	24 610	36 910	DCT2436N
18 455	42 1060	DCT1842N	21 530	42 1060	DCT2142N	24 610	42 1060	DCT2442N
18 455	48 1220	DCT1848N	21 530	48 1220	DCT2148N	24 610	48 1220	DCT2448N
18 455	60 1520	DCT1860N	21 530	60 1520	DCT2160N	24 610	60 1520	DCT2460N
18 455	72 1820	DCT1872N	21 530	72 1820	DCT2172N	24 610	72 1820	DCT2472N

Manufactured by:



InterMetro Industries Corporation
 North Washington Street, Wilkes-Barre, PA 18705
 Phone: 570-825-2741 • Fax: 570-825-2852
 For Product Information Call: 1-800-433-2232
 Visit Our Web Site: www.metro.com

L02-045B
 9/00
 Printed in U.S.A.

Information and specifications are subject to change
 without notice. Please confirm at time of order.