



Item # _____

Job _____



Super Erecta Shelf® Designer Shelving

SUPER ERECTA SHELF® DESIGNER SHELVING

Metro® Designer Shelving is available in three standard colors/finishes: Black, White, and Smoked Glass or Chrome Plated and Brite.™ Five designer colors are offered, but color selection is not limited to the colors shown. Almost any custom color is possible.

- **Versatile:** Available in a wide range of sizes and complemented by a large selection of accessories.
- **Aesthetic:** Visually identifiable Super Erecta Shelf design is always in style, always attractive.
- **Durable:** Rugged, unsurpassed construction stands up to years of heavy use.



Standard Colors/Finishes:



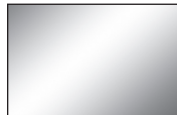
Black (BL)



White (W)



Smoked Glass (DSG)



Chrome Plated (C)



Brite (BR)

Designer Colors:



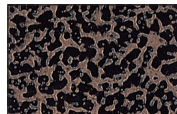
Black Matte (BM)



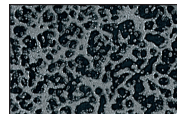
Flame (F)



Hunter Green (HG)



Copper Hammertone (CH)



Silver Hammertone (SH)



InterMetro Industries Corporation
North Washington Street
Wilkes-Barre, PA 18705
www.metro.com


EMERSON
Commercial & Residential Solutions

10.14



SUPER ERECTA SHELF®
DESIGNER SHELVING

Dimensions

Shelves

| STANDARD COLORS | | | DESIGNER COLORS | | | Width/Length (in.) (mm) | Approx. Pkd Wt. (lbs.) (kg) |
|--------------------------|-------------------|-------------------|-------------------|------------------------------|-------|----------------------------|--------------------------------|
| Cat. No. Smoked Glass | Cat. No. White | Cat. No. Black | Cat. No. Flame | Cat. No. Designer Colors* | | | |
| 1424N-DSG | 1424NW | 1424NBL | 1424NF | 1430N-D | 14x30 | 355x760 | 7 3.2 |
| 1436N-DSG | 1436NW | 1436NBL | 1436NF | 1436N-D | 14x36 | 355x914 | 8 3.6 |
| 1442N-DSG | 1442NW | 1442NBL | 1442NF | 1442N-D | 14x42 | 355x1066 | 9 1/2 4.3 |
| 1448N-DSG | 1448NW | 1448NBL | 1448NF | 1448N-D | 14x48 | 355x1219 | 10 1/2 4.7 |
| 1460N-DSG | 1460NW | 1460NBL | 1460NF | 1460N-D | 14x60 | 355x1524 | 14 6.4 |
| 1472N-DSG | 1472NW | 1472NBL | 1472NF | 1472N-D | 14x72 | 355x1825 | 17 7.7 |
| 1818N-DSG | 1818NW | 1818NBL | 1818NF | 1818N-D | 18x18 | 457x457 | 6 2.7 |
| 1824N-DSG | 1824NW | 1824NBL | 1824NF | 1824N-D | 18x24 | 457x610 | 7 3.2 |
| 1830N-DSG | 1830NW | 1830NBL | 1830NF | 1830N-D | 18x30 | 457x760 | 8 3.6 |
| 1836N-DSG | 1836NW | 1836NBL | 1836NF | 1836N-D | 18x36 | 457x914 | 9 1/2 4.3 |
| 1842N-DSG | 1842NW | 1842NBL | 1842NF | 1842N-D | 18x42 | 457x1066 | 11 5.0 |
| 1848N-DSG | 1848NW | 1848NBL | 1848NF | 1848N-D | 18x48 | 457x1219 | 12 5.4 |
| 1854N-DSG | 1854NW | 1854NBL | 1854NF | 1854N-D | 18x54 | 457x1370 | 14 1/2 6.5 |
| 1860N-DSG | 1860NW | 1860NBL | 1860NF | 1860N-D | 18x60 | 457x1524 | 17 7.7 |
| 1872N-DSG | 1872NW | 1872NBL | 1872NF | 1872N-D | 18x72 | 457x1825 | 20 9.1 |
| 2124N-DSG | 2124NW | 2124NBL | 2124NF | 2124N-D | 21x24 | 533x610 | 8 3.6 |
| 2130N-DSG | 2130NW | 2130NBL | 2130NF | 2130N-D | 21x30 | 533x760 | 9 4.1 |
| 2136N-DSG | 2136NW | 2136NBL | 2136NF | 2136N-D | 21x36 | 533x914 | 11 5.0 |
| 2142N-DSG | 2142NW | 2142NBL | 2142NF | 2142N-D | 21x42 | 533x1066 | 12 5.4 |
| 2148N-DSG | 2148NW | 2148NBL | 2148NF | 2148N-D | 21x48 | 533x1219 | 14 6.4 |
| 2154N-DSG | 2154NW | 2154NBL | 2154NF | 2154N-D | 21x54 | 533x1370 | 16 7.3 |
| 2160N-DSG | 2160NW | 2160NBL | 2160NF | 2160N-D | 21x60 | 533x1524 | 18 8.2 |
| 2172N-DSG | 2172NW | 2172NBL | 2172NF | 2172N-D | 21x72 | 533x1825 | 24 10.9 |
| 2424N-DSG | 2424NW | 2424NBL | 2424NF | 2424N-D | 24x24 | 610x610 | 9 4.1 |
| 2430N-DSG | 2430NW | 2430NBL | 2430NF | 2430N-D | 24x30 | 610x760 | 11 5.0 |
| 2436N-DSG | 2436NW | 2436NBL | 2436NF | 2436N-D | 24x36 | 610x914 | 13 5.9 |
| 2442N-DSG | 2442NW | 2442NBL | 2442NF | 2442N-D | 24x42 | 610x1066 | 15 6.8 |
| 2448N-DSG | 2448NW | 2448NBL | 2448NF | 2448N-D | 24x48 | 610x1219 | 16 7.3 |
| 2454N-DSG | 2454NW | 2454NBL | 2454NF | 2454N-D | 24x54 | 610x1370 | 19 8.5 |
| 2460N-DSG | 2460NW | 2460NBL | 2460NF | 2460N-D | 24x60 | 610x1524 | 21 9.5 |
| 2472N-DSG | 2472NW | 2472NBL | 2472NF | 2472N-D | 24x72 | 610x1825 | 26 11.8 |

NOTE: Shelving is not cart-washable, but can be wiped down with a mild detergent.
NOTE: The actual length of the shelves is 1/8" shorter than the nominal dimension shown. Actual width is 1/8" longer than the nominal dimension shown.
NOTE: Not NSF listed.
NOTE: Free standing 14" (355mm) wide shelving is not recommended for use with posts higher than 74". HRWBC wall brackets required for installations higher than 74".
NOTE: White shelving and accessories include white split sleeves and post caps. All others come with black.

When ordering designer colors, add the appropriate suffix from the following list after the "D" at the end of the catalog number:
 Hunter Green — HG Copper Hammertone — CH Silver Hammertone — SH Black Matte — BM

Posts

| Height* (in.) | Approx. Pkd. Wt. (lbs.) (kg) | STATIONARY | | | | | MOBILE (FOR STEM CASTERS) | | | | |
|------------------|---------------------------------|-------------------|-------------------|--------------------------|-------------------|------------------------------|---------------------------|-------------------|--------------------------|-------------------|------------------------------|
| | | Cat. No. Black | Cat. No. White | Cat. No. Smoked Glass | Cat. No. Flame | Cat. No. Designer Colors* | Cat. No. Black | Cat. No. White | Cat. No. Smoked Glass | Cat. No. Flame | Cat. No. Designer Colors* |
| 7 1/2 | 191 1/2 0.3 | 7PBL | 7PW | 7P-DSG | 7PF | 7P-D | — | — | — | — | — |
| 14 1/2 | 370 1 0.5 | 13PBL | 13PW | 13P-DSG | 13PF | 13P-D | — | — | — | — | — |
| 27 1/2 | 699 1 3/4 0.75 | 27PBL | 27PW | 27P-DSG | 27PF | 27P-D | 27UPBL | 27UPW | 27UP-DSG | 27UPF | 27UP-D |
| 34 1/2 | 875 2 0.9 | 33PBL | 33PW | 33P-DSG | 33PF | 33P-D | 33UPBL | 33UPW | 33UP-DSG | 33UPF | 33UP-D |
| 54 9/16 | 1385 3 1.4 | 54PBL | 54PW | 54P-DSG | 54PF | 54P-D | 54UPBL | 54UPW | 54UP-DSG | 54UPF | 54UP-D |
| 62 9/16 | 1590 3 1/2 1.6 | 63PBL | 63PW | 63P-DSG | 63PF | 63P-D | 63UPBL | 63UPW | 63UP-DSG | 63UPF | 63UP-D |
| 74 5/8 | 1895 4 1.8 | 74PBL | 74PW | 74P-DSG | 74PF | 74P-D | 74UPBL | 74UPW | 74UP-DSG | 74UPF | 74UP-D |
| 86 5/8 | 2200 5 2.3 | 86PBL | 86PW | 86P-DSG | 86PF | 86P-D | 86UPBL | 86UPW | 86UP-DSG | 86UPF | 86UP-D |

*Height includes leveling bolt and cap.
NOTE: Not NSF listed.

When ordering designer colors, add the appropriate suffix from the following list after the "D" at the end of the catalog number:
 Hunter Green — HG Copper Hammertone — CH Silver Hammertone — SH Black Matte — BM

All Metro Catalog Sheets are available on our website: www.metro.com



InterMetro Industries Corporation
 North Washington Street, Wilkes-Barre, PA 18705
 Phone: 570-825-2741
 Product Information. U.S. and Canada: 1.800.992.1776
 Outside U.S. and Canada: www.metro.com/contactus

L02-012
 Printed in U.S.A. Rev. 12/14

Information and specifications are subject to change without notice. Please confirm at time of order

Copyright © 2014 InterMetro Industries Corp.

