



Item # _____

We put space to work.

Job _____

Metro® Stem Casters - Super Erecta®

Metro Stem-Type Casters are designed to fit Super Erecta® Shelf posts to form shelf carts and other mobile units.

Plated Casters with High Modulus treads

- Non marking high modulus donut tread and polyolefin hub. Plated horns, stems, axles, and brakes (optional) are appropriate for dry environments and for medium duty applications. Ball bearing swivel and axle. NSF listed. Bumpers included. Brake style: pedal brake.

Wheel Diameter (in.) (mm)	Face (in.) (mm)		Load Rating (lbs.) (kg.)		Type	Wheel Tread	Temperature range (Continuous usage) (Fahrenheit) (Celsius)		Apprx. Pkd. Wt. (lbs.) (kg.)		Cat. No.
5 127	1-1/4	32	250	113	Stem/Swivel	High Modulus Donut	-40° - 180°	-40° - 82°	2-1/2	1.1	5MDA
5 127	1-1/4	32	250	113	Stem/Brake	High Modulus Donut	-40° - 180°	-40° - 82°	2-5/8	1.2	5MDBA
5 127	1-1/4	32	250	113	Stem/Rigid	High Modulus Donut	-40° - 180°	-40° - 82°	2-3/8	1.1	5MDRA

Note: Rigid connecting channel (stainless steel): Cat. No. 14RS, 18RS, 21RS, 24RS, 30RS, or 36RS.



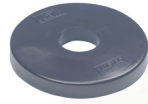
5MDA



5MDBA



5MDRA



Bumper included with these models.

Rigid stem casters are often ordered two per unit for improved tracking and handling. Rigid caster channels are provided with each two rigid stem casters at no charge.

Plated Casters with resilient rubber treads

- Solid resilient rubber material. Plated horns, stems, axles, and brakes (optional) are appropriate for dry environments and for medium duty applications. Ball bearing swivel. Select models are NSF listed. Bumpers included. Brake style: side brake.
- "LD" models have a plated hub cover.

Wheel Diameter (in.) (mm)	Face (in.) (mm)		Load Rating (lbs.) (kg.)		Type	Wheel Tread	Temperature range (Continuous usage) (Fahrenheit) (Celsius)		Apprx. Pkd. Wt. (lbs.) (kg.)		Cat. No.
4 102	15/16	24	125	56	Stem/Swivel	Resilient Donut	-30° - 160°	-34° - 71°	1-1/2	0.6	4LD
4 102	15/16	24	125	56	Stem/Brake	Resilient Donut	-30° - 160°	-34° - 71°	2	0.9	4LDB
5 127	15/16	24	125	56	Stem/Swivel	Resilient Donut	-30° - 160°	-34° - 71°	2	0.9	5LD
5 127	1-1/4	32	200	90	Stem/Swivel	Resilient, Flat	-30° - 160°	-34° - 71°	2-1/2	1.1	5M
5 127	1-1/4	32	200	90	Stem/Brake	Resilient, Flat	-30° - 160°	-34° - 71°	2-5/8	1.2	5MB
5 127	1-1/4	32	200	90	Stem/Rigid	Resilient, Flat	-30° - 160°	-34° - 71°	3-1/2	1.5	5MR

Note: Rigid connecting channel (stainless steel): Cat. No. 14RS, 18RS, 21RS, 24RS, 30RS, or 36RS.



4LD



5LD



5M



5MB



5MR



Bumper included with these models.

All Metro Catalog Sheets are available on our website: www.metro.com



InterMetro Industries Corporation
 North Washington Street, Wilkes-Barre, PA 18705
 Product Information. U.S. and Canada: 1.800.992.1776
 Outside U.S. and Canada: www.metro.com/contactus

L02-041
Printed in U.S.A. 8/19

Information and specifications are subject to change without notice. Please confirm at time of order.

Copyright © 2019 InterMetro Industries Corp.



Casters — Stem Type

11.20



Metro® Stem Casters

We put space to work.®

Plated Casters with Polyurethane Tread

- Chrome plated horns, stems, axles, and brakes (optional) are appropriate for dry environments and for medium duty applications. Non marking polyurethane flat tread and polyethylene hub. Ball bearing swivel and axle. NSF listed. Bumpers included. Brake style: side brake.

Wheel Diameter (in.) (mm)	Face (in.) (mm)		Load Rating (lbs.) (kg.)		Type	Wheel Tread	Temperature range (Continuous usage)		Apprx. Pkd. Wt. (lbs.) (kg.)		Cat. No.
							(Fahrenheit)	(Celsius)			
5	127	1-1/4 32	300	135	Stem/Swivel	Polyurethane, Flat	-30° - 180°	-34° - 82°	2-1/8	0.9	5MP
5	127	1-1/4 32	300	135	Stem/Brake	Polyurethane, Flat	-30° - 180°	-34° - 82°	2-1/4	1	5MPB
5	127	1-1/4 32	300	135	Stem/Rigid	Polyurethane, Flat	-30° - 180°	-34° - 82°	2	0.9	5MPR
6	152	1-1/2 38	400	182	Stem/Swivel	Polyurethane, Flat	-30° - 180°	-34° - 82°	2-1/4	1.1	6MP
6	152	1-1/2 38	400	182	Stem/Brake	Polyurethane, Flat	-30° - 180°	-34° - 82°	2-1/2	0.9	6MPB
6	152	1-1/2 38	400	182	Stem/Rigid	Polyurethane, Flat	-30° - 180°	-34° - 82°	2-1/4	1	6MPR

Note: Rigid connecting channel (stainless steel): Cat. No. 14RS, 18RS, 21RS, 24RS, 30RS, or 36RS.

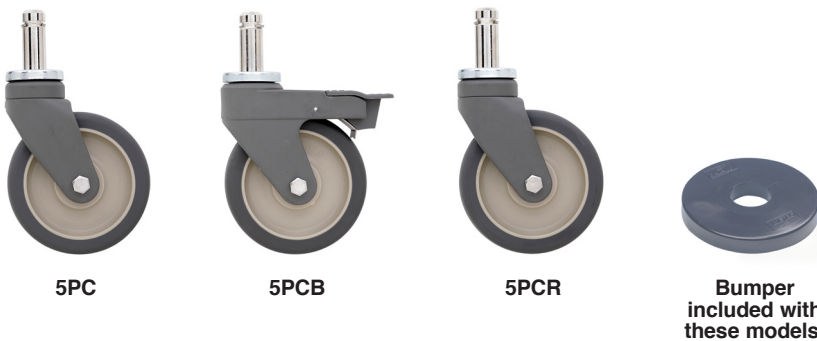


Polymer Horn Casters with Polyurethane Tread

- Polymer horn and stainless axle and bolt provide corrosion resistance and enhanced durability. Premium Delron bearings are maintenance free. Non marking polyurethane flat tread and polyethylene hub. For medium-duty applications. Brake style: pedal brake. Bumpers included. NSF listed.
- 5PCM and 5PCBM have antimicrobial product protection built-into the wheel tread.

Wheel Diameter (in.) (mm)	Face (in.) (mm)		Load Rating (lbs.) (kg.)		Type	Wheel Tread	Temperature range (Continuous usage)		Apprx. Pkd. Wt. (lbs.) (kg.)		Cat. No.	Antimicrobial Cat. No.
							(Fahrenheit)	(Celsius)				
5	127	1-1/4 32	300	135	Stem/Swivel	Polyurethane, Flat	-20° - 120°	-49° - 49°	2	0.9	5PC	5PCM
5	127	1-1/4 32	300	135	Stem/Brake	Polyurethane, Flat	-20° - 120°	-49° - 49°	2	0.9	5PCB	5PCBM
5	127	1-1/4 32	300	135	Stem/Rigid	Polyurethane, Flat	-20° - 120°	-49° - 49°	2	0.9	5PCR	-

Note: Rigid connecting channel (aluminum): Cat. No. P14RC, P18RC, P21RC, P24RC, P30RC, or P36RC.



Rigid stem casters are often ordered two per unit for improved tracking and handling. Rigid caster channels are provided with each two rigid stem casters at no charge.



Metro® Stem Casters

We put space to work.®

Stainless Steel, Cart-Washable Casters

- Designed with sealed stainless steel bearings to withstand high-pressure washings and zerk fittings for easy routine maintenance. For medium duty applications. Bumpers included. NSF listed.
- Non marking tread
- Brake style: Pedal brake.

Wheel Diameter (in.) (mm)	Face (in.) (mm)		Load Rating (lbs.) (kg.)		Type	Wheel Tread	Temperature range (Continuous usage) (Fahrenheit) (Celsius)		Apprx. Pkd. Wt. (lbs.) (kg.)		Cat. No.
5 127	1-1/4	32	250	113	Stem/Swivel	High Modulus Donut	-40° - 180°	-40° - 82°	2-1/2	1.1	5MDGSA
5 127	1-1/4	32	250	113	Stem/Brake	High Modulus Donut	-40° - 180°	-40° - 82°	2-5/8	1.2	5MDBGSA
5 127	1-1/4	32	250	113	Stem/Rigid	High Modulus Donut	-40° - 180°	-40° - 82°	2-3/8	1.1	5MDRGSA
5 152	1-1/2	38	300	135	Stem/Swivel	Polyurethane, Flat	-30° - 180°	-34° - 82°	2-1/8	0.9	5MPGSA
5 152	1-1/2	38	300	135	Stem/Brake	Polyurethane, Flat	-30° - 180°	-34° - 82°	2-1/4	1	5MPBGSA
5 152	1-1/2	38	300	135	Stem/Rigid	Polyurethane, Flat	-30° - 180°	-34° - 82°	2	0.9	5MPRGSA

Note: Rigid connecting channel (stainless steel): Cat. No. 14RS, 18RS, 21RS, 24RS, 30RS, or 36RS.

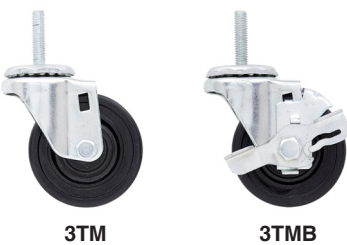


Rigid stem casters are often ordered two per unit for improved tracking and handling. Rigid caster channels are provided with each two rigid stem casters at no charge.

Low Profile 3" Threaded Stem Casters

- Threaded stem installs into the base of a standard stationary post.
- Resilient rubber tread. Bumpers not included.

Wheel Diameter (in.) (mm)	Face (in.) (mm)		Load Rating (lbs.) (kg.)		Type	Wheel Tread	Temperature range (Continuous usage) (Fahrenheit) (Celsius)		Apprx. Pkd. Wt. (lbs.) (kg.)		Cat. No.
3 76	15/16	24	100	45	Stem/Swivel	Resilient Rubber	-30° - 130°	-34° - 71°	1.0	0.45	3TM
3 76	15/16	24	100	45	Stem/Brake	Resilient Rubber	-30° - 130°	-34° - 71°	1.1	0.50	3TMB





We put space to work.

Metro® Stem Casters

- **Swivel and Swivel/Brake casters** rotate a full 360 degrees for easy maneuvering.
- **Brakes:** Wheel brakes are foot operated.
- **Bumpers:** Non Phtalate vinyl material is strong yet flexible to protect walls from damage. Each caster, except where noted, includes a 3-1/2" (89mm) diameter bumper. Optional 5" (127mm) diameter bumpers are available.
- **Weight Load Capacity** of a cart (evenly distributed): Caster Load Rating x 3.
- **Stem casters** in spec sheet 11.20 are for use with 1" (25mm) diameter posts. Stem casters may be fit to larger 1-5/8" diameter posts used on Metro Work Tables and HD Super Shelving by using an adapter set.
Cat. No. 9974HDP-4, bag of 4 adapters. Note: Adapters are not for use with threaded stem 3TM and 3TMB models.

Caster Wheel Material Guide

Caster Tread	Grease/Oil Resistance	Floor Protection	Load Rating	Key Advantage
Resilient Rubber	Low	High	200 lbs. (90kg)	Basic mobility.
High Modulus Rubber	High	High	250 lbs. (113kg)	Quieter than resilient rubber and polyurethane.
Polyurethane	High	High	300 lbs. (135kg)	Easiest to move heavy loads.
Hi-Temp Phenolic	High	Medium	300 lbs. (135kg)	Suitable tread for Autoclave processes.
Hi-Temp Nylon	High	Medium	300 lbs. (135kg)	Suitable tread for Autoclave processes.

Replacement Bumpers

Non Phtalate Vinyl

Diameter		Height		Cat. No.
(in.)	(mm)	(in.)	(mm)	
3-1/2	89	3/4	19	9992DB
5-1/2	140	13/16	21	9992N



Donut Bumper

Rigid Caster Channels

- Typically used opposite two swivel style casters to create carts that are easy to steer over long distances.
Note: A type 304 stainless rigid caster channel is included at no charge with each two rigid plated or SS casters. An aluminum rigid channel is included with each two polymer horn rigid casters (model 5PCR).

For shelf depth		Cat. No.	(For use with 5PCR)	
(in.)	(mm)		Cat. No.	
14"	355	14RS	P14RC	
18"	457	18RS	P18RC	
21"	530	21RS	P21RC	
24"	610	24RS	P24RC	
30"	760	30RS	P30RC	
36"	910	36RS	P36RC	



Rigid Caster Channel

Swivel Casters



24RS



P24RC

All Metro Catalog Sheets are available on our website www.metro.com.

an Ali Group Company



The Spirit of Excellence

