



Item # _____

We put space to work.

Job _____

Super Erecta Solid Shelving Accessories

Shelf Ledges - 4" (101mm) tall

- Sturdy ledges contain items on shelves.
- Chrome ledges include plated spring mounting clips.
Replacement plated spring mounting clips: Cat. No. 9184Z, bag of 6.
- Stainless ledges include rust proof polymer mounting clips.
Replacement polymer clips: Cat. No. 9184P, bag of 6.

Fits Shelf Length (in.)	Fits Shelf Length (mm)	Approx. Pkd. Wt. Per 6 Pieces		Cat. No. Plated	Cat. No. Stainless
		(lbs.)	(kg)		
14	355	7½	3.4	L14WC	L14WS
18	457	9	4.1	L18WC	L18WS
21	530	10½	4.7	L21WC	L21WS
24	610	12	5.4	L24WC	L24WS
30	760	13½	6.0	L30WC	L30WS
36	914	16½	7.4	L36WC	L36WS
42	1066	19½	8.7	L42WC	L42WS
48	1219	22½	10.1	L48WC	L48WS
60	1524	30	13.5	L60WC	L60WS

Note: ledges are not stackable.



Metal Clip
Front View
6 Per Bag



Polymer Clip
Side & Front View
6 Per Bag



Chrome ledges with plated steel clips



Stainless ledge with polymer clip

Rods and Tabs (Mounting Clips)

- Rods can enclosure the sides and back of a solid shelving unit.
- Chrome plated wire rod. Plated spring steel mounting clips.
- Four tabs (mounting clips) are included with each rod.

Min. Post Height (in.)	Rod Length		Approx. Pkd. Wt.		Cat. No. Plated
	(in.)	(mm)	(lbs.)	(kg)	
54	52	1320	1	0.5	R52FC
63	60	1524	1	0.5	R60FC
74	72	1830	1¼	0.6	R72FC
86	84	2135	1½	0.7	R84FC



Additional plated mounting spring clips: Cat. No. 9184Z, bag of 6.

8" (203mm) tall divider

- Create slots on a solid shelf for better organization.

Length (in.)	Length (mm)	Approx. Pkd. Wt. Per 6 Pieces		Cat. No. Plated	Cat. No. Stainless
		(lbs.)	(kg)		
14	355	12	5.4	DD14FC	
18	457	13½	6.0	DD18FC	DD18FS
21	530	15	6.8	DD21FC	
24	610	16½	7.4	DD24FC	DD24FS



All Metro Catalog Sheets are available on our website: www.metro.com



InterMetro Industries Corporation
North Washington Street, Wilkes-Barre, PA 18705
Product Information. U.S. and Canada: 1.800.992.1776
Outside U.S. and Canada: www.metro.com/contactus

L02-015
Printed in U.S.A.

Information and specifications are subject to change without notice. Please confirm at time of order.

Copyright © 2020 InterMetro Industries Corp.



Super Erecta Solid Shelving Accessories

10.25

Job _____



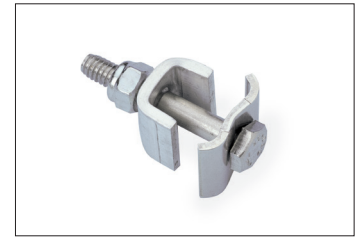
We put space to work.

Super Erecta Solid Shelving Accessories

Solid Shelf Joining Clip

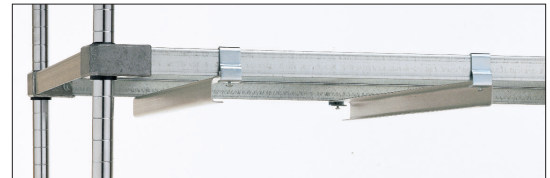
- Used to add on a solid shelving unit to another using only two posts.
- The joining clips take the place of two posts to create end to-end and right angle configurations.
- Two clips are required per shelf.
- To use these clips the base unit with four posts and the add-on unit with two posts must both have all solid shelves.
- Zinc plated.

Cat No. 9998Z.



Adjustable Undershelf Slides

- An undershelf drawer can be created by combining a tote box with these slides.
- Consists of a pair of slides and zinc plated mounting hardware
- Slide Channel: Aluminum



Item	Approx. Pkd. Wt.		Cat. No. Solid
	(lbs.)	(kg)	
For 18" (457mm) wide shelf	1	0.4	US18FA
For 21" (530mm) wide shelf	1	0.4	US21FA
For 24" (610mm) wide shelf	1	0.4	US24FA

Special Posts for Counter Units

- Posts area combined with rear standard Super Erecta posts to create a workstation with all solid shelves.
- Upper front posts include bulleted adjustable feet.
- Lower front posts include standard leveler bolts.

	Unit Height		Post Height*		Approx. Pkd. Wt.		Cat. No. Plated	Cat. No. Stainless
	(in.)	(mm)	(in.)	(mm)	(lbs.)	(kg)		
Upper Front Posts	63	1600	28 ⁵ / ₈	727	1 ¹ / ₂	0.7	27PF	27PFS
	74	1880	40 ⁵ / ₈	1032	2	0.9	39PF	39PFS
Lower Front Posts	All Heights		34 ¹ / ₂	877	2	0.9	33PM	33PMS

*Height includes leveling bolt and cap.



an Ali Group Company



The Spirit of Excellence