

KA-64/86/100 Series

Hot Water Sanitizing Multiple-Tank Rack-Conveyor Dishwashers



Special Features:

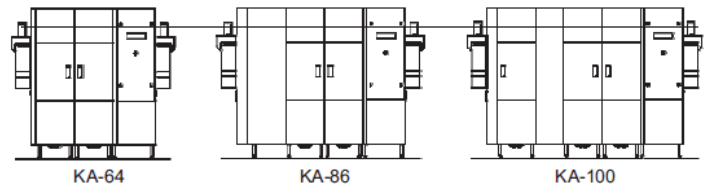
- **Low water consumption** of 86 gallons (325.5 liters) per hour, 0.24 gallons (0.92 liters) per rack.
- **Highest capacity will run up to 355 racks/hour.**
- **Glass touch screen control panel** for fully automatic operation and advanced service diagnostics. Messages are displayed in plain text, with a selection of multiple languages including English, Spanish and French.
- **Built-in “smart” booster heater** ensures correct sanitizing temperature of 180°/82°C (incoming water temperature of 110°-140°F/43-60°C).
- **Blue color coding** of components to be touched during daily cleaning makes cleaning intuitive.
- **Modular construction** enables total customization and reduces lead times. Ships as a single unit.

Standard Features:

- 3 drive speeds: Wash 355, 295 or 236 racks/hour.
- 304-series stainless steel construction.
- Uniquely-designed center-drive pawl system eliminates water spray blockage from below the rack, while providing reliable operation.
- Double-wall insulated construction on front, top and back to improve operator safety, conserve heating energy, and reduce noise and heat loss into the dishroom.
- Standard vent cowls with collars.
- Sealed, hinged access door(s) are field-reversible by an Authorized Service Agent.
- Optimally-positioned wash arms in easily-removed assemblies. Arms and assemblies are stainless steel for easy cleaning. Nozzles are slotted and concave to minimize clogging.
- Powerful 3hp (2.2 kW) wash pump is 50% more efficient than the industry standard, for outstanding cleaning ability. Pump motor is vertically-mounted to be self-draining and easily removed for servicing.
- Detergent and rinse aid access ports.
- Single-point drain connection.
- Low-level heater protection.
- Potential-free contacts for external vent fan control.



European model shown



Options:

- **Waste Air Heat Recovery System (WAHRS):** Reclaims waste heat generated by the machine and uses it as free energy to preheat incoming rinse water. Reduces energy consumption; allows hot-water sanitization from a cold-water supply.
- **Blower dryer** improves drying of dishes, glassware, crockery and silverware.
- **90° mechanical unloader/blower dryer module.**
- **90° mechanical loader and unloader (unhooded).**
- **Water hammer arrestor.**

Accessories:

- Table limit switch.
- Drain water tempering kit.
- Open-ended sheet pan rack.
- Flanged feet.

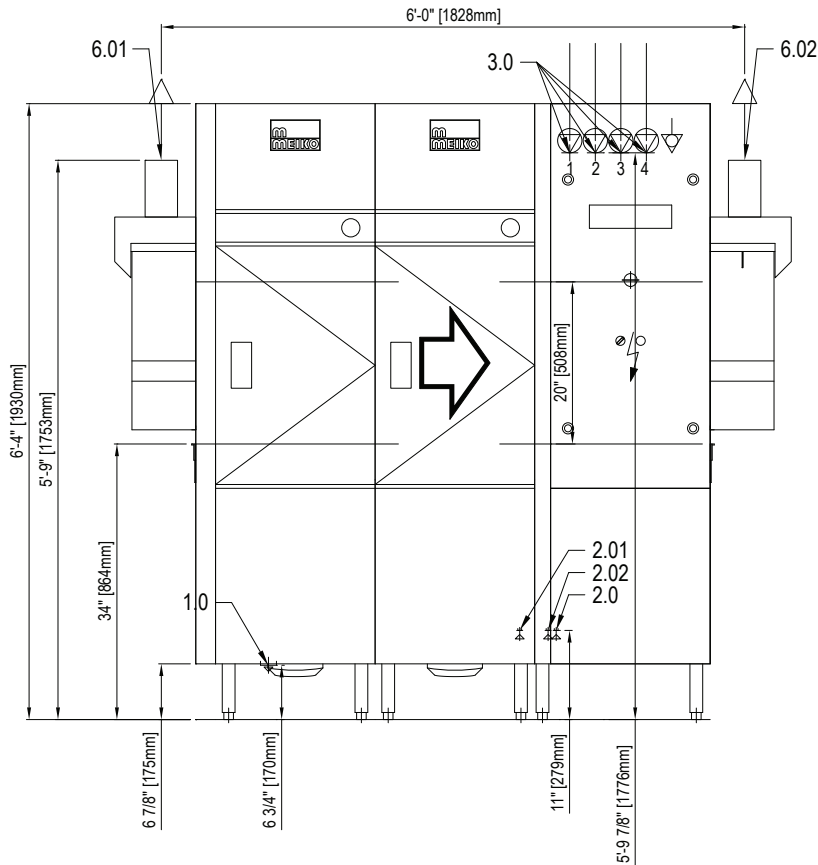
Models:

- **KA-64:** 64" (1626 mm) compartment with wash and final rinse zones. Table-to-table length 64" (1626 mm).
- **KA-86:** Adds 22" (559 mm) prewash section to KA-64 configuration. Table-to-table length 86" (2184 mm).
- **KA-100:** Adds 36" (800 mm) prewash section to KA-64 configuration. Table-to-table length 100" (2540 mm).

This dishwasher is compliant with the Reduction of Lead in Drinking Water Act (2011) amendment to the Safe Drinking Water Act (SDWA).



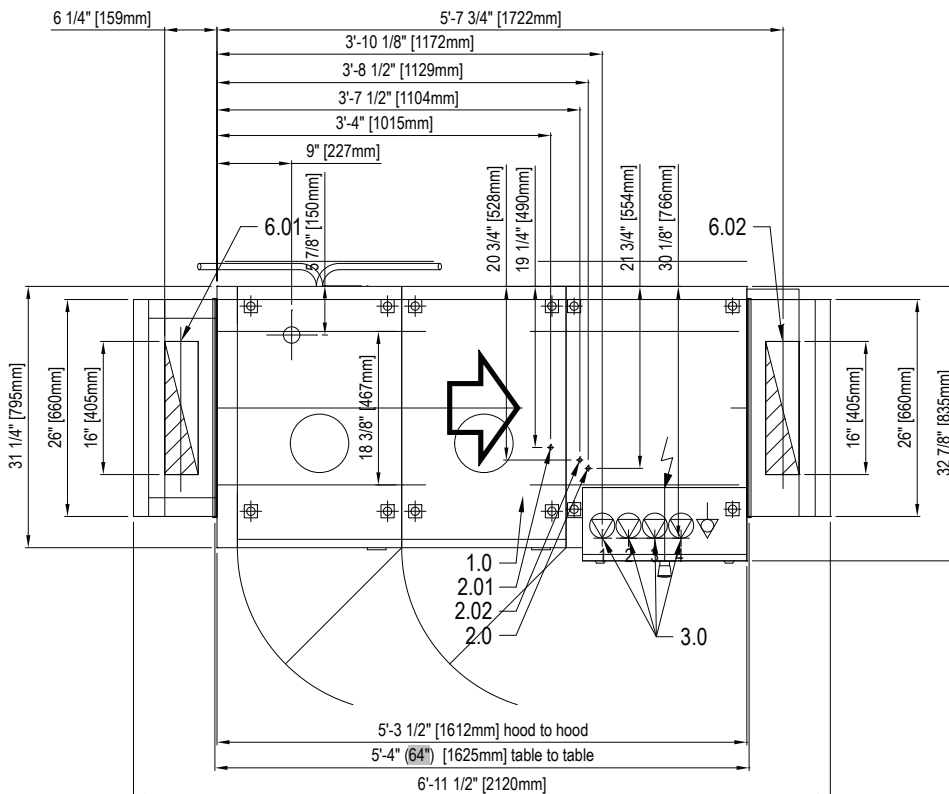
KA-64, left to right - electric heat



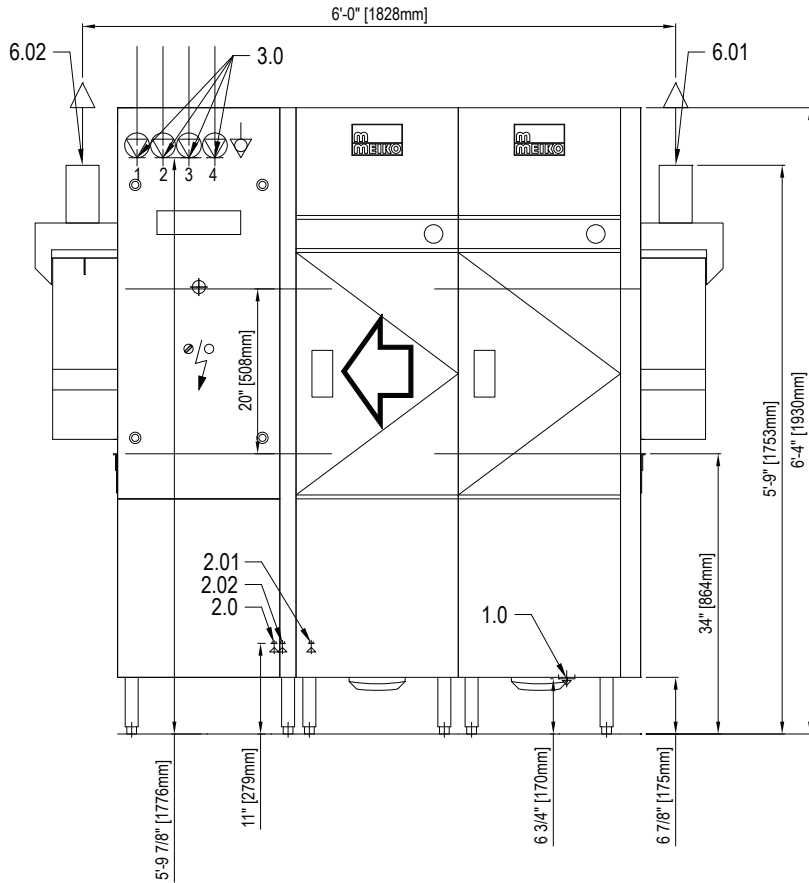
Utility Connections: Refer to pages 6-7 for details

- 1.0 Drain
- 2.0 Warm water connection (without WAHRS)
- 2.01 Warm water connection (with WAHRS)
- 2.02 Cold water connection (without WAHRS)
- 3.0 Electrical connections
- 6.01 Vent connection
- 6.02 Vent connection

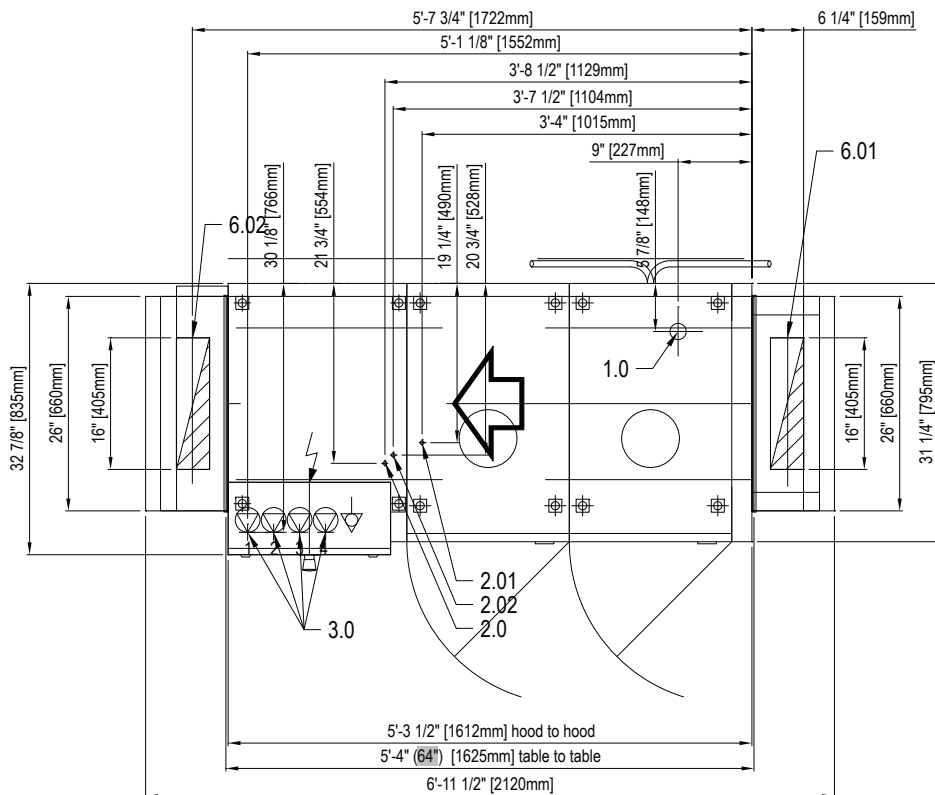
Note: Drain locations may vary



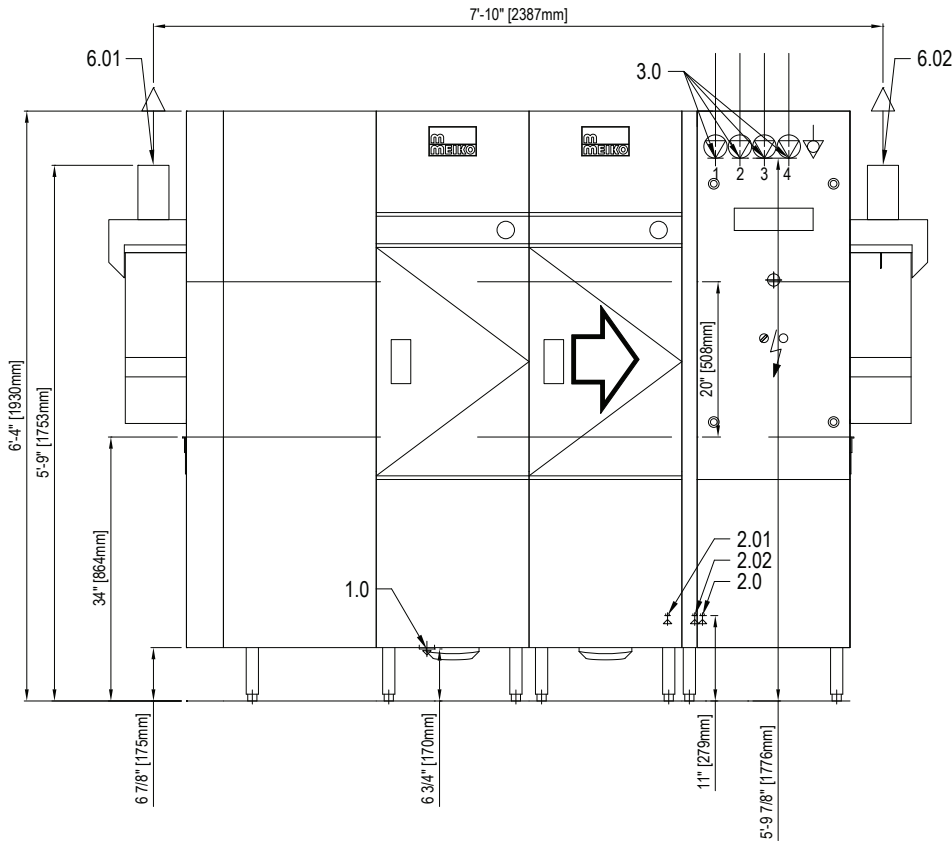
KA-64, right to left - electric heat



- Utility Connections:**
Refer to pages 6-7 for details
- 1.0 Drain
 - 2.0 Warm water connection (without WAHRS)
 - 2.01 Warm water connection (with WAHRS)
 - 2.02 Cold water connection (without WAHRS)
 - 3.0 Electrical connections
 - 6.01 Vent connection
 - 6.02 Vent connection
- Note:** Drain locations may vary



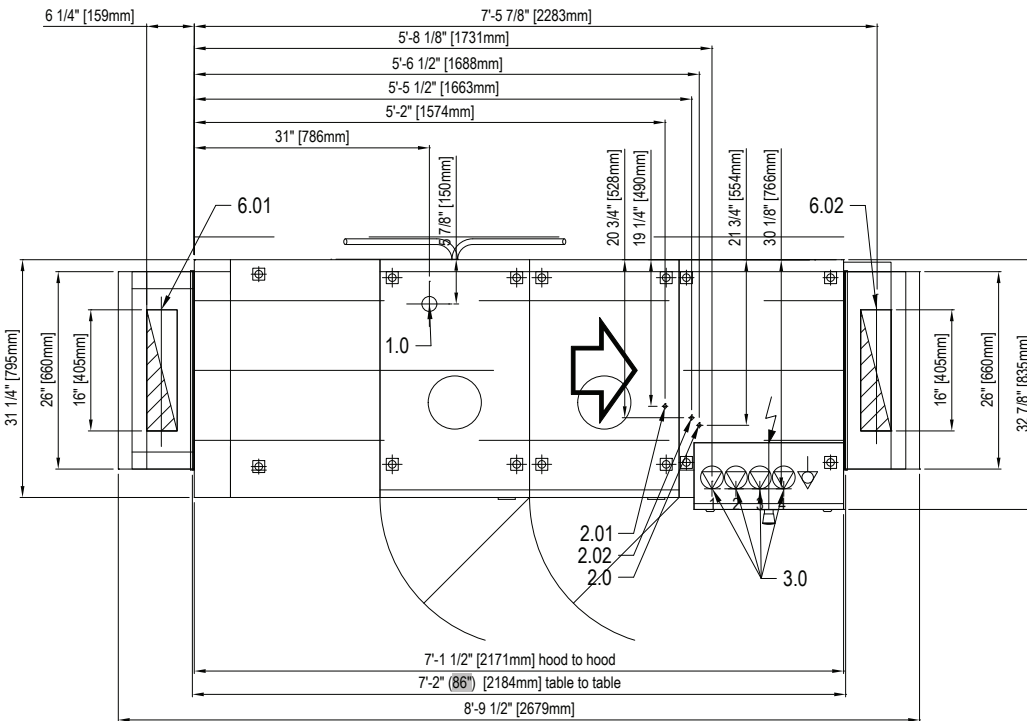
KA-86, left to right - electric heat



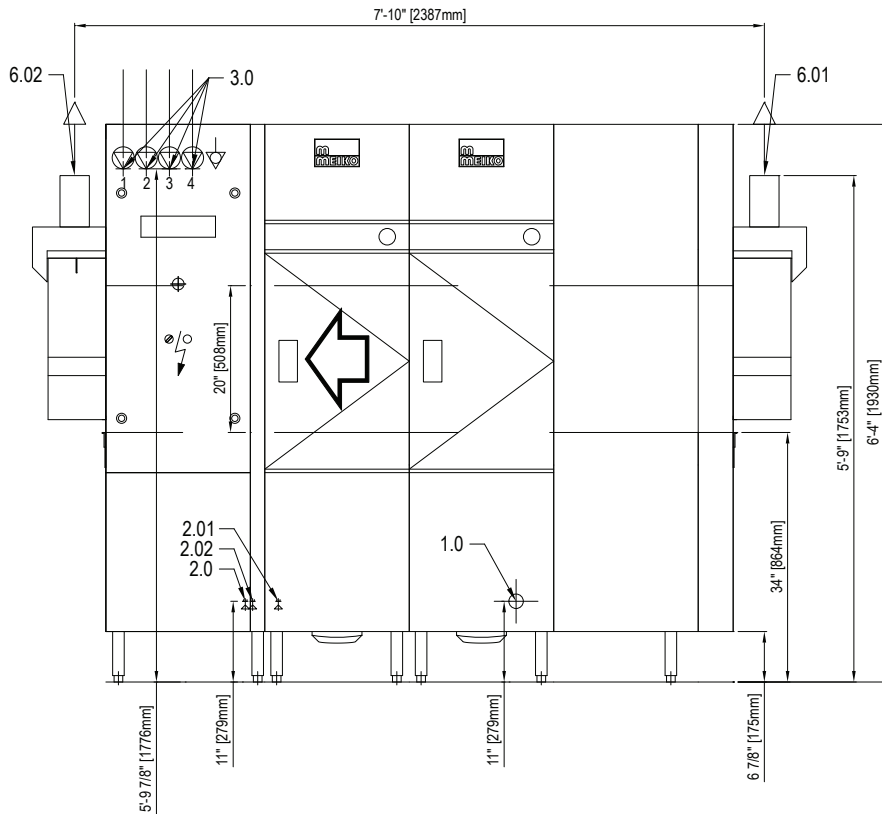
Utility Connections:
Refer to pages 6-7 for details

1.0	Drain
2.0	Warm water connection (without WAHRS)
2.01	Warm water connection (with WAHRS)
2.02	Cold water connection (without WAHRS)
3.0	Electrical connections
6.01	Vent connection
6.02	Vent connection

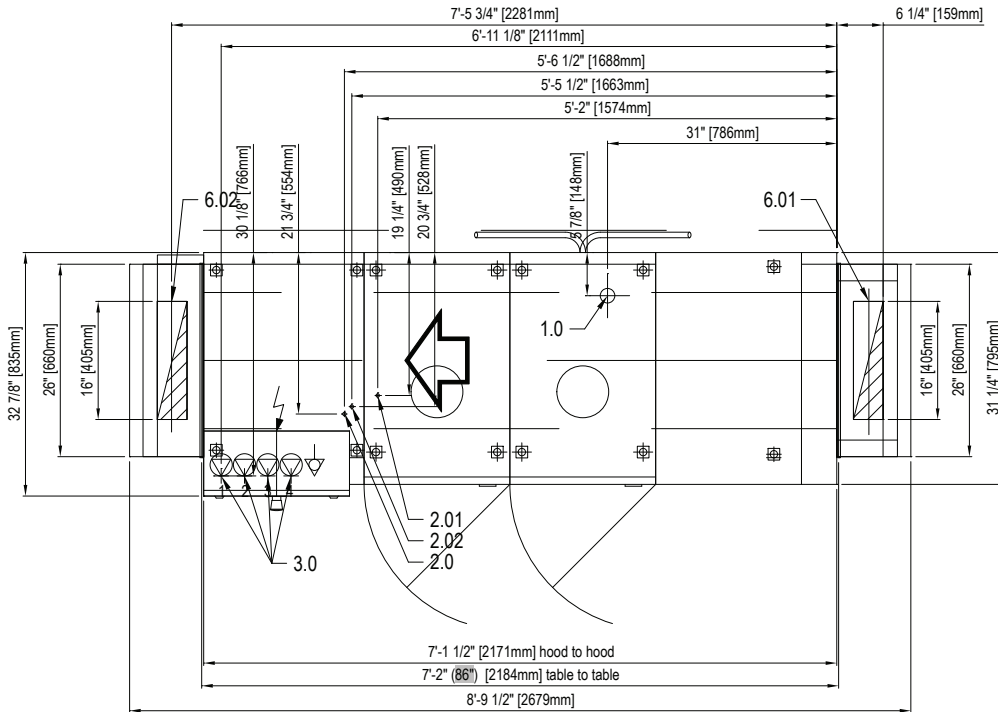
Note: Drain locations may vary



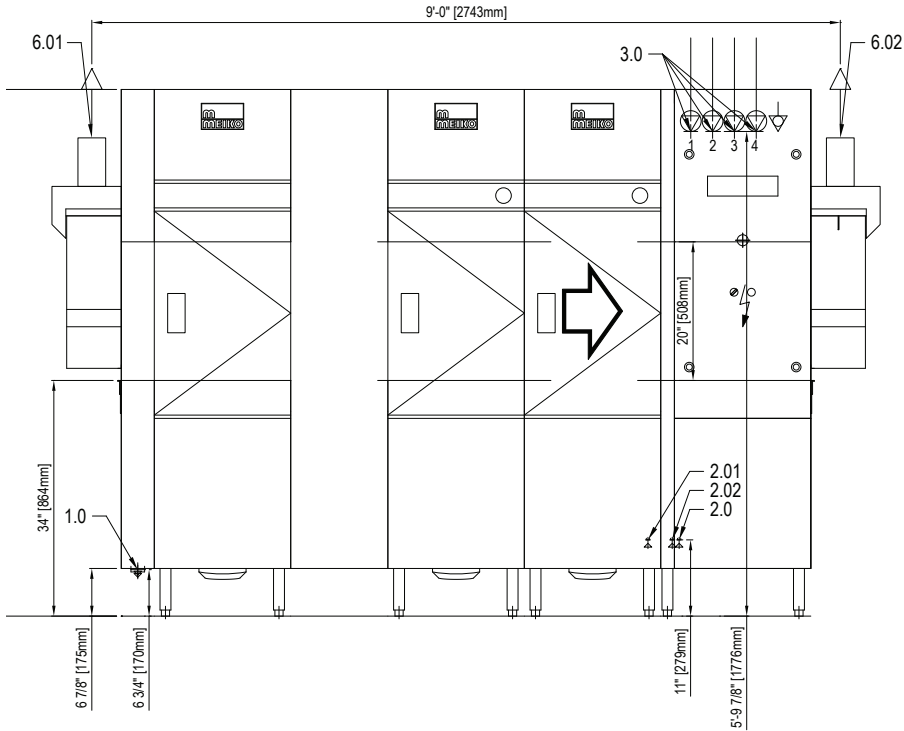
KA-86, right to left - electric heat



- Utility Connections:**
Refer to pages 6-7 for details
- 1.0 Drain
 - 2.0 Warm water connection (without WAHRS)
 - 2.01 Warm water connection (with WAHRS)
 - 2.02 Cold water connection (without WAHRS)
 - 3.0 Electrical connections
 - 6.01 Vent connection
 - 6.02 Vent connection
- Note:** Drain locations may vary



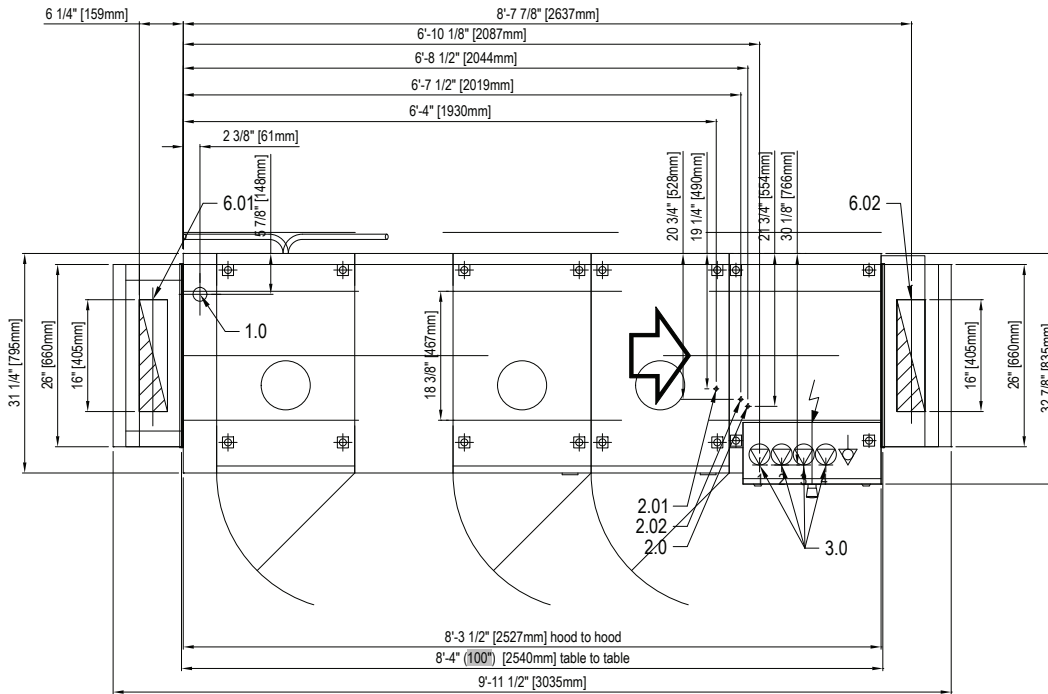
KA-100, left to right - electric heat



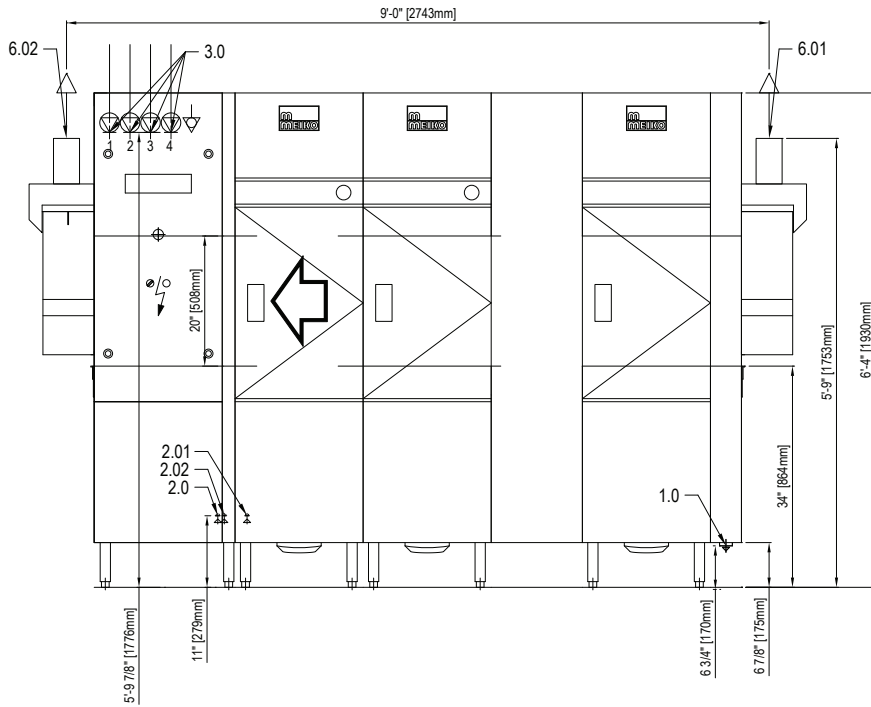
Utility Connections: Refer to pages 6-7 for details

- 1.0 Drain
- 2.0 Warm water connection (without WAHRS)
- 2.01 Warm water connection (with WAHRS)
- 2.02 Cold water connection (without WAHRS)
- 3.0 Electrical connections
- 6.01 Vent connection
- 6.02 Vent connection

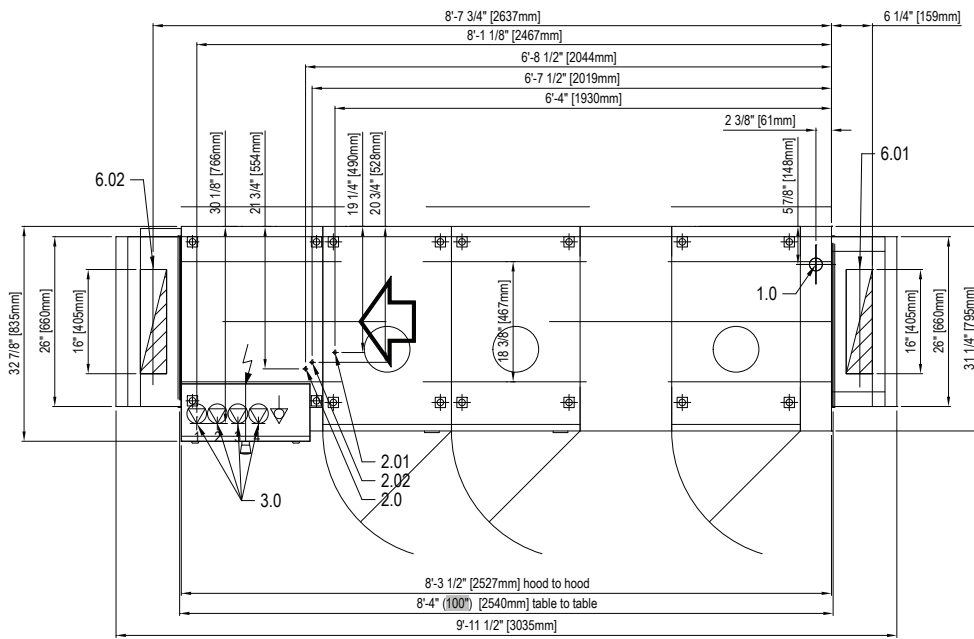
Note: Drain locations may vary



KA-100, right to left - electric heat



- Utility Connections:**
Refer to pages 6-7 for details
- 1.0 Drain
 - 2.0 Warm water connection (without WAHRS)
 - 2.01 Warm water connection (with WAHRS)
 - 2.02 Cold water connection (without WAHRS)
 - 3.0 Electrical connections
 - 6.01 Vent connection
 - 6.02 Vent connection
- Note:** Drain locations may vary



KA-64/86/100 Series Utility Connections

1.0 Drain

- Vertical, gravity-fed drain outlet (HDPE piping). 2" OD or 1½" pipe via no-hub required for connection.
- Connection pipe work and P-trap to be provided by others (HDPE piping).
- Additional piping to drain (if required) to be provided by others.
- Connection is 1'-1" (330 mm) AFF.

2.0 Warm water connection (fill and rinse); machines without WAHRS option:

- ¾" NPT pipe connection.
- Temperature: 110° - 140°F (43° - 63°C).
- Initial fill:
 - K64** = 21.1 gallons (80 liters)
 - K86** = 21.1 gallons (80 liters)
 - K100** = 42.2 gallons (160 liters)
- Consumption = 71 gallons (268.8 liters) per hour.
- Recommended hardness = 1-3 grains/gallon.
- Connection = 11" (279 mm) AFF.

2.01 Warm water connection (fill and rinse); machines with WAHRS option:

- ½" NPT pipe connection.
- Temperature: 110° - 140°F (43° - 60°C).
- Initial fill:
 - K64** = 21.1 gallons (80 liters)
 - K86** = 21.1 gallons (80 liters)
 - K100** = 42.2 gallons (160 liters)
- Recommended hardness = 1-3 grains/gallon.
- Connection = 11" (279 mm) AFF.

2.02 Cold water connection (final rinse); machines with WAHRS option:

- ½" NPT pipe connection.
- Temperature as cold as available: 53°- 68°F (12°- 20°C) recommended.
- Consumption = 71 gallons (268.8 liters) per hour.
- Recommended hardness = 1-3 grains/gallon.
- Connection = 11" (279 mm) AFF.



3.0 Electrical connections

- Refer to **M-iPlan** for all electrical utility values.



Equipotential ground lug



6.01 Vent connections

- Refer to **Detail View: Vent** for suggested connection.
Note: Applies only to dryer/unloader module.



6.02 Waste Air Connection

- The waste air connection must be corrosion-resistant and frost-free. In particular, provisions must be made to prevent air temperatures of 32°F (0°C) or colder from reaching the machine at any time. A provision for draining moisture from the waste air pipe (condensate return) is strongly recommended.
- Relative humidity: approximately 98%.
- Machine exhaust (per vent connection): recommended 88 CFM (150m³/hr); 176 CFM (300m³/hr) total.

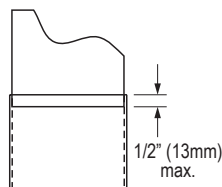
Recommended Vent Connection

Machines that are not placed underneath a ventilation hood require "pant leg" ventilation ducts. To determine the dimensions of the duct, first determine how they will be installed:

Duct sleeved inside collar (recommended)

Outside dimensions of the duct should be ¾" W x 15¼" D (95 x 400 mm)

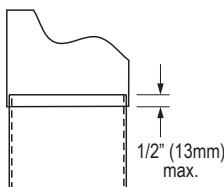
¾" W x 15¼" D (95 x 400 mm)
Outside dimensions



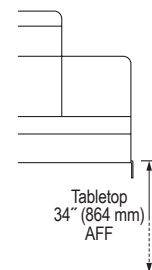
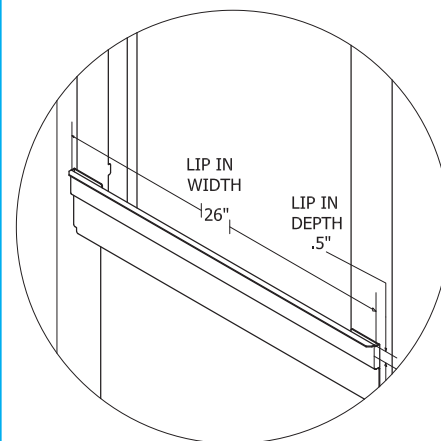
Duct sleeved outside collar

Inside dimensions of the duct should be 4" W x 16" D (102 x 406 mm)

4" W x 16" D (102 x 406 mm)
inside dimensions



Recommended Tabling Construction



Use silicone sealer between the table lip and the machine to prevent leakage

KA-64/86/100 Series Technical Specifications

Performance

Maximum rack capacity per hour	355/295/236
Water consumption (<i>maximum</i>)	86 gals (325.5 liters)/h
Water consumption (<i>per rack</i>)	0.24 gal (0.92 liters)/rack

Venting data

Load end:	88 CFM/150m ³ /h
Unload end:	88 CFM/150m ³ /h
Total:	176 CFM / 300m ³ /h
Relative humidity (<i>approx.</i>):	98%

Dimensions

Length, KA-64, table-to-table	64" (1626 mm)
Length, KA-86, table-to-table	86" (2184 mm)
Length, KA-100, table-to-table	100" (2540 mm)
Length, blower dryer (<i>option</i>)	+ 23 ⁵ / ₈ " (600 mm)
Height	76 ¹ / ₈ " (1934 mm)
Depth	31 ¹ / ₄ " (795 mm)
Clearance height inside wash chamber	20" (508 mm)

Component data

Wash pump motor	3.0 hp (2.2 kW)
Prewash pump motor (<i>KA-80 only</i>)	3.0 hp (2.2 kW)
Conveyor drive motor	0.13 hp (0.12 kW)
Vent motor (<i>WAHRS option only</i>)	0.17 hp (0.13 kW)
Blower dryer motor (<i>blower dryer option only</i>)	0.67 hp (0.48 kW)

Water Connection data

Water hardness	1-3 grains per gallon
Temperature, common water connection (<i>standard</i>)	110°-140°F (43°-60°C)
Temperature, fill connection (<i>with optional WAHRS</i>)	110°-140°F (43°-60°C)
Temperature, rinse connection (<i>with optional WAHRS</i>)	Cold as available , 53°-68°F (12°-20°C) recommended
Initial fill, KA-64/KA-86	42.2 gallons (160 liters)
Initial fill, KA-100	63.3 gallons (240 liters)

Note: All specifications are subject to change without notice based on MEIKO's dedicated product improvement program.