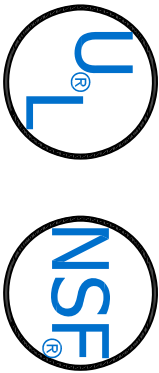


WALK-IN SPECIFICATIONS

SIZE: 5'-10" X 7'-9" X 7'-6 1/4"



PANELS:

FRAMED IN PLACE URETHANE FOAM 4"

EXTERIOR FINISH:

WALL: GALVALUME - EMBOSSED 26 GA
TOP: GALVALUME - EMBOSSED 26 GA

INTERIOR FINISH:

WALL: GALVALUME - EMBOSSED 26 GA
TOP: GALVALUME - EMBOSSED 26 GA

FLOOR TYPE:

COOLER: 100 SMOOTH ALUMINUM

DOORS:

46x82.25DS 34x78 DR STD CLR
FRAME=GL/GL
CPLUG=GL/GL
115-60-1/0.9 AMPS

ACCESSORIES:

(1) KICKPLATE, .063 DIA. TREAD INT DR 36"H
(1) KICKPLATE, .063 DIA. TREAD EXT DR 36"H

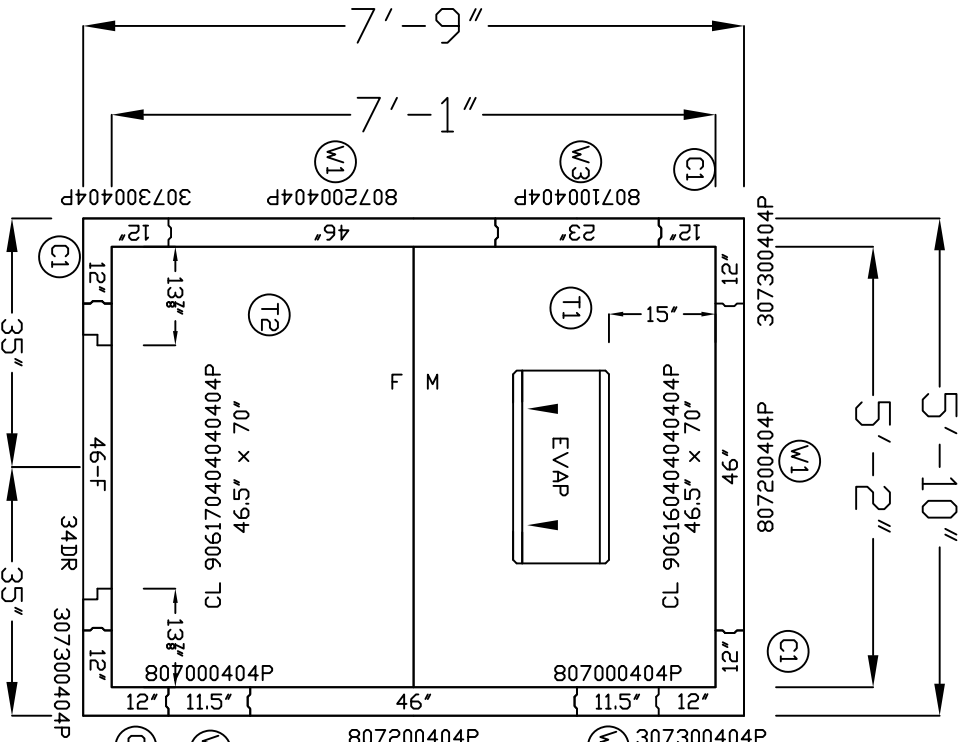
REFRIG: PRE-CHARGED

R404A REFRIGERATION PACKAGE
PC049MDP 1/2HP R404A 208/230-60-1 5.7 AMPS
L=33", W=25.5", H=19.25", LBS=146
AM16-052 115/60/1 0.80 AMPS
L=27.125", W=15.5", H=16.75", LBS=50

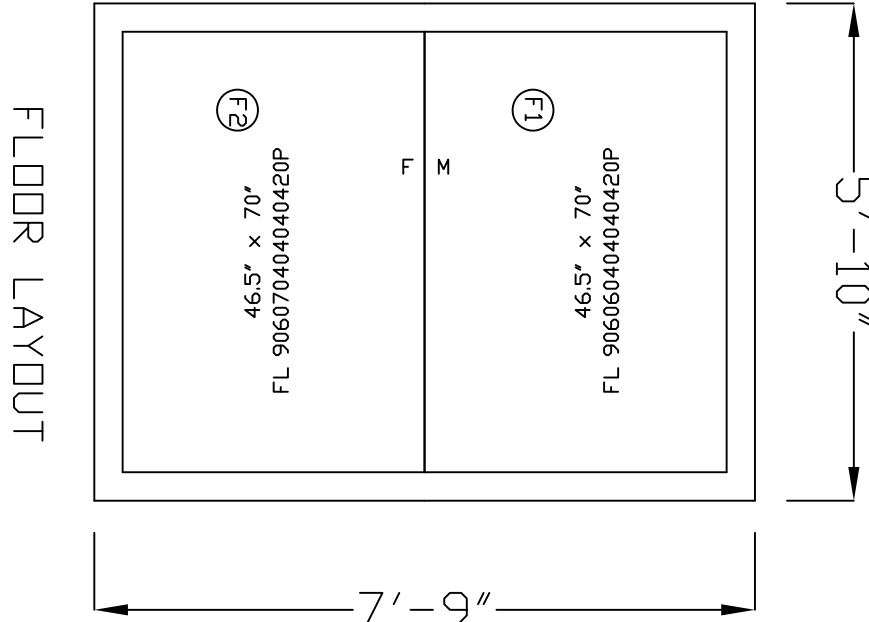
R448A REFRIGERATION PACKAGE
PC048MDP 1/2HP R448A 208-230-60-1 5.7 AMPS
L=28.25", W=37.875", H=18.75", LBS=152
AM16-052 115/60/1 0.80 AMPS
L=27.125", W=15.5", H=16.75", LBS=50

OPTIONAL ACCESSORIES:

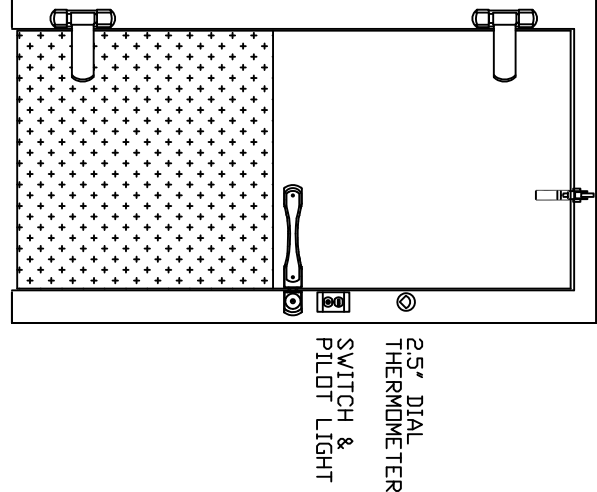
SHIP LOOSE ACCESSORIES AVAILABLE BY PART NUMBER



COOLER
O.D. 7'-6 1/4"
I.D. 6'-10 5/8"

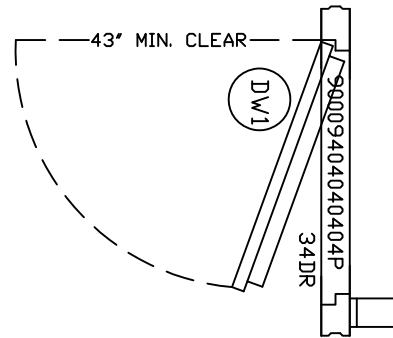


LH SHOWN
RH OPPOSITE

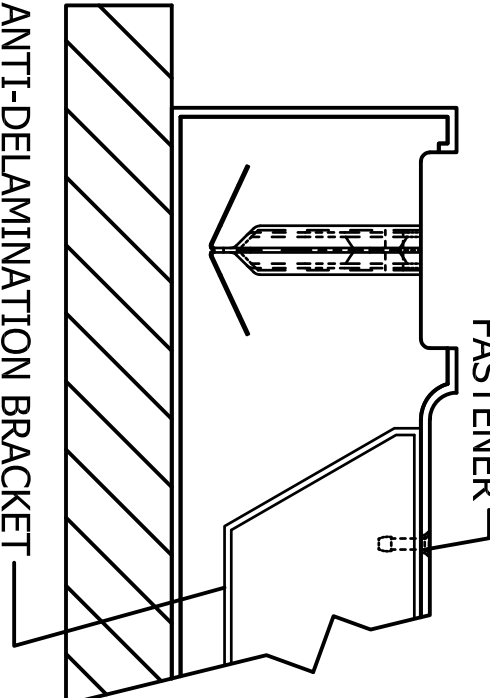
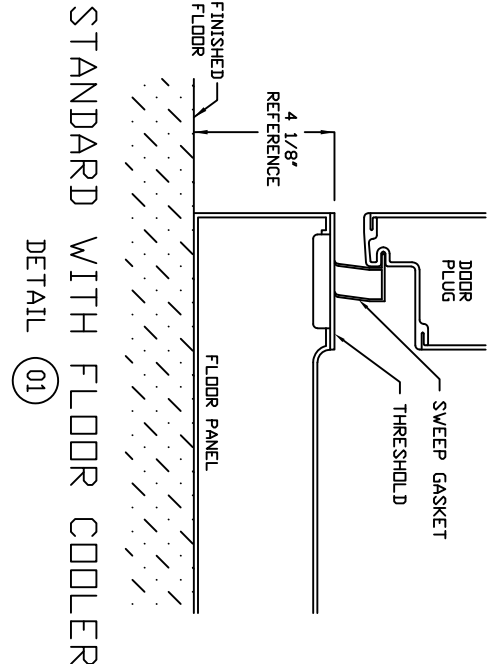
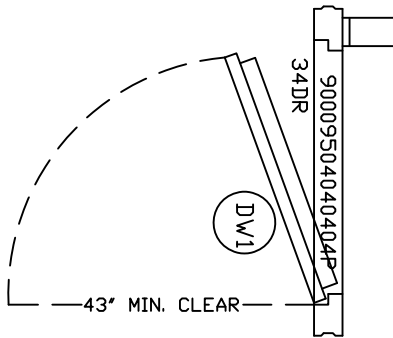


DOOR ELEVATION
46x82.25DS 34x78 DR CLR STD
THRESHOLD DETAIL 01

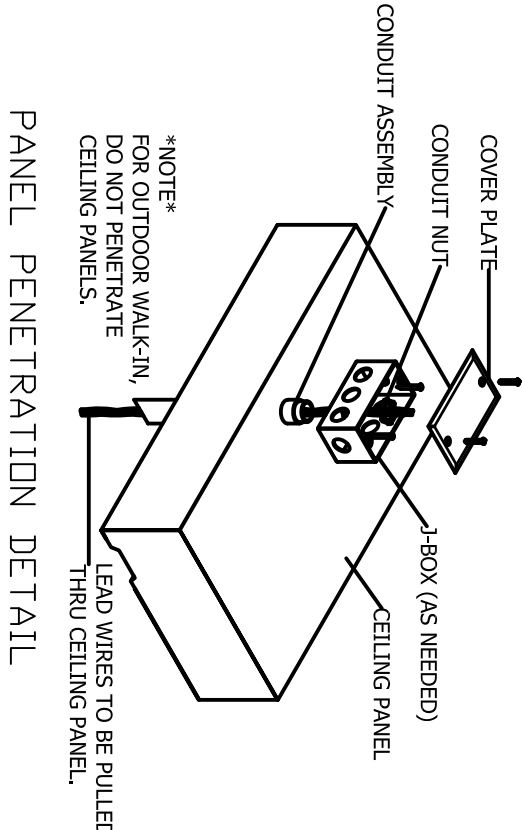
OPTION A DOOR SWING



OPTION B DOOR SWING



AT EVERY ENTRANCE CONDUIT, FORCE SEALANT AROUND THE EXTERIOR OF THE ELECTRICAL CONDUIT AND INSIDE THE CONDUIT AROUND THE WIRES. FAILURE TO FOLLOW THESE INSTRUCTIONS MAY CAUSE DAMAGE TO ELECTRICAL COMPONENTS ESPECIALLY LIGHTS WHICH WILL NOT BE COVERED UNDER WARRANTY.



!ATTENTION

1. **SMOOTH FINISHES** NOT INTENDED FOR INSTALLATION. **AS BUILT DRAWINGS** FOR INSTALLATION WILL BE AVAILABLE AFTER ORDER IS PLACED.
2. ALL WALK-INS ARE DESIGNED FOR INDOOR APPLICATION UNLESS NOTED OTHERWISE.
3. ALL WALK-INS ARE DESIGNED FOR INDOOR APPLICATION UNLESS NOTED OTHERWISE.
4. ALLOW 2" MINIMUM CLEARANCE WITH AIRFLOW OF 5 CFM PER 100 SQ FT AROUND ENTIRE PANEL SURFACES. INDOOR WALK-INS REQUIRE A 75% AMBIENT AND 55% RELATIVE HUMIDITY OR LESS AROUND THE EXTERIOR OF THE WALK-IN.
5. ALL WALK-INS ARE DESIGNED FOR INDOOR APPLICATION UNLESS NOTED OTHERWISE.
6. QUARRY TILE OR CONCRETE FLOOR APPLICATIONS: METAL PANEL FINISHING MAY BE SUSCEPTIBLE TO STAINING DUE TO EXCESSIVE MOISTURE CREATED BY THE INSULATION OF CONCRETE TYPE MATERIALS. IT IS ABSOLUTELY NECESSARY THAT EACH ROOM BE PROPERLY VENTILATED.
7. PANEL LAYOUT MAY CHANGE BASED ON OPTIMAL MANUFACTURING STANDARDS.
8. WALK-IN TOP IS NOT INTENDED FOR FOOT TRAFFIC, STORAGE, OR CONDENSING UNIT MOUNTING UNLESS NOTED OTHERWISE.
9. ALL WALK-INS ARE DESIGNED FOR INDOOR APPLICATION UNLESS NOTED OTHERWISE.
10. FLOOR, CORNER, AND PIT DETAILS ARE FOR GENERAL REFERENCE ONLY. THESE DRAWINGS SHOULD NOT BE USED OR INCORPORATED IN THE DESIGN OR REBARATION OF THE INSULATED FLOOR, SUBFLOOR OR CURBS, WITHOUT HAVING THE DESIGN REVIEWED BY A QUALIFIED ARCHITECT.
11. THE FOAM PASTIC USED IN THIS PRODUCT COMPLIES TO THE BK SECTION 300.0 AS FOLLOWS: FLAME SPREAD RATING: 20; SMOKE DEVELOPMENT: 100; FLOOR FINISHING: 100. ALL WALK-INS ARE DESIGNED FOR INDOOR APPLICATION UNLESS NOTED OTHERWISE.
12. ALL WALK-INS ARE DESIGNED FOR INDOOR APPLICATION UNLESS NOTED OTHERWISE.
13. FLOORS NOT DESIGNED FOR WET MOPPING, PALETTE JACKS, OR FORK-LIFT TRUCKS.

FOR APPROVAL

YOU MUST REVIEW ALL NOTES, DETAILS, DIMENSIONS, FINISHES, DOORS, SIZES, LOCATIONS AND SWINGS.

- ☐ **APPROVAL**: NO CHANGE REQUIRED, MANUFACTURE AS DRAWN.
- ☐ **APPROVED AS NOTED**: HAVE REQUIRED CHANGES AND MANUFACTURE AS DRAWN.
- ☐ **NOT APPROVED**: DESIGN CHANGES REQUIRE DRAWING REVISION AND RESUBMISSION.
- DATE: _____ BY: _____

SMOOTH FINISH DISCLAIMER

Panels with non-textured and/or no-profile panel finishes (smooth finishes) on the exterior and interior faces may exhibit "oil canning" and flatness imperfections on the surface. Our standard panels have a stucco embossed texture on both faces that helps to reduce oil canning and any other irregularities in the exposed surface. Please be aware of this potential situation in your specification process. Such "oil canning" and flatness issues are typical and are not covered under standard warranties.

DRAWN BY:	DATE:	CHECK BY:	DATE:
DDC	6/30/15		

SHEET #
1 of 1

Customer Name

KF7-068-CR



2915 Tennessee Avenue North, Parsons, TN 38363 (731) 847-6361 ** (800) 826-7036 *

QUOTE #:
DRAWING #: KF7-068-CR