

## Refrigeration Equipment 4-Drawer Mega Top Prep Table 61" Long 24-1/6 Pan

ITEM # \_\_\_\_\_  
MODEL # \_\_\_\_\_  
NAME # \_\_\_\_\_  
SIS # \_\_\_\_\_  
AIA # \_\_\_\_\_



738288 (KCHMT60.24.4D)

4-Drawer Mega Top Prep  
Table 61" Long 24-1/6 Pan

### Short Form Specification

#### Item No.

4-drawer mega top refrigerated preparation table. Exterior back panel and exterior bottom panel in galvanized steel, exterior side and top panel in 430 stainless steel; interior back, top and interior bottom panels in 304 stainless steel, worktop in 304 stainless steel. Built-in refrigeration unit and an insulated lid to maintain food freshness. Fin & Tube Condenser improves performance in high-temperature environments. Automatic Defrost Cooling System to provide worry-free performances. Full-depth cutting board of 61x9x0,5 in. Control panel, and removable drawer gaskets. Temperature range: +33/+41°F.

R290 gas in the refrigeration circuit.  
ETL Safety and Sanitation certifications.  
3/5 Years warranty.

### Main Features

- Removable gasket for easy cleaning operations.
- Fin & Tube Condenser improves performance in high temperature environments.
- Automatic Defrost Cooling System provides worry-free performance.
- Electronic Temperature Control, quick and simple to set, with control display for easy monitoring.
- Full Depth cutting board.
- External temperature display.
- Cabinet completely insulated with high density polyurethane for low environmental impact.

### Construction

- Heavy duty casters.
- Insulated lid maintains food freshness.
- Pre-wired heavy duty power cord.
- Magnetic gasket removable without tools for easy cleaning.

### Sustainability

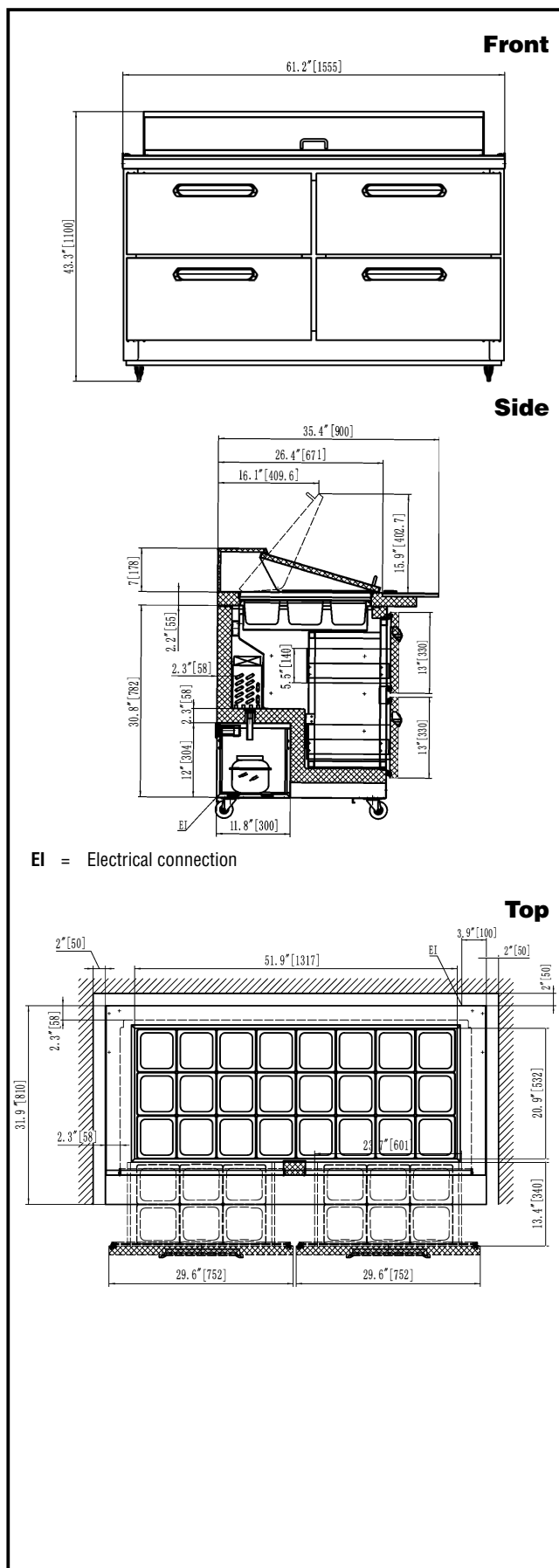
- CFC and HCFC free, highly ecological refrigerant type: R290 (ecological gas in foam: cyclopentane). Hydrocarbon refrigerant gas R290 for the lowest environmental impact (GWP=3), to reduce green house and ozone depletion effects.
- Hydrocarbon refrigerant gas R290 for the lowest environmental impact (GWP=3) - CFC and HCFC free.
- High efficiency components to minimize the energy consumption still guaranteeing the highest performances.

APPROVAL: \_\_\_\_\_

# Refrigeration Equipment

## 4-Drawer Mega Top Prep Table

### 61" Long 24-1/6 Pan



### Electric

#### Supply voltage:

738288 (KCHMT60.24.4D) 115 V/1 ph/60 Hz

#### Electrical power, max:

0.78 kW

#### Plug type:

USA NEMA 5-15P

### Capacity:

#### Gross capacity:

15.5 cu.feet

### Key Information:

#### Capacity:

15.5 cu.ft.

#### External dimensions, Width:

61 1/4" (1555 mm)

#### External dimensions, Depth:

35 7/16" (900 mm)

#### External dimensions, Height:

43 5/16" (1100 mm)

#### Internal Dimensions (depth):

23 13/16" / (605 mm)

#### Internal Dimensions (height):

23 1/2" / (597 mm)

#### Internal Dimensions (width):

56 1/4" / (1429 mm)

#### Shipping height:

47 1/4" (1200 mm)

#### Shipping weight:

518 lbs (235 kg)

#### Shipping volume:

61.5 ft<sup>3</sup> (1.74 m<sup>3</sup>)

#### Type of external material:

Stainless Steel

#### Type of internal material:

Polystyrene

#### Warranty:

3 / 5 years

#### Approvals

ETL C&US;ETL SANITATION

#### N° of drawers:

4

### Refrigeration Data

#### Compressor power:

1/3 hp

#### Operating temperature min.:

32 °F

#### Operating temperature max.:

41 °F

#### Condenser type:

Fin & tube

#### Defrost type:

Auto Defrost

### Sustainability

#### Current consumption:

4.3 Amps

#### Refrigerant type:

R290

#### GWP Index:

3

#### Refrigerant weight:

90 g