

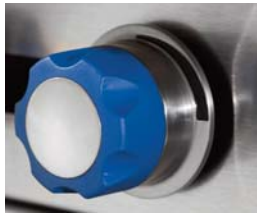
Model Number
IHPA-2-12-E
IHPA-4-24-E
IHPA-6-36-E
IHPA-8-48-E
IHPA-10-60-E



9" (229 mm) sealed round plate elements with easy to clean flat surface.



Large 5" (127 mm) stainless steel landing ledge for convenient plating.



Durable cast aluminum with a Valox™ heat protection grip.



IHPA-6-36-E shown

ROUND PLATE ELEMENTS - 2 KW round plate elements with easy-to-clean flat surface.

- Provides a solid flat surface for fast, even heating.
- Plates are 9" (229) diameter for maximum pan contact.
- Solid top prevents spills from entering unit making clean-up easy.
- Infinite heat controls for maximum cooking flexibility.

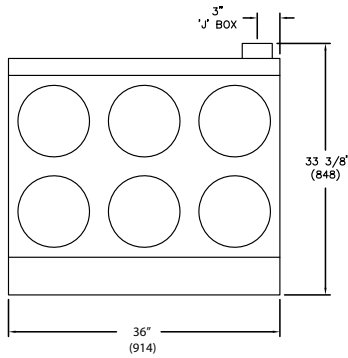
EXTERIOR FEATURES - Stainless steel front, top and sides for cleanability and professional look.

- Welded and polished stainless steel seams.
- Range Match profile when placed on a refrigerated base or equipment stand.
- Large 5" (127 mm) stainless steel landing ledge is ideal for plating.
- Control knobs are durable cast aluminum with a Valox™ "cool to the touch" grip.
- 4" (102 mm) heavy duty legs with adjustable feet.
- One year parts and labor warranty.

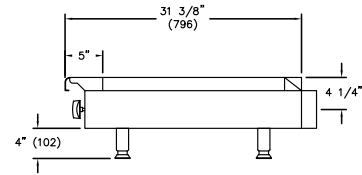
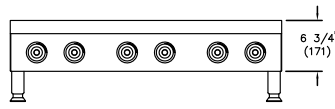




HOT PLATES 31-3/8" DEPTH ELECTRIC ROUND PLATES



IHPA-6-36-E



ELECTRIC HOT PLATES - 31-3/8" (797 MM) DEPTH

TOP	WIDTH	MODEL	ROUND ELEMENTS	TOTAL KW	SHIP WEIGHT (KG)	LBS
	12" (305 mm)	IHPA-2-12-E	2	4	(37)	80
	24" (610 mm)	IHPA-4-24-E	4	8	(64)	140
	36" (914 mm)	IHPA-6-36-E	6	12	(95)	210
	48" (1219 mm)	IHPA-8-48-E	8	16	(123)	270
	60" (1524 mm)	IHPA-10-60-E	10	20	(147)	325

Measurements in () are metric equivalents.

ELECTRICAL REQUIREMENTS				
MODEL	TOTAL KW	VOLTS	PH	TOTAL AMPS
IHPA-2-12-E	4	208	1	19
	4	208	3	14
	4	240	1	17
	4	240	3	13
	4	480*	3	6
IHPA-4-24-E	8	208	1	39
	8	208	3	29
	8	240	1	33
	8	240	3	25
	8	480*	3	13
IHPA-6-36-E	12	208	1	58
	12	208	3	38
	12	240	1	50
	12	240	3	33
	12	480*	3	17
IHPA-8-48-E	16	208	1	77
	16	208	3	58
	16	240	1	67
	16	240	3	50
	16	480*	3	25

MODEL	TOTAL KW	VOLTS	PH	AMPS	
				J-BOX "A"	J-BOX "B"
IHPA-10-60-E	20	208	1	48	48
	20	208	3	43	43
	20	240	1	42	42
	20	240	3	37	37
	20	480*	3	19	19

* For export only, additional charge.
NOTE: IHPA-10-60-E has 2 J-Boxes.

CLEARANCE REQUIREMENTS

For use only on non-combustible surfaces. Provide 0" clearance from non-combustible surfaces and 8" (203 mm) from combustible surfaces.

OPTIONS AND ACCESSORIES

- Stainless steel equipment stands
- 6" (152 mm) casters for equipment stands
- 480 volts (additional charge)

MODEL DIMENSIONS

IHPA-2-12-E	12" w x 31-3/8" d x 10-3/4" h (305 x 797 x 273 mm)
IHPA-4-24-E	24" w x 31-3/8" d x 10-3/4" h (610 x 797 x 273 mm)
IHPA-6-36-E	36" w x 31-3/8" d x 10-3/4" h (914 x 797 x 273 mm)
IHPA-8-48-E	48" w x 31-3/8" d x 10-3/4" h (1219 x 797 x 273 mm)
IHPA-10-60-E	60" w x 31-3/8" d x 10-3/4" h (1524 x 797 x 273 mm)

MODEL CRATED DIMENSIONS

IHPA-2-12-E	14-1/2" w x 35" d x 12" h (368 x 889 x 324 mm)
IHPA-4-24-E	26-1/2" w x 35" d x 12" h (673 x 889 x 324 mm)
IHPA-6-36-E	38-1/2" w x 35" d x 12" h (978 x 889 x 324 mm)
IHPA-8-48-E	50-1/2" w x 35" d x 12" h (1283 x 889 x 324 mm)
IHPA-10-60-E	62-1/2" w x 35" d x 12" h (1588 x 889 x 324 mm)



E-12 2/15

© 2015 Imperial Commercial Cooking Equipment

Printed in the U.S.A.

Imperial reserves the right to change specifications at any time without prior notice and without any obligation for past or future equipment purchases. Visit www.imperialrange.com for specification updates.

1128 Sherborn Street Corona, CA 92879
800.343.7790 Ph: 951.281.1830 Fx: 951.281.1879
www.imperialrange.com
E-mail: imperialsales@imperialrange.com