

## 32E Series - Endless Design Curved Glass - Single Duty - Red Meat



| Model No.           | Description    | Length | Depth | Height | Voltage | Amps | HP/BTUs | Power Cord | Est. Ship Weight |
|---------------------|----------------|--------|-------|--------|---------|------|---------|------------|------------------|
| <b>SC-CMS32E-4C</b> | Self Contained | 50"    | 30.5" | 50.5"  | 115     | 12.0 | 1/4     | YES        | 500              |
| <b>SC-CMS32E-6C</b> | Self Contained | 74"    | 30.5" | 50.5"  | 115     | 12.0 | 1/3     | YES        | 710              |
| <b>SC-CMS32E-8C</b> | Self Contained | 98"    | 30.5" | 50.5"  | 115     | 16.0 | 1/2     | YES        | 940              |
| <b>R-CMS32E-4C</b>  | Remote         | 50"    | 30.5" | 50.5"  | 115     | 1.4  | 1400    | NO         | 460              |
| <b>R-CMS32E-6C</b>  | Remote         | 74"    | 30.5" | 50.5"  | 115     | 2.2  | 2100    | NO         | 660              |
| <b>R-CMS32E-8C</b>  | Remote         | 98"    | 30.5" | 50.5"  | 115     | 2.8  | 2800    | NO         | 910              |

MODEL NUMBER PREFIX - SC = Self Contained R = Remote  
 MODEL NUMBER SUFFIX - W = White B = Black S = Stainless Steel LED = LED lighting  
 • Cases are designed to operate at 75 degrees Fahrenheit and 55% relative humidity  
 • Cases are equipped with drains; check your local building codes for connection requirements.  
 • Specification subject to change without notice  
 IF COLORS ARE MIXED AN ADDITIONAL CHARGE WILL APPLY



## 32E Series - Endless Design Curved Glass - Single Duty - Red Meat

### Standard Specifications and Optional Features

#### CONSTRUCTION

- UL Classified to ANSI/NSF 7
- Foamed in place CFC free foam
- Thermal insulated front glass
- Heavy gauge steel super structure
- Single duty display
- Endless design allows for continuous line up
- Drain is included for cleaning

#### INTERIOR

- White, black, and stainless steel ends
- White aluminum floor-main deck shelves
- Air insulated baffle  
(prevents moisture from dripping into display area)

#### EXTERIOR

- Double pane rear removable doors
- Newly designed rear compression door jamb
- Removable front grille allows for cleaning
- Removable rear grille for easy servicing
- 1" removeable end panels
- 1" Front bumper

#### FINISHES

- White, black, and stainless steel front and ends
- Stainless steel mirror trim
- Stainless steel heavy gauge top - 20" W
- Rear of unit is stainless steel brush finish at top
- Bottom rear is designer white or glossy black

#### LIGHTING

- 1 row of lighting at top of unit

#### ELECTRICAL REQUIREMENTS

- 115V with powercord
- UL/CUL listed
- 115V-5AMP general purpose receptacle

#### REFRIGERATION

- Copevap system (eliminates need for condensate pan)
- R513A expansion valve system (SC)
- R448A expansion valve system (R)
- Gravity coil located at inside top of unit
- Humidity coil located at main deck  
(provides extra humidity)
- Self contained unit
- Automatic defrost electronically controlled  
(self contained units only)
- Electronically maintains constant temperatures
- Remotes available

#### OPTIONS

- Stainless steel, laminate, or paint
- Mirrored doors
- Stainless steel mezzanine shelf
- 1" Special color front bumper
- Door locks
- Digital thermometer
- Meat platters
- Red meat bulbs

#### Important Note:

**All refrigerated cases are designed to operate in an environment of 75 degrees and 55% relative humidity. Product must be cooled before being displayed within the case.**

**DRAIN IS REQUIRED**

## 32E Series - Endless Design Curved Glass - Single Duty - Red Meat

| Model No.                                   | SC<br>R     | SC-CMS32E-4C<br>R-CMS32E-4C | SC-CMS32E-6C<br>R-CMS32E-6C | SC-CMS32E-8C<br>R-CMS32E-8C    |
|---|-------------|-----------------------------|-----------------------------|--------------------------------|
| Length with (2) ends                        |             | 50"                         | 74"                         | 98"                            |
| Length without ends                         |             | 48"                         | 72"                         | 96"                            |
| Height with ends                            |             | 50.5"                       | 50.5"                       | 50.5"                          |
| Height without ends                         |             | 50"                         | 50"                         | 50"                            |
| Depth with ends                             |             | 30.5"                       | 30.5"                       | 30.5"                          |
| Depth without ends                          |             | 30"                         | 30"                         | 30"                            |
| Endless design<br>(Dimensions are +/- 1/4") |             | YES                         | YES                         | YES                            |
| Operating temperature                       |             | 34°F to 36°F                | 34°F to 36°F                | 34°F to 36°F                   |
| Refrigerant (exp. valve)                    | SC          | R513A                       | R513A                       | R513A                          |
| Refrigerant (exp. valve)                    | R           | R448A                       | R448A                       | R448A                          |
| Compressor size HP                          | SC          | 1/4                         | 1/3                         | 1/2                            |
| Defrost per day (24 hours)                  | Air Defrost | 1 per day                   | 1 per day                   | 1 per day                      |
| BTU's at +20°F Evap. Temp.                  | R           | 1400                        | 2100                        | 2800                           |
| Voltage                                     | SC          | 115                         | 115                         | 115                            |
| Amperage                                    | SC          | 6.6                         | 9.7                         | 12.4                           |
| Remote Voltage                              | R           | 115                         | 115                         | 115                            |
| Amperage, lights only                       | R           | 1.4                         | 2.2                         | 2.8                            |
| Cord and plug                               | SC<br>R     | YES<br>NO                   | YES<br>NO                   | YES<br>NO                      |
| Exterior color                              |             | W, B, S                     | W, B, S                     | W, B, S                        |
| Interior color                              |             | W, B, S                     | W, B, S                     | W, B, S                        |
| Floors                                      |             | W, B, S                     | W, B, S                     | W, B, S                        |
| # of top doors                              |             | 2                           | 2                           | 4                              |
| Door size                                   |             | 20.8" x 23.5"               | 31.3" x 23.5"               | 20.8" x 23.5"                  |
| # of coils                                  |             | 2                           | 2                           | 2                              |
| Bottom storage                              |             | NO                          | NO                          | NO                             |
| Front glass                                 |             | Curved                      | Curved                      | Curved                         |
| # of main deck shelves                      |             | 2                           | 3                           | 4                              |
| Main deck size                              |             | 23.625" x 25"               | 23.625" x 25"               | 23.625" x 25"                  |
| Cubic capacity                              |             | 23                          | 34.5                        | 46                             |
| Mezzanine shelf, (2) Optional               |             | 47.00" x 12.00" (Optional)  | 69.25" x 12.00" (Optional)  | (2) 47.00" x 12.00" (Optional) |
| Shipping Info                               |             |                             |                             |                                |
| Height                                      |             | 55"                         | 55"                         | 55"                            |
| Depth                                       |             | 44"                         | 44"                         | 44"                            |
| Length                                      |             | 61"                         | 87"                         | 115"                           |
| Gross weight SC/R                           |             | 470/430                     | 680/630                     | 910/860                        |
| Cubic feet                                  |             | 85                          | 122                         | 161                            |

(ALL WHITE OR ALL BLACK, NO EXTRA CHARGE—IF COLORS ARE MIXED AN ADDITIONAL CHARGE WILL APPLY)

### Prefix

SC = Self Contained  
R = Remote

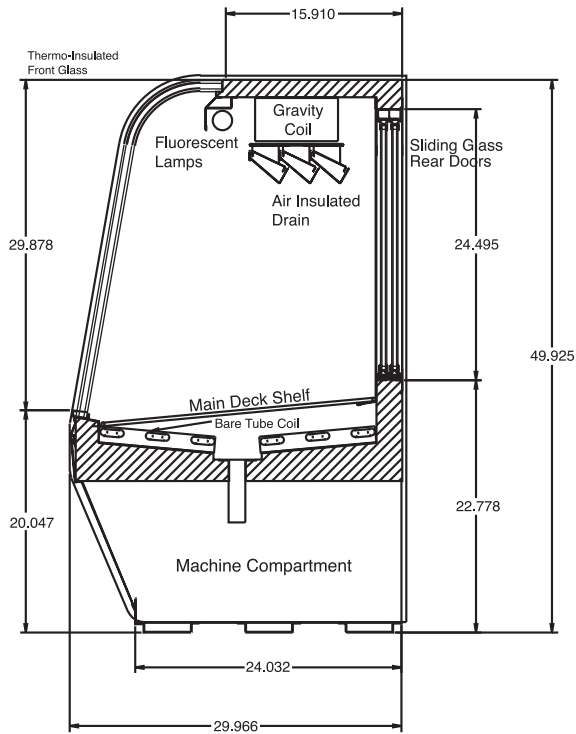
### Suffix

B = Black  
W = White  
S = Stainless Steel  
LED = LED lighting

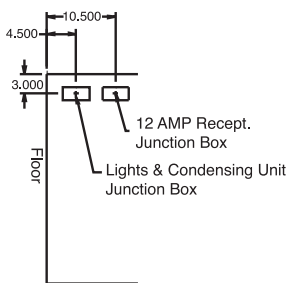
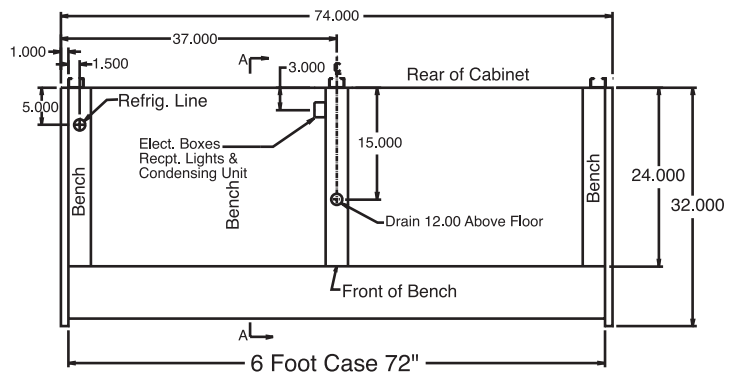
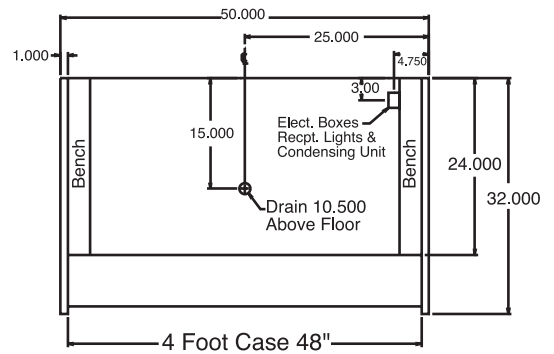
- Cases are designed to operate at 75 degrees Fahrenheit and 55% relative humidity
- Cases are equipped with drains; check your local building codes for connection requirements.
- Specification subject to change without notice

## 32E Series - Endless Design Curved Glass - Single Duty - Red Meat

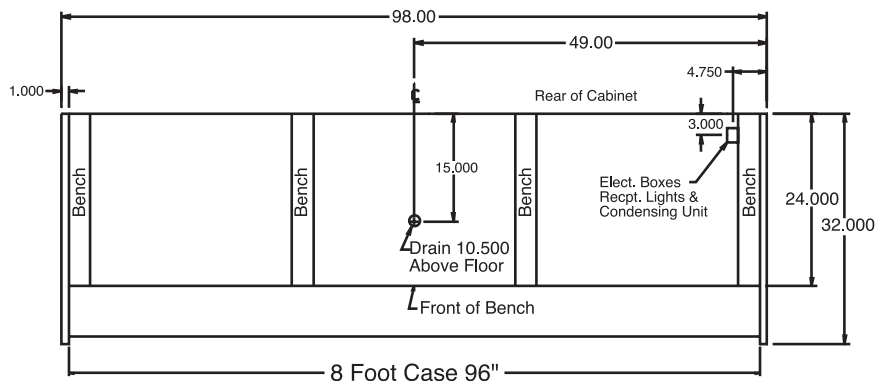
### Technical Data • Side View • Plan View



**Cross Section**



**Side View**



**Plan Views**