

## 35 Series Service Case Double Duty - Deli



Pass-Thru Model

Model No.	Description	Length	Depth	Height	Voltage	Amps	HP/BTUs	Power Cord	Est. Ship Weight
<b>SC-CDS35-4-LED</b>	Self-contained	50"	37.5"	52"	115	12.0	1/4	YES	500
<b>SC-CDS35-6-LED</b>	Self-contained	71"	35.5"	52"	115	12.0	1/3	YES	645
<b>SC-CDS35-8-LED</b>	Self-contained	95"	35.5"	52"	115	16.0	1/2	YES	900
<b>SC-CDS35-10-LED</b>	Self-contained	119"	35.5"	52"	115	13.8	1/2	NO	1230
<b>SC-CDS35-12-LED</b>	Self-contained	143"	35.5"	52"	115	17.4	3/4	NO	1344
<b>SC-CDS35-4-PT-LED</b>	Self-contained	50"	37.5"	52"	115	12.0	1/4	YES	500
<b>SC-CDS35-6-PT-LED</b>	Self-contained	71"	35.5"	52"	115	12.0	1/3	YES	645
<b>SC-CDS35-8-PT-LED</b>	Self-contained	95"	35.5"	52"	115	16.0	1/2	YES	900
<b>R-CDS35-4-LED</b>	Remote	50"	37.5"	52"	115	0.8	1400	NO	460
<b>R-CDS35-6-LED</b>	Remote	71"	35.5"	52"	115	1.3	2100	NO	595
<b>R-CDS35-8-LED</b>	Remote	95"	35.5"	52"	115	1.6	2800	NO	845
<b>R-CDS35-10-LED</b>	Remote	119"	35.5"	52"	115	2.4	3500	NO	1175
<b>R-CDS35-12-LED</b>	Remote	143"	35.5"	52"	115	2.4	4200	NO	1295

MODEL NUMBER PREFIX - SC = Self-contained R = Remote  
 MODEL NUMBER SUFFIX - W = White B = Black S = Stainless Steel LED = LED - lighting  
 • Cases are designed to operate at 75 degrees Fahrenheit and 55% relative humidity  
 • Cases are equipped with drains; check your local building codes for connection requirements.  
 • Specification subject to change without notice  
 IF COLORS ARE MIXED AN ADDITIONAL CHARGE WILL APPLY



## 35 Series Service Case Double Duty - Deli

### Standard Specifications and Optional Features

#### CONSTRUCTION

- UL - Classified to ANSI/NSF 7
- Foamed in place CFC free foam
- Thermal insulated front glass - 26" H
- Heavy gauge steel super structure
- Bottom storage
- Drain is included for cleaning

#### INTERIOR

- White, black or stainless steel ends
- Stainless steel heavy gauge mezzanine shelf
- White aluminum floor (bottom storage area)
- Air insulated baffle (prevents moisture from dripping into display area)

#### EXTERIOR

- Double pane rear removable doors
- Rear compression door jamb
- Removable front grille allows for cleaning
- Removable rear grille for easy servicing
- 1" Front Bumper

#### FINISHES

- White, black or stainless steel front and ends
- Stainless steel mirror trim
- Stainless steel heavy gauge top - 17.375" W
- Bottom rear is designer white, black or stainless steel aluminum

#### LIGHTING

- 2 rows of lighting at top of unit

#### ELECTRICAL REQUIREMENTS

- 115V 4', 6', & 8' with power cord
- Unit must be hard wired, 10' & 12' only
- UL/CUL listed
- 115V-5AMP general purpose receptacle (wired separately) 10' & 12' only

#### REFRIGERATION

- Copevap system (eliminates need for condensate pan)
- Self-contained - R513A expansion valve system
- Remote - R407A expansion valve system
- Gravity coil located at inside top of unit
- Automatic defrost electronically controlled (Self-contained units only)
- Electronically control maintains constant temperatures
- Remotes available

#### OPTIONS

- LED - lit
- LED - lit shelf
- Scale stand
- Paper cutter
- Stainless steel, laminate, or paint
- Mirrored doors
- Extra stainless steel mezzanine shelf
- Drop work shelf
- 2" Front bumper
- Door lock
- Digital thermometer
- Pass thru front doors 4', 6', 8' only
- Sandwich racks
- Salad pan settings

#### Important Note:

All refrigerated cases are designed to operate in an environment of 75 degrees and 55% relative humidity. Product must be cooled before being displayed within the case.

**DRAIN IS REQUIRED**

## 35 Series Service Case Double Duty - Deli

### Technical Data

Model No.	SC R	SC-CDS35-4-LED R-CDS35-4-LED	SC-CDS35-6-LED R-CDS35-6-LED	SC-CDS35-8-LED R-CDS35-8-LED	SC-CDS35-10-LED R-CDS35-10-LED	SC-CDS35-12-LED R-CDS35-12-LED
Length		50"	71"	95"	119"	143"
Height		52"	52"	52"	52"	52"
Depth		35.5"	35.5"	35.5"	35.5"	35.5"
Depth with bottom door (Dimensions are +/- 1/4")		37.5"				
Operating temperature		36°F to 40°F	36°F to 40°F	36°F to 40°F	36°F to 40°F	36°F to 40°F
Refrigerant (exp. valve)	SC	R513A	R513A	R513A	R513A	R513A
Refrigerant (exp. valve)	R	R407A	R407A	R407A	R407A	R407A
Compressor size HP	SC	1/4	1/3	1/2	1/2	3/4
Defrost per day (24 hours)	Air Defrost	1 per day	1 per day	1 per day	1 per day	1 per day
BTU's at +20°F Evap. Temp.	R	1400	2100	2800	3500	4200
Voltage	SC	115	115	115	115	115
Amperage	SC	12.0	12.0	16.0	13.8	17.4
Remote Voltage	R	115	115	115	115	115
Amperage, lights only	R	0.8	1.3	1.6	2.4	2.4
Cord and plug	SC	YES	YES	YES	NO	NO
	R	NO	NO	NO	NO	NO
Exterior color		W, B, S	W, B, S	W, B, S	W, B, S	W, B, S
Interior color		W, B, S	W, B, S	W, B, S	W, B, S	W, B, S
Inside end panels		W, B, S	W, B, S	W, B, S	W, B, S	W, B, S
Floors		W, B, S	W, B, S	W, B, S	W, B, S	W, B, S
# of top doors		2	2	4	4	4
Door size		19.56" x 19.25"	29.81" x 19.25"	19.56" x 19.25"	23.81" x 19.25"	29.81" x 19.25"
# of bottom doors	SC	1 external	2	2	2	4
	R	2	2	2	4	4
# of coils		2	2	2	2	2
Bottom storage		Yes	Yes	Yes	Yes	Yes
Front glass		26" x 45"	26" x 66"	26" x 90"	26" x 114"	26" x 138"
# of main deck shelves		2	3	4	5	6
Main deck size		31.625" x 22.25"	31.625" x 22.25"	31.625" x 22.25"	31.625" x 22.25"	31.625" x 22.25"
Cubic capacity		30	45	60	75	90
Mezzanine shelf		Standard	Standard	Standard	Standard	Standard
Shipping Info						
Height		58"	58"	58"	58"	58"
Depth		44"	44"	44"	44"	44"
Length		61"	87"	109"	135"	157"
Gross weight SC/R		500/460	645/595	900/845	1230/1175	1344/1295
Cubic feet		90	128	160	200	231

(ALL WHITE OR ALL BLACK, NO EXTRA CHARGE—IF COLORS ARE MIXED AN ADDITIONAL CHARGE WILL APPLY)

#### Prefix

SC = Self-contained  
R = Remote

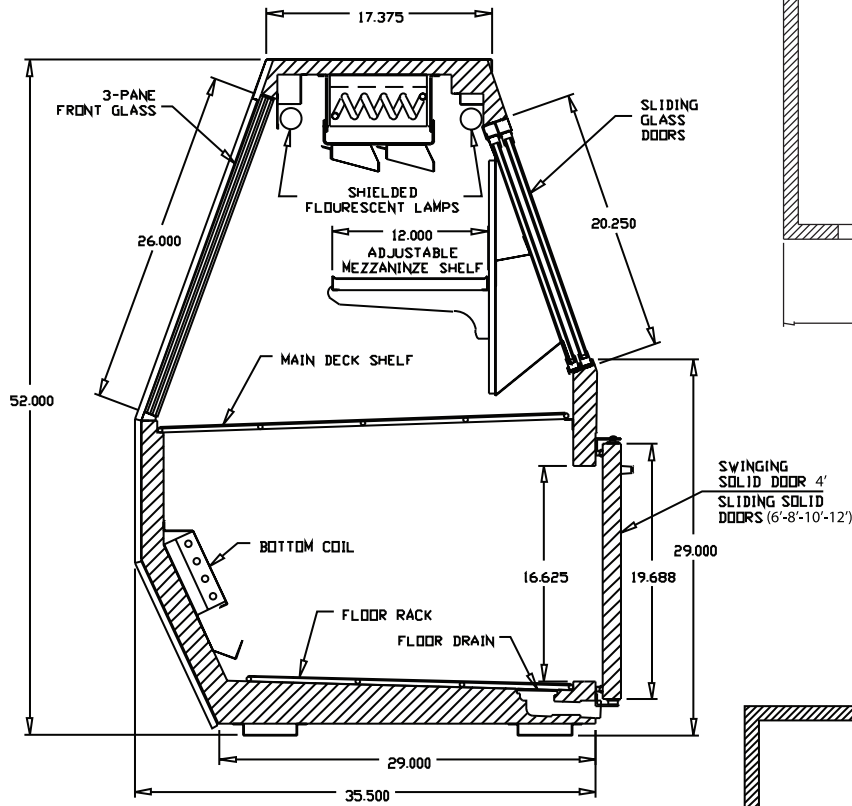
#### Suffix

B = Black  
W = White  
S = Stainless Steel  
LED = LED lighting

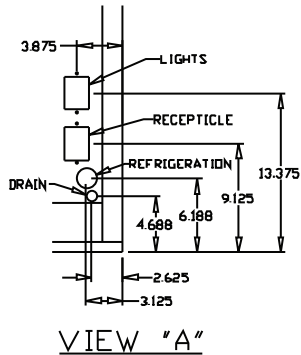
- Cases are designed to operate at 75 degrees Fahrenheit and 55% relative humidity
- Cases are equipped with drains; check your local building codes for connection requirements.
- Specification subject to change without notice

## 35 Series Service Case Double Duty - Deli

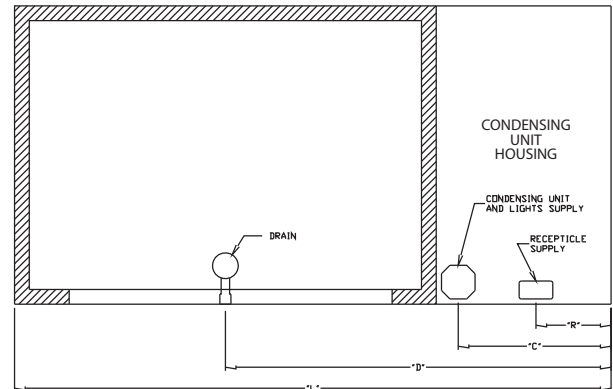
### Technical Data • Side View • Plan View



Cross Section

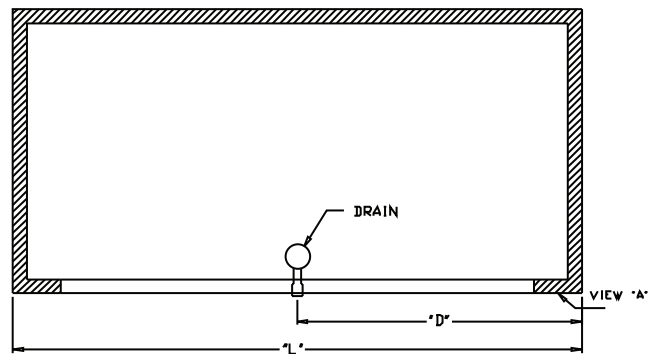


VIEW "A"



SIZE	"L"	"R"	"C"	"D"
4	50	25	25	33
6	71	9	18.250	45.875
8	95	9	18.250	57.875
10	119	9	18.250	69.875
12	143	9	18.250	81.875

Plan View Self-contained



SIZE	"L"	"D"
4	50	25.00
6	71	35.50
8	95	47.50
10	119	59.50
12	143	61.50

Plan View Remote