

32E Series - Endless Design Single Duty - Deli



Model No.	Description	Length	Depth	Height	Voltage	Amps	HP/BTUs	Power Cord	Est. Ship Weight
SC-CDS32E-4-LED	Self Contained	50"	30.5"	49.6"	115	12.0	1/4	YES	470
SC-CDS32E-6-LED	Self Contained	74"	30.5"	49.6"	115	12.0	1/3	YES	680
SC-CDS32E-8-LED	Self Contained	98"	30.5"	49.6"	115	16.0	1/2	YES	910
R-CDS32E-4-LED	Remote	50"	30.5"	49.6"	115	0.8	1400	NO	430
R-CDS32E-6-LED	Remote	74"	30.5"	49.6"	115	1.6	2100	NO	630
R-CDS32E-8-LED	Remote	98"	30.5"	49.6"	115	1.6	2800	NO	860
SC-CDS32E-4PT-LED	Self Contained	50"	30.5"	49.6"	115	12.0	1/3	YES	470
SC-CDS32E-6PT-LED	Self Contained	74"	30.5"	49.6"	115	12.0	1/3	YES	680
SC-CDS32E-8PT-LED	Self Contained	98"	30.5"	49.6"	115	16.0	1/2	YES	910

MODEL NUMBER PREFIX - SC = Self Contained R = Remote
 MODEL NUMBER SUFFIX - W = White B = Black S = Stainless Steel LED = LED lighting
 • Cases are designed to operate at 75 degrees Fahrenheit and 55% relative humidity
 • Cases are equipped with drains; check your local building codes for connection requirements.
 • Specification subject to change without notice
 IF COLORS ARE MIXED AN ADDITIONAL CHARGE WILL APPLY



32E Series - Endless Design Single Duty - Deli

Standard Specifications and Optional Features

CONSTRUCTION

- UL Classified to ANSI/NSF 7
- Foamed in place CFC free foam
- Thermal insulated front glass - 28" H
- Heavy gauge steel super structure
- Single duty display
- Endless design allows for continuous line up
- Drain is included for cleaning

INTERIOR

- White, black, and stainless steel ends
- Stainless steel heavy gauge mezzanine shelf (2 rows)
- White aluminum floor-main deck shelves
- Air insulated baffle (prevents moisture from dripping into display area)

EXTERIOR

- Double pane rear removable doors
- Removable front grille allows for cleaning
- Removable rear grille for easy servicing
- 1" removeable end panels
- 1" Front bumper

FINISHES

- White, black, and stainless steel front and ends
- Stainless steel mirror trim
- Stainless steel heavy gauge top - 20" W
- Rear of unit is stainless steel brush finish at top
- Bottom rear is designer white or glossy black

LIGHTING

- 2 rows of LED lighting at top of unit

ELECTRICAL REQUIREMENTS

- 115V with powercord
- UL/CUL listed
- 115V-5AMP general purpose receptacle

REFRIGERATION

- Copevap system (eliminates need for condensate pan)
- R513A expansion valve system (SC)
- R448A expansion valve system (R)
- Gravity coil located at inside top of unit
- Self contained unit
- Automatic defrost electronically controlled (self contained units only)
- Electronically maintains constant temperatures
- Remotes available

OPTIONS

- Stainless steel, laminate, or paint
- Mirrored doors
- Extra stainless steel mezzanine shelf
- 1" Special color front bumper
- Door locks
- Pass thru front doors
- Salad pan settings

Important Note:

All refrigerated cases are designed to operate in an environment of 75 degrees and 55% relative humidity.

Product must be cooled before being displayed within the case.

DRAIN IS REQUIRED

32E Series - Endless Design Single Duty - Deli

Technical Data

Model No.	SC R	SC-CDS32E-4-LED R-CDS32E-4-LED	SC-CDS32E-6-LED R-CDS32E-6-LED	SC-CDS32E-8-LED R-CDS32E-8-LED	SC-CDS32E-4PT-LED R-CDS32E-4PT-LED	SC-CDS32E-6PT-LED R-CDS32E-6PT-LED	SC-CDS32E-8PT-LED R-CDS32E-8PT-LED
Length with (2) ends		50"	74"	98"	50"	74"	98"
Length without ends		48"	72"	96"	48"	72"	96"
Height with ends		49.625"	49.625"	49.625"	49.625"	49.625"	49.625"
Height without ends		49"	49"	49"	49"	49"	49"
Depth with ends		30.5"	30.5"	30.5"	30.5"	30.5"	30.5"
Depth without ends		30"	30"	30"	30"	30"	30"
Endless design (Dimensions are +/- 1/4")		YES	YES	YES	YES	YES	YES
Operating temperature		36°F to 40°F	36°F to 40°F	36°F to 40°F	36°F to 40°F	36°F to 40°F	36°F to 40°F
Refrigerant (exp. valve)	SC	R513A	R513A	R513A	R513A	R513A	R513A
Refrigerant (exp. valve)	R	R448A	R448A	R448A	R448A	R448A	R448A
Compressor size HP	SC	1/4	1/3	1/2	1/3	1/3	1/2
Defrost per day (24 hours)	Air Defrost	1 per day	1 per day	1 per day	1 per day	1 per day	1 per day
BTU's at +20°F Evap. Temp.	R	1400	2100	2800	1400	2100	2800
Voltage	SC	115	115	115	115	115	115
Amperage	SC	12.0	12.0	16.0	12.0	12.0	16.0
Remote Voltage	R	115	115	115	115	115	115
Amperage, lights only	R	0.8	1.6	1.6	0.8	1.6	1.6
Cord and plug	SC R	YES NO	YES NO	YES NO	YES NO	YES NO	YES NO
Exterior color		W, B, S	W, B, S	W, B, S	W, B, S	W, B, S	W, B, S
Interior color		W, B, S	W, B, S	W, B, S	W, B, S	W, B, S	W, B, S
Floors		W, B, S	W, B, S	W, B, S	W, B, S	W, B, S	W, B, S
# of top doors		2	2	4	2	2	4
Door size		20.8" x 23.5"	31.3" x 23.5"	20.8" x 23.5"	20.8" x 23.5"	31.3" x 23.5"	20.8" x 23.5"
# of coils		1	1	1	1	1	1
Bottom storage		NO	NO	NO	NO	NO	NO
Front glass size		28" x 46.6875"	28" x 70.6875"	28" x 94.6875"			
# of main deck shelves		2	3	4	2	3	4
Main deck size		23.625" x 25"	23.625" x 25"	23.625" x 25"	23.625" x 25"	23.625" x 25"	23.625" x 25"
Cubic capacity		23	34.5	46	23	34.5	46
Mezzanine shelf, 2 rows		47.00" x 12.00"	69.25" x 12.00"	(2) 47.00" x 12.00"	47.00" x 12.00"	69.25" x 12.00"	(2) 47.00" x 12.00"
Shipping Info							
Height		55"	55"	55"	55"	55"	55"
Depth		44"	44"	44"	44"	44"	44"
Length		61"	87"	115"	61"	87"	115"
Gross weight SC/R		470/430	680/630	910/910	470/430	680/630	910/860
Cubic feet		85	122	161	85	122	161

(ALL WHITE OR ALL BLACK, NO EXTRA CHARGE—IF COLORS ARE MIXED AN ADDITIONAL CHARGE WILL APPLY)

Prefix

SC = Self Contained
R = Remote

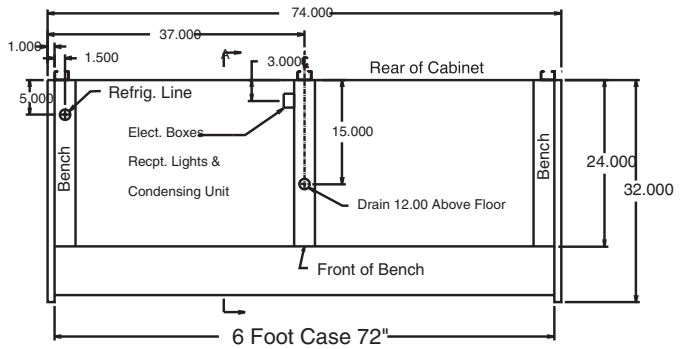
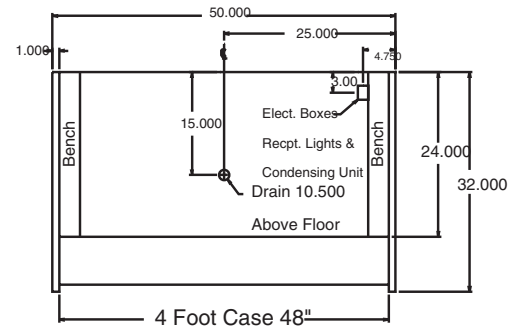
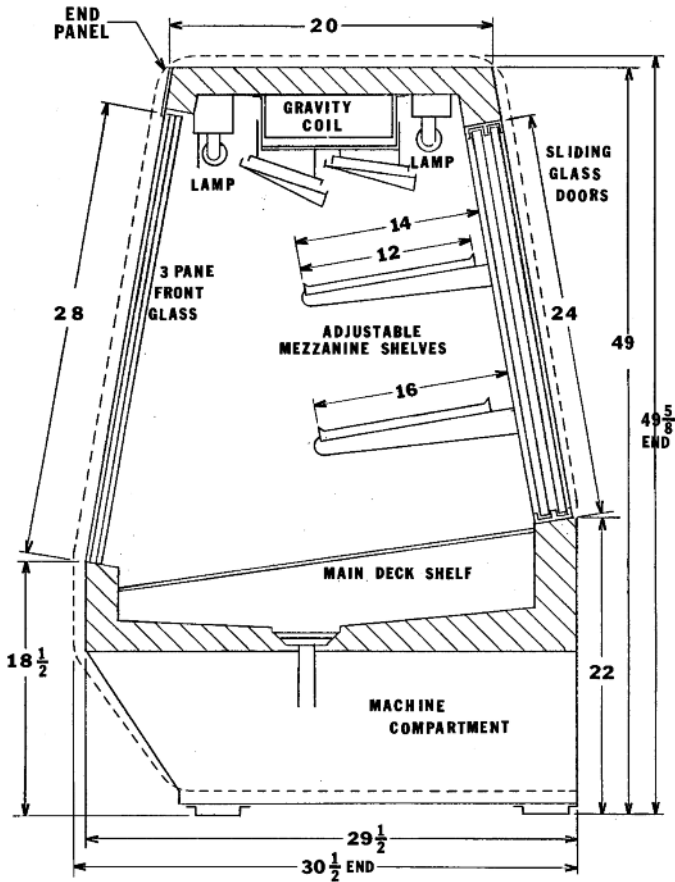
Suffix

B = Black
W = White
S = Stainless Steel
LED = LED lighting

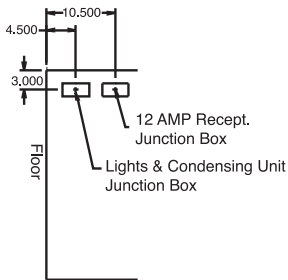
- Cases are designed to operate at 75 degrees Fahrenheit and 55% relative humidity
- Cases are equipped with drains; check your local building codes for connection requirements.
- Specification subject to change without notice

32E Series - Endless Design Single Duty - Deli

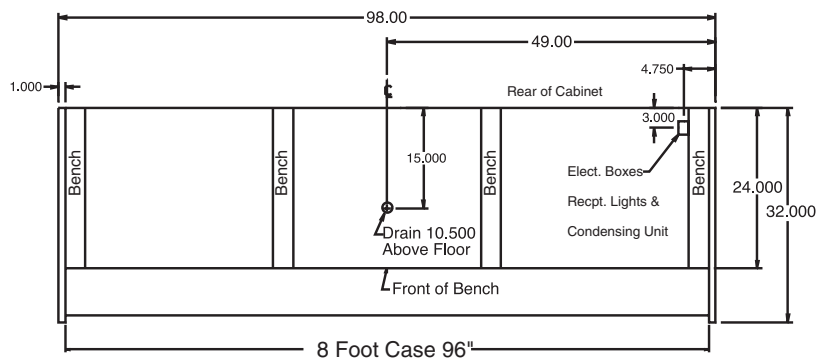
Technical Data • Side View • Plan View



Cross Section



Side View



Plan Views