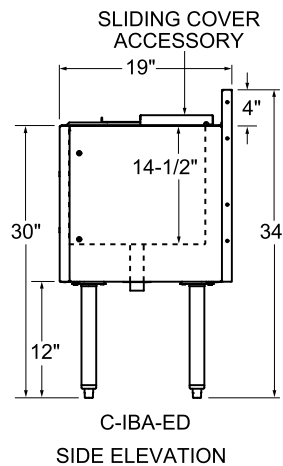


19" EXTRA DEEP ICE BINS*

MODEL	LIST	LTH	WGT	ICECAPACITY
C-IBA-18-ED	\$1,994	18"	75#	69#
C-IBA-24-ED	\$2,191	24"	80#	92#
C-IBA-30-ED	\$2,388	30"	90#	116#
C-IBA-36-ED	\$2,586	36"	100#	139#
C-IBA-42-ED	\$2,782	42"	110#	162#
C-IBA-48-ED	\$2,983	48"	125#	185#

EXTRA DEEP WITH 10-CIRCUIT COLD PLATE*

C-IBA-24-CP10-ED	\$4,064	24"	140#	92#
C-IBA-30-CP10-ED	\$4,334	30"	155#	116#
C-IBA-36-CP10-ED	\$4,725	36"	170#	139#
C-IBA-42-CP10-ED	\$5,250	42"	180#	162#
C-IBA-48-CP10-ED	\$5,469	48"	190#	185#



NOTE: Ice bins intended to store potable ice must be ordered with an ice bin cover to maintain the sanitation listing

*NOTE: These ice bin models are manufactured to order and are not returnable

ICE BIN ACCESSORIES

SINGLE SPEED RAILS

MODEL	DESCRIPTION	LIST	WGT
C-SR-12	12" single speed rail	\$177	5#
C-SR-18	18" single speed rail	\$198	6#
C-SR-24	24" single speed rail	\$218	7#
C-SR-30	30" single speed rail	\$239	9#
C-SR-36	36" single speed rail	\$260	10#
C-SR-42	42" single speed rail	\$283	12#
C-SR-48	48" single speed rail	\$303	13#

DOUBLE SPEED RAILS

MODEL	DESCRIPTION	LIST	WGT
C-DR-12	12" double speed rail	\$348	9#
C-DR-18	18" double speed rail	\$392	11#
C-DR-24	24" double speed rail	\$434	14#
C-DR-30	30" double speed rail	\$479	16#
C-DR-36	36" double speed rail	\$521	18#
C-DR-42	42" double speed rail	\$564	21#
C-DR-48	48" double speed rail	\$606	24#

CONDIMENT DISPENSER Stainless steel condiment dispenser with hinged plexi-glass lid and six 16 oz. plastic cups.

CCD	Condiment dispenser	\$220	5#
-----	---------------------	-------	----

ACCESSORIES FOR 19" DEEP (A) ICE BINS

ICE BIN COVERS Two-piece sliding stainless steel. Ice bins intended to store potable ice must be ordered with an ice bin cover to maintain the sanitation listing. If bottle wells are ordered, deduct 6" from cover length for one bottle well and 12" for two bottle wells.

MODEL	DESCRIPTION	LIST	WGT	MODEL	DESCRIPTION	LIST	WGT
IBCA-12	12"w ice bin cover - 19"d (A) ice bin	\$78	4#	IBCB-12	12"w ice bin cover - 24"d (B) ice bin	\$97	5#
IBCA-18	18"w ice bin cover - 19"d (A) ice bin	\$112	5#	IBCB-18	18"w ice bin cover - 24"d (B) ice bin	\$140	6#
IBCA-24	24"w ice bin cover - 19"d (A) ice bin	\$146	7#	IBCB-24	24"w ice bin cover - 24"d (B) ice bin	\$182	8#
IBCA-30	30"w ice bin cover - 19"d (A) ice bin	\$182	8#	IBCB-30	30"w ice bin cover - 24"d (B) ice bin	\$228	10#
IBCA-36	36"w ice bin cover - 19"d (A) ice bin	\$245	9#	IBCB-36	36"w ice bin cover - 24"d (B) ice bin	\$304	11#
IBCA-42	42"w ice bin cover - 19"d (A) ice bin	\$292	10#	IBCB-42	42"w ice bin cover - 24"d (B) ice bin	\$364	13#
IBCA-48	48"w ice bin cover - 19"d (A) ice bin	\$325	12#	IBCB-48	48"w ice bin cover - 24"d (B) ice bin	\$413	15#

BOTTLE WELLS For use with potable ice. May be positioned left or right inside cocktail ice bin. If two are ordered, they are positioned one at each side

BW3	3 bottle well for 19"d (A) ice bin	\$73	4#	BW4	4 bottle rack for 24"d (B) ice bin	\$140	5#
-----	------------------------------------	------	----	-----	------------------------------------	-------	----

BOTTLE RACKS For use with non-potable ice in bottle storage ice bin. Only fit in 12" long and larger ice bins. One rack may be ordered for each 6" of ice bin length. Not for use with sliding cover.

BR3	Bottle rack for 19"d (A) ice bin	\$70	3#	BR4	4 bottle rack for 24"d (B) ice bin	\$86	4#
-----	----------------------------------	------	----	-----	------------------------------------	------	----

ICE BIN DIVIDERS Stainless steel panel placed inside the ice bin front-to-back to separate different types of ice.

IBD-H-A	Ice bin divider for 19"d (A) ice bin	\$112	4#	IBD-H-B	Ice bin divider for 24"d (B) ice bin	\$143	4#
IBD-H-A-ED	Ice Bin divider for 19"d (A) extra deep ice bin	\$131	4#				