

Project _____
 Item _____
 Quantity _____
 CSI Section 11400
 Approved _____
 Date _____

Garland Induction Built-in Unit RTCSmp Module-Line "Four Cooking Zones"

Models

- GI-MO/QU 28000-650FL
- GI-MO/QU 28000-720FL



Standard Features

Induction generator:

A powerful generator that is fully integrated in an enclosed housing and equipped with an integrated fan. All connections such as the mains cable, operation, CAN cable and sensor cable can be connected externally through plug connections. The generator is equipped with an air ducting system, through which the heated air is exhausted. Using this design, the risk of a thermal short-circuit is reduced.

Control unit:

The control unit is the information and diagnostic hub for the whole induction unit. It is connected with the generator via RJ45 cable. Compact design and easy to install using special installation tabs/brackets.

Operation unit:

The power switch regulates the temperature in power levels 1 to 12. Simple to operate; adjust the temperature setting simply by turning the knob.

Mounting Frame:

- Installation/mounting frame is included with unit.

Coil Carrier Sheet:

- Compact design with induction coils and sensors. Engineered specifically for modular kitchen designs.
- Full Coil (FL): Rectangular in shape. Several large or small pans can be placed on one surface at the same time.

Safety above all:

- RTCSmp electronic temperature control that monitors the state of the induction coils, ceramic glass, heat sink and electronics.
- RTCSmp monitors the energy supply.
- Using a special control, interference noises are prevented when operating multiple cooking zones.
- Limiting the energy supply at peak load.
- Automatic monitoring when not cooking, also when using pans with a sandwich base.
- IR interface with diagnostic system.

Optional Features

- Cable kit: 4m (SKU# 95000246) or 6 m (SKU# 95000247).

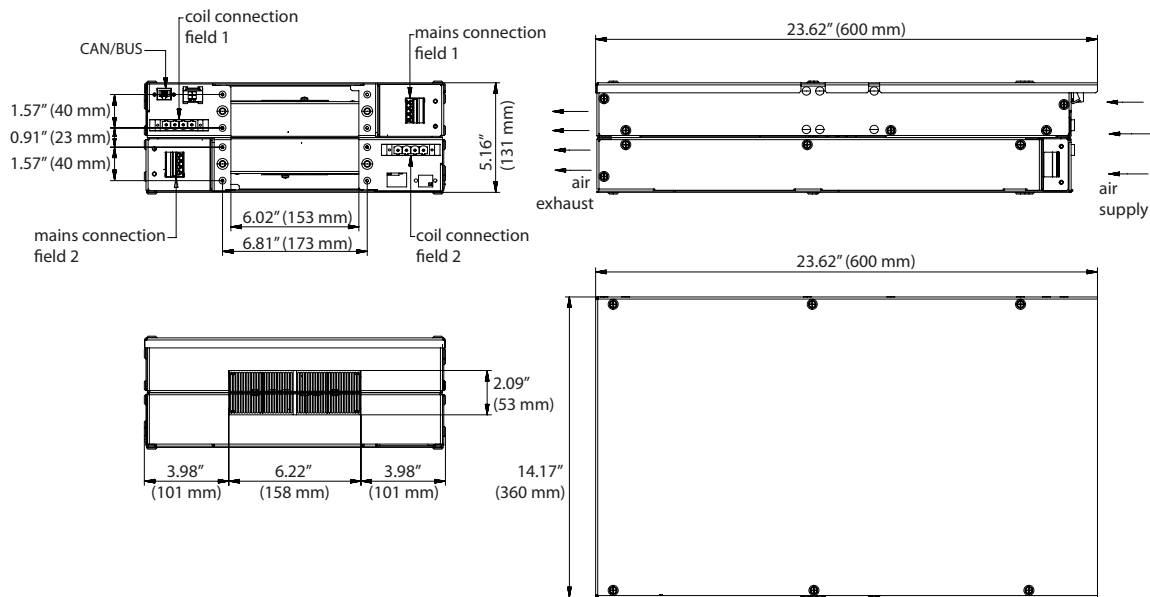


CE models comply with the latest European Norms:
 EN 60335-1, EN 60335-2-36, EN 62233 (EMC/EMV)

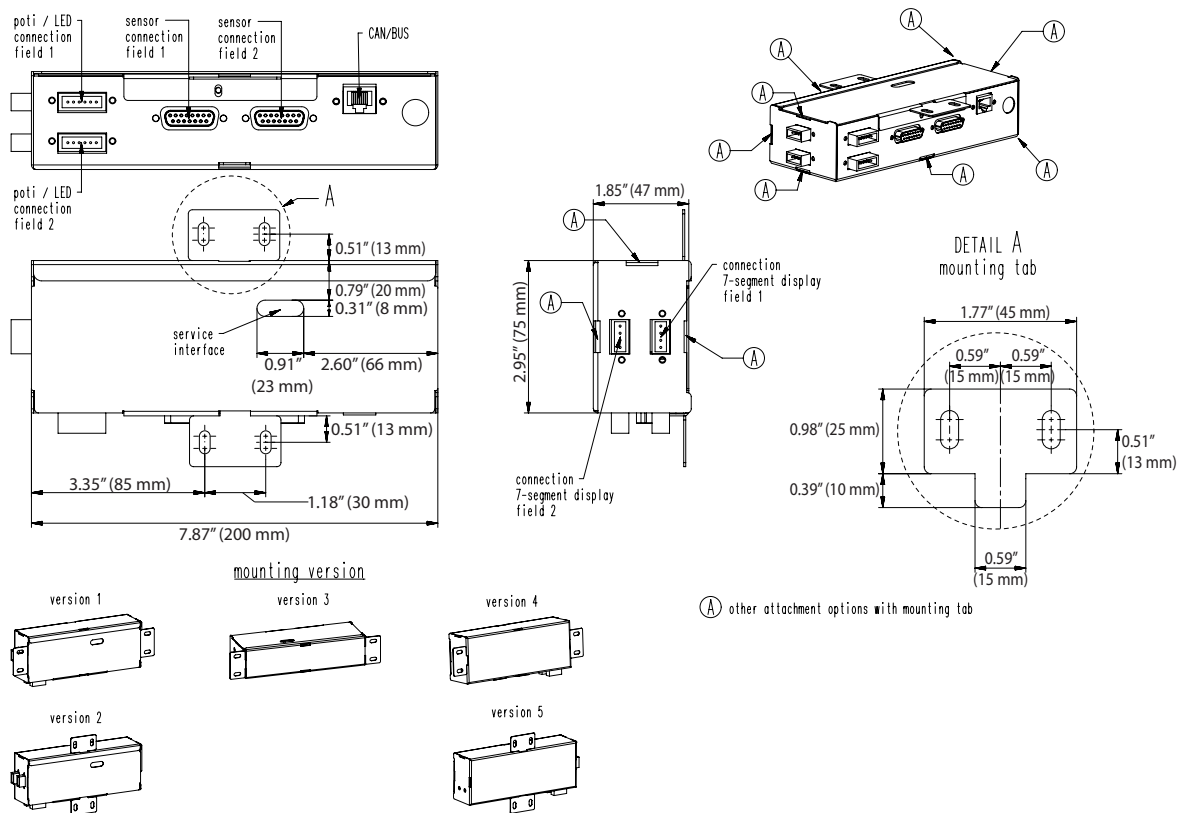
North American models:
 ETL listed in compliance with UL 197, CSA C22.2 No.109, NSF-4
 Complies with FCC part 18, ICES-001

Garland Induction Built-in Unit RTCSmp Module-Line "Four Cooking Zones"

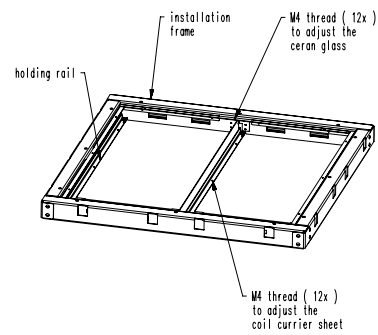
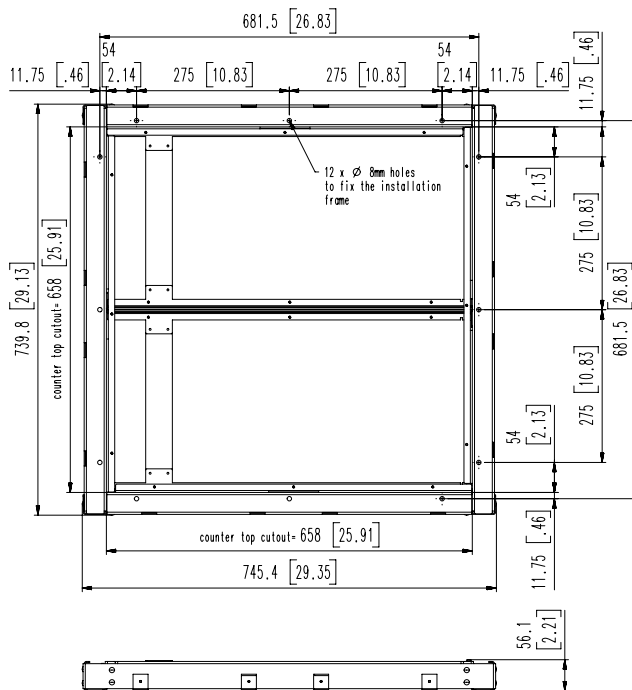
Induction Generator IN/GI-MO 14000FL (Quantity: 2)



Control Unit IN/GI-MO 14000 (Quantity: 2)

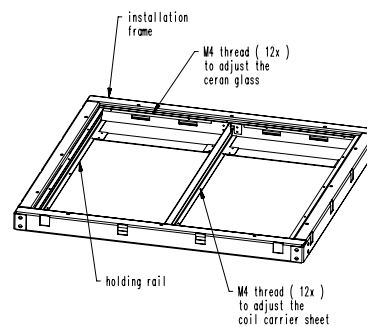
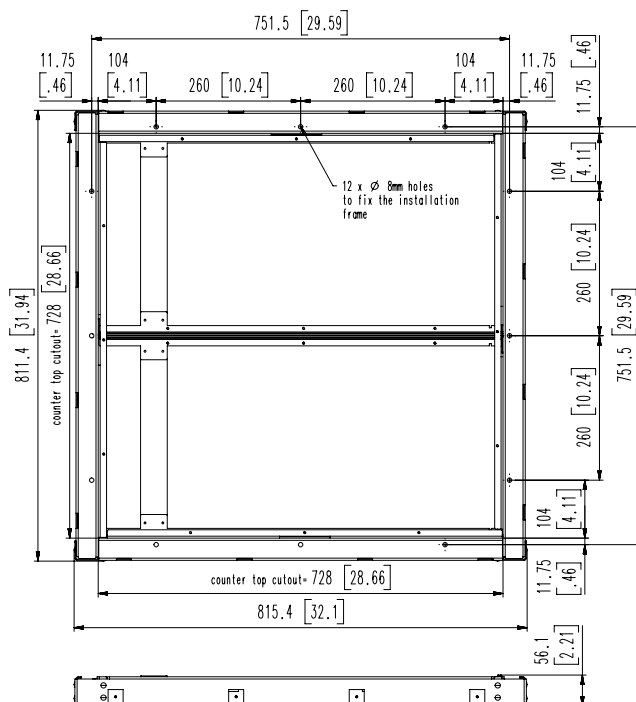


Mounting Frame 650 X 650 mm



measurements in mm and [inch]

Mounting Frame 720 X 720 mm



measurements in mm and [inch]

Model	Ceran Glass Inch (mm)	Mounting Frame Inch (mm)	Number of Coils	Size of Coils Inch (mm)	Power per Cooking Zone	Number of Cooking Zones	Total Rating
GI-MO/QU 28000-650FL	25.60x25.60x0.24 (650 x 650 x 6)	25.60x25.60 (650 x 650)	8	5.71x10.63 (145 x 270)	7.0 kW	4	28.0 kW
GI-MO/QU 28000-720FL	28.35x28.35x0.24 (720 x 720 x 6)	28.35x28.35 (720 x 720)	8	5.91x11.42 (150 x 290)	7.0 kW	4	28.0 kW

Electrical Loading				
Model	Watts	208/60/3	400/50/3	440/50/3
*GI-MO/QU 28000 FL	28000	4 x 22A	4 x 11A	4 x 10A

*Please note electrical loading refers to the amperage per generator each of these models requires two generators and four electrical connections.

Technical Data

Generator housing: 2x23.62x14.17x5.16" (2 x 600 x 360 x 131 mm)
Network impedance (Zmax): 0.25 Ω
Air flow fan: 4238 ft³/h (120 m³/h maximum)
Cut out for air supply: 10.08 sq. in (6500 mm², min)
Cable Kit: 8.2 ft (2.5 m)

Garland/ U.S. Range products are not approved or authorized for home or residential use, but are intended for commercial applications only. Garland/ U.S. Range will not provide service, warranty, maintenance or support of any kind other than in commercial applications.



Please note QR code links to the manual for this product on our website www.garland-group.com

Welbilt reserves the right to make changes to the design or specifications without prior notice.

Garland Commercial Ranges Ltd.
1177 Kamato Road,
Mississauga, Ontario
L4W 1X4 CANADA

General Inquires 1-905-624-0260
USA Sales, Parts and Service 1-800-424-2411
Canadian Sales 1-888-442-7526
Canada or USA Parts/Service 1-800-427-6668

www.garland-group.com
6961
12/18