

# Master Series Even Heat Hot Top Range Attachment

Project \_\_\_\_\_  
Item \_\_\_\_\_  
Quantity \_\_\_\_\_  
CSI Section 11400  
Approved \_\_\_\_\_  
Date \_\_\_\_\_

## Models

- M12S-6
- M12T-6



Model M12S-6  
12" Range Attachment  
With Even Heat Hot Top

## Standard Features

- Stainless steel front and sides
- Stainless steel door
- 6" (152mm) chrome steel adjustable legs
- 7-1/2" (191mm) stainless steel front rail
- Extra heavy even hear cast iron top
- Stainless steel burner box bottom
- Heavy gauge aluminized steel radiation baffle system
- 22,000 BTU (6.44 kW) "H" burner, controlled by hi-lo valve
- Storage base interior of aluminized steel

## Options & Accessories

- Stainless steel common front rail up to 102" (2591mm) wide (two or more units in a battery)
- Stainless steel main back
- End caps and cover (NC, specify)
- Gas regulator 3/4" or 1-1/4"
- Gas shut off valve; 3/4", 1" or 1-1/4" NPT
- Gas flex hose & quick disconnect (3/4", 1" or 1-1/4" NPT x 5') w/ restraining device, please specify
- Set of (4) Polyurethane non-marking swivel casters with front brakes
- 6" (152mm) stainless steel adjustable legs
- Set of 4 deck fasteners (stainless steel flanged feet)
- Dais base, (S model w/o legs)
- Storage base shelf of aluminized or stainless steel
- Stainless steel tubular high shelf, single or double deck
- Stainless steel backguard: 10" (354mm), 17" (432mm) or 33" (838mm) H

## Specifications

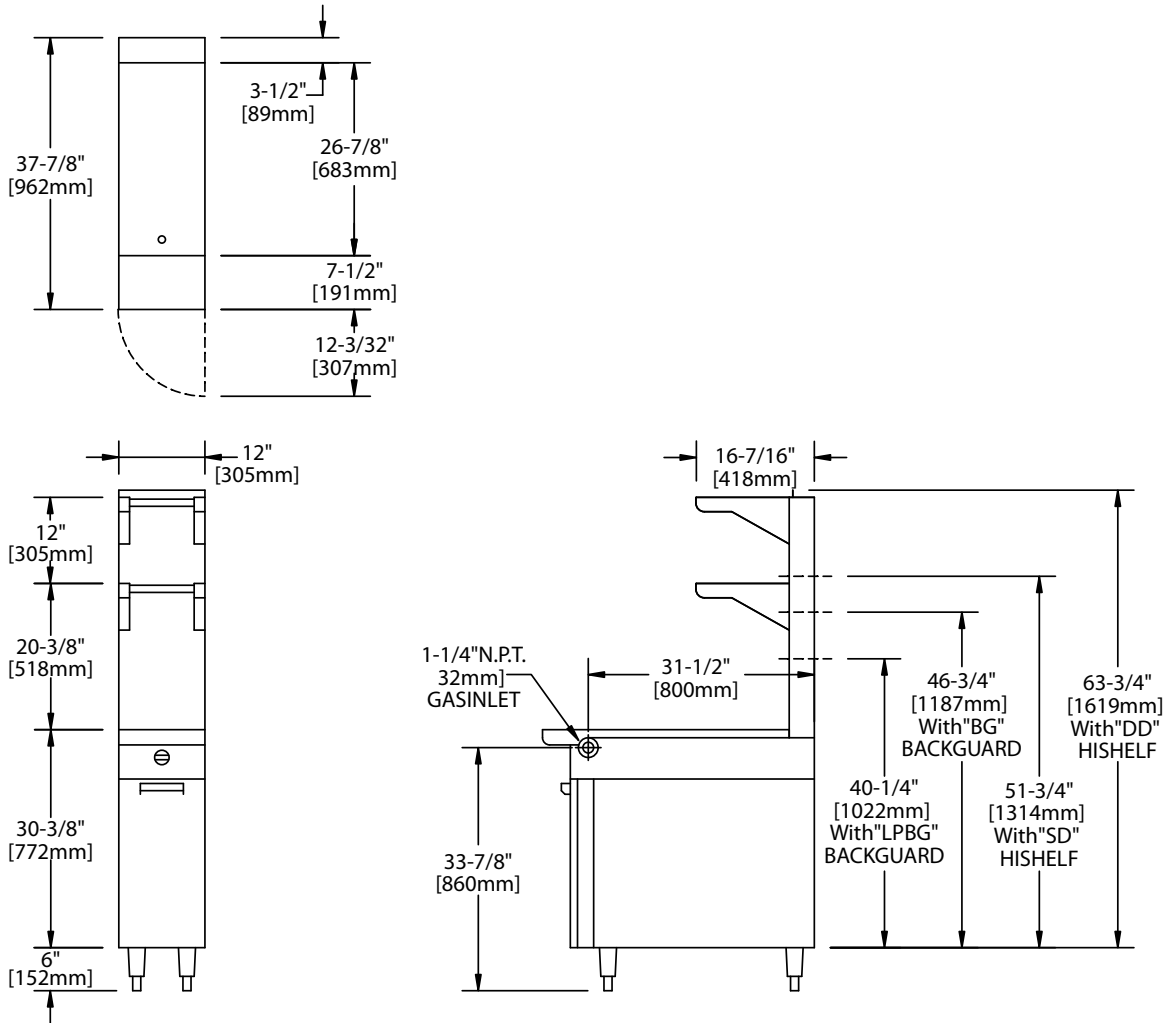
Heavy-duty gas range attachment with storage base, Model M12S-6. One (1) even-heat hot top. 12" (305mm) wide x 38" (965mm) deep, including 7-1/2" (191mm) deep stainless steel front rail. Stainless steel front and sides. 22,000 BTU (6.44 kW) total. Natural or propane gas. Also available with modular top, Model M12T-6. Free standing units only available with flanged feet deck fasteners to anchor unit.

NOTE: Attachments supplied with casters must be installed with an approved restraining device.



Master Series Even Heat Hot Top Range Attachment

# Master Series Even Heat Hot Top Range Attachment



Product	Width: In(mm)	Depth: In(mm)	Height: In(mm) (w/ NSF Legs)	Height: In(mm) (w/o NSF Legs)
M12-6S	12" (305mm)	38" (965mm)	36-3/8" (924mm)	30-3/8" (772mm)
M12-6T	12" (305mm)	38" (965mm)	NA	9-1/2" (241mm)*
M54T	34(864)	38(965)	36-3/8(924 w/stand)	9-1/2(241) w/o stand*

\*Modular top has 1-1/2" seating flanges.

INPUT-BTU/hr (Natural Gas)	M12-6S	kW Equivalent	M12-6T	kW Equivalent
Top Burner	22,000	6.44	22,000	6.44

S=Modular Top Attachment w /storage base, T=Modular Top w/o storage base (optional stand available)

INSTALLATION NOTES			Shipping Wt: (Lb/Kg) - Cu Ft
Combustible Wall Clearances <sup>1</sup>	Entry Clearances	Manifold Operating Pressure	
Sides: 11" (280mm) Back: 6" (152mm)	Crated: 22 1/4" (572mm) Uncrated: 12-1/4" (331mm)	Natural: 6" WC (15mbar) Propane: 10" WC (25mbar)	M12-6S 190/86 - 16 M12-6T 110/5 - 6

<sup>1</sup>NOTE: Installation clearance reductions are applicable only where local codes permit.

Data applies only to North America

Gas input ratings shown here are for installations up to 2,000 ft. (610m) above sea level. Specify altitudes over 2,000 ft. Please specify gas type when ordering.

Garland/U.S. Range products are not approved or authorized for home or residential use, but are intended for commercial applications only. Garland / U.S. Range will not provide service, warranty, maintenance or support of any kind other than in commercial applications

Welbilt reserves the right to make changes to the design or specifications without prior notice.

**Garland Commercial Ranges Ltd.**  
1177 Kamato Road,  
Mississauga, Ontario  
L4W 1X4 CANADA

**General Inquires 1-905-624-0260**  
USA Sales, Parts and Service 1-800-424-2411  
Canadian Sales 1-888-442-7526  
Canada or USA Parts/Service 1-800-427-6668

[www.garland-group.com](http://www.garland-group.com)  
M12-6  
10/18

