

# Cuisine Series Heavy Duty Griddle Top Range

Project \_\_\_\_\_  
Item \_\_\_\_\_  
Quantity \_\_\_\_\_  
CSI Section 11400  
Approved \_\_\_\_\_  
Date \_\_\_\_\_

## Models

- C48-1R
- C48-1S
- C48-1-1R
- C48-1-1S
- C48-1C
- C48-1M
- C48-1-1C
- C48-1-1M



Model C48-1

48" griddle plate valve control or T-stat

## Standard Features

- Griddle top with 1" (25mm) thick steel plate.
- Hi-lo valve control (-1)
- Griddle control, with embedded thermostat sensor bulb (-1-1)
- Low to 450°F (232°C) (-1-1)
- Stainless front and sides
- Stainless steel front rail
- Stainless steel burner box
- 1 1/4" NPT front gas manifold
- Can be connected individually or in a battery
- 7" (178mm) high stainless steel stub back
- 6" (152mm) stainless steel adj. legs
- Porcelain oven interior w/removable porcelain oven bottom
- R model - 4 rack positions
- C model - 3 rack positions
- R model - 1 chrome plated rack
- C model - 3 chrome plated racks
- Fully insulated oven interior
- Safety oven pilot
- Oven thermostat control: 150°-500°F (66°-260°C) (R/C)
- Range base convection oven (C) c/w NEMA 5-15P cord & plug, 1/3 hp motor, 120V 60Hz, 0.6A
- Modular unit (M) can be mounted on Polar Cuisine refrigerated base

## Options & Accessories

- Grooved griddle - (full or 1/2)
- Stainless steel oven interior in lieu of porcelain oven interior - NC
- Single or double deck high shelf or back riser
- Full Height Stand for modular units with legs or casters
- Stainless steel intermediate shelf for cabinet base
- Stainless steel door(s) for cabinet base units
- Stainless steel back
- Continuous plate rail, 48-72" for battery installations
- Gas shut-off valves: 3/4", 1", 1 1/4" NPT (Specify)
- Gas regulator: 3/4", 1", 1 1/4" NPT (Specify)
- Gas flex hose w/ quick disconnect: 3/4", 1", 1 1/4" (Specify)
- Rear Gas Connection: 3/4" NPT
- Set of (4) flanged feet (for fastening unit to the floor)
- Set of (4) 5" polyurethane non-marking swivel casters w/front brakes
- Set of (4) 6" swivel casters, w/front brakes
- Extra oven rack
- Extension for 1/9 pans

## Specifications

Garland Cuisine 48" (1219mm) wide Heavy Duty Range Series. Model \_\_\_\_\_ with total BTU/h rating of \_\_\_\_\_ when used with natural/propane gas. Stainless steel front and sides. 6" (152mm) legs with adjustable feet.

**Ovens** - One piece oven door. Stainless steel oven interior with a heavy-duty, "keep-cool" door handle. Standard oven comes with a thermostat with a temperature range from 150° (low) to 500°F (66°-260°C).

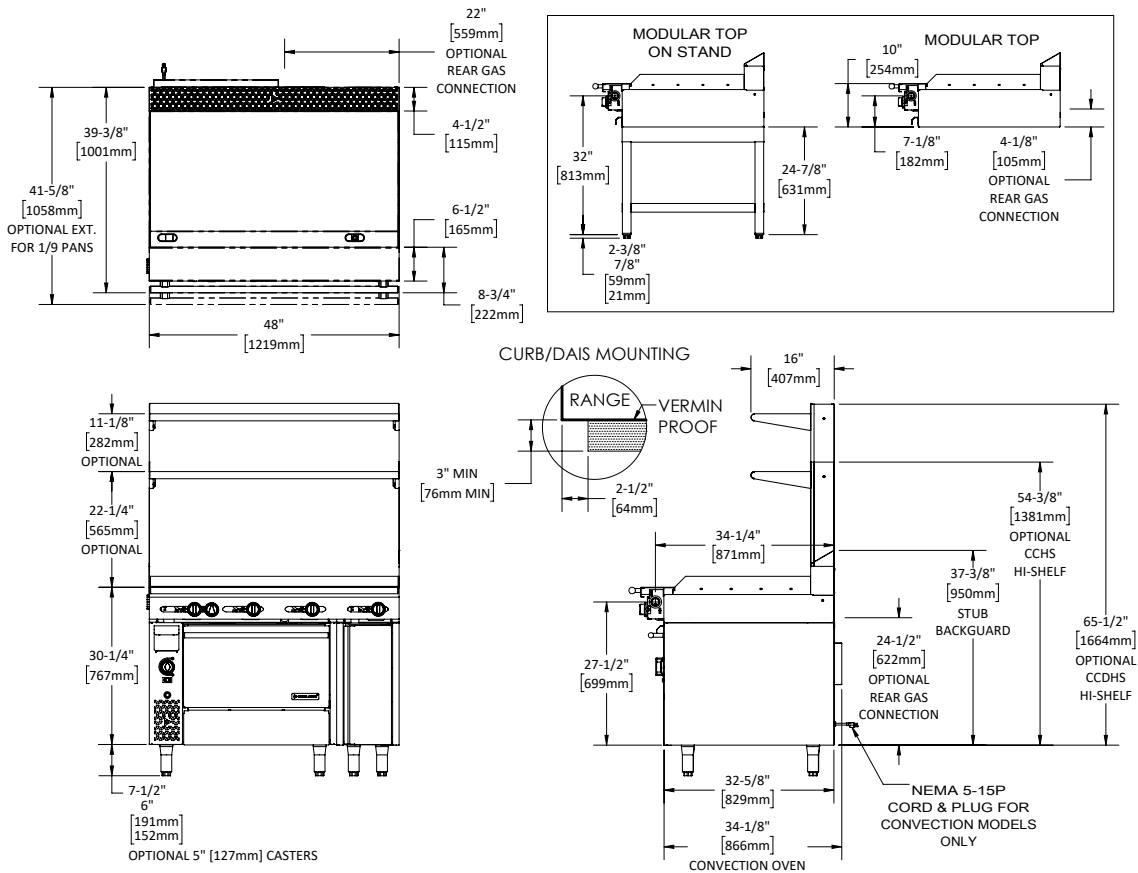
**Griddle Tops** - 1" (25mm) thick steel plate griddle with 3" (76mm) wide grease trough. Burners rated 30,000 BTU/h each. One burner per 12" (305mm) section.

NOTE: Ranges supplied with casters must be installed with an approved restraining device.



Cuisine Series Heavy Duty Griddle Top Range

# Cuisine Series Heavy Duty Griddle Top Range



Model #	Description	Total BTU/h (NAT. Gas)	Total BTU/h Propane	Shipping		Individual Burner Ratings (BTU/h)			
				Cu Ft	lbs/kg	Burner	NAT.	PRO.	
C48-1R	48" Valve Control Griddle w/standard Oven & 12" Cabinet	160,000	155,000	55	1140/517	Griddle	30,000	30,000	
C48-1C*	48" Valve Control Griddle w/convection Oven & 12" Cabinet	157,000	155,000	55	1140/517	Standard Oven	40,000	35,000	
C48-1S	48" Valve Control Griddle w/storage Base & 12" Cabinet	120,000	120,000	55	940/426	Convection Oven	37,000	35,000	
C48-1M	48" Valve Control Griddle Modular Top	120,000	120,000	25	640/290	Interior Dimensions: In (mm)			
C48-1-1R	48" T-stat Griddle w/standard Oven & 12" Cabinet	160,000	155,000	55	1140/517	Product	Height	Width	Depth
C48-1-1C*	48" T-stat Griddle w/convection Oven & 12" Cabinet	157,000	155,000	55	1140/517	Standard Oven	13-1/2(343)	26-1/4 (667)	29 (737)
C48-1-1S	48" T-stat Griddle w/storage Base & 12" Cabinet	120,000	120,000	55	940/426	Convection Oven	13-1/2(343)	26-1/4 (667)	25 (635)
C48-1-1M	48" T-stat Griddle Modular Top	120,000	120,000	25	640/290	Cabinet Base	20-1/2 (521)	32-1/4 (819)	31 (787)
*1/3 hp motor 120V 60 Hz 0.6A c/w NEMA 5-15P cord & plug.							Gas Pressure	NAT.	PRO.
Combusible Wall Clearance							Minimum Supply	7" WC	11" WC
Sides							Manifold Operating Pressure	6" WC	10" WC
Back							Gas Manifold 1-1/4" NPT		
10" (254mm)									
6" (152mm)									

Welbilt reserves the right to make changes to the design or specifications without prior notice.