

# Cuisine Series Heavy Duty Combination Top Range

Project \_\_\_\_\_  
 Item \_\_\_\_\_  
 Quantity \_\_\_\_\_  
 CSI Section 11400  
 Approved \_\_\_\_\_  
 Date \_\_\_\_\_

## Models

- C36-17R                      • C36-17S
- C36-17C                    • C36-17M



Model C36-17C

2 - 40,000 BTU/h open burners  
 with 18" - 37,500 BTU/h front  
 fired hot top

## Standard Features

- 18" - 37,500 BTU/h front fired hot top
- One-piece cast iron grates and bowls over each open top burner
- Stainless steel front and sides
- Stainless steel front rail
- Stainless steel burner box
- 1-1/4" NPT front gas manifold
- Can be installed individually or in a battery
- 7" (178mm) high stainless steel stub back
- 6" (152mm) stainless steel adj. legs
- Porcelain oven interior w/removable porcelain bottom
- R model - 4 rack positions  
C model - 3 rack positions
- R model - 1 chrome plated rack  
C model - 3 chrome plated racks
- Fully insulated oven interior
- Safety oven pilot
- Oven thermostat control: 150°-500°F (66°-260°C) (R/C)
- Range base convection oven (C) c/w NEMA 5-15P cord & plug, 1/3 hp motor, 120V 60Hz, 0.6A
- Modular unit (M) can be mounted on Polar Cuisine refrigerated base

## Options & Accessories

- Stainless steel oven interior in lieu of porcelain oven interior - NC
- Single or double deck high shelf or back riser
- Full height stand for modular unit with legs or casters
- Stainless steel intermediate shelf for cabinet base
- Stainless steel door(s) for cabinet base units
- Stainless steel back
- Continuous plate rail, 48-72" for battery installations
- Gas shut-off valves: 3/4", 1", 1 1/4" NPT (Specify)
- Gas regulator: 3/4", 1", 1-1/4" NPT (Specify)
- Gas flex hose w/ quick disconnect: 3/4", 1", 1 1/4" (Specify)
- Rear Gas Connection: 3/4"
- Set of (4) flanged feet (for fastening unit to the floor)
- Set of (4) 5" polyurethane non-marking swivel casters w/front brakes
- Set of (4) 6" swivel casters, w/front brakes
- Extra oven rack
- Extension for 1/9 pans

## Specifications

Garland Cuisine 36" (914mm) wide Heavy Duty Range Series. Model \_\_\_\_\_ with total BTU/h rating of \_\_\_\_\_ when used with natural/propane gas. Stainless steel front and sides. 6" (152mm) legs with adjustable feet.

**Ovens** - One piece oven door. Stainless steel oven interior with a heavy-duty, "keep-cool" door handle. Standard oven comes with a thermostat with a temperature range from 150° (low) to 500°F (66°-260°C).

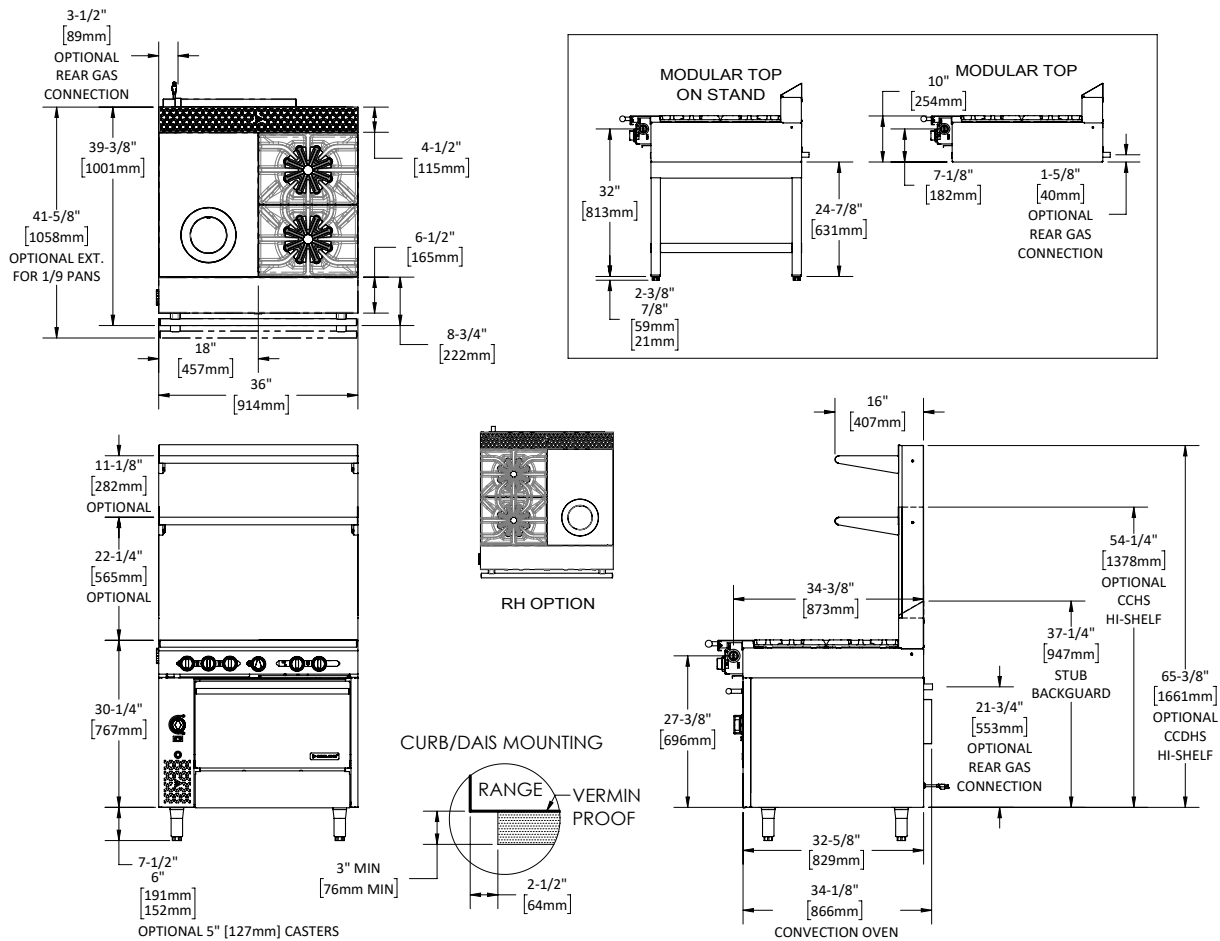
**18" (457mm) Section Front-Fired Hot Tops** -  
 3 - 12,500 each burner with three per section.

NOTE: Ranges supplied with casters must be installed with an approved restraining device.



Cuisine Series Heavy Duty Combination Top Range

# Cuisine Series Heavy Duty Combination Top Range



Model #	Description	Total BTU/h NAT. Gas	Total BTU/h Propane	Shipping		Individual Burner Ratings (BTU/h)							
				Cu Ft	lbs/kg	Burner	NAT.	PRO.	Burner	NAT.	PRO.		
C36-17R	(1) FFHT (Left) & (2) Open Burners/ Standard Oven	157,500	148,500	53	624/283	Open Top	40,000	38,000	Std. Oven	40,000	35,000		
C36-17C	(1) FFHT (Left) & (2) Open Burners/ Convection Oven	154,500	148,500	53	624/283	18" Hot Top	12,500 (3 per 18" Section)		Conv. Oven	37,000	35,000		
C36-17S	(1) FFHT (Left) & (2) Open Burners/ Storage Base	117,500	113,500	53	438/199	Interior Dimensions: In (mm)							
C36-17M	(1) FFHT (Left) & (2) Open Burners/ Modular Top	117,500	113,500	30	355/161								
						Product		Height		Width		Depth	
						Standard Oven		13-1/2(343)		26-1/4 (667)		29 (737)	

FFHT = Front Fired Hot Top

\*1/3 hp motor 120V 60Hz 0.6 Amps c/w Nema 5-15P cord & plug

Combustible Wall Clearance	
Sides	Back
10" (254mm)	6" (152mm)

Gas Pressure	NAT.	PRO.
Minimum Supply	7" WC	11" WC
Manifold Operating Pressure	6" WC	10" WC
Gas Manifold 1-1/4" NP		

Welbilt reserves the right to make changes to the design or specifications without prior notice.

**Garland Commercial Ranges Ltd.**  
1177 Kamato Road,  
Mississauga, Ontario  
L4W 1X4 CANADA

**General Inquires 1-905-624-0260**  
USA Sales, Parts and Service 1-800-424-2411  
Canadian Sales 1-888-442-7526  
Canada or USA Parts/Service 1-800-427-6668

[www.garland-group.com](http://www.garland-group.com)  
7905  
12/21