

# Cuisine Series Heavy Duty Combination Top Ranges

Project \_\_\_\_\_  
Item \_\_\_\_\_  
Quantity \_\_\_\_\_  
CSI Section 11400  
Approved \_\_\_\_\_  
Date \_\_\_\_\_

## Models

- C36-4R
- C36-4S
- C36-4-1R
- C36-4-1S
- C36-4C
- C36-4M
- C36-4-1C
- C36-4-1M



Model C36-4R  
Range with 36" Griddle  
Valve or Thermostat  
Controlled

## Standard Features

- Two 40,000 BTU/h (NG) Garland Starfire open top burners plus 18" griddle
- One-piece cast iron grates and bowls over each open top burner
- 18" Griddle only on the left only with 1" (25mm) thick steel plate
- Hi-lo valve control (-4)
- Griddle control, with embedded thermostat sensor bulb (-4-1)
- Low to 450°F (232°C) (-4-1)
- Stainless steel front and sides
- Stainless steel front rail
- Stainless steel burner box
- 1-1/4" NPT front gas manifold
- Can be installed individually or in a battery
- 7" (178mm) high stainless steel stub back
- 6" (152mm) stainless steel adj. legs
- Porcelain oven interior w/removable porcelain bottom
- R model - 4 rack positions  
C model - 3 rack positions
- R model - 1 chrome plated rack  
C model - 3 chrome plated racks
- Fully insulated oven interior
- Safety oven pilot
- Oven thermostat control: 150°-500°F (66°-260°C) (R/C)
- Range base convection oven (C) c/w NEMA 5-15P cord & plug, 1/3 hp motor, 120V 60Hz, 0.6A
- Modular unit (M) can be mounted on Polar Cuisine refrigerated base

## Options & Accessories

- Stainless steel oven interior in lieu of porcelain oven interior - NC
- Single or double deck high shelf or back riser
- Full height stand for modular unit with legs or casters
- Stainless steel intermediate shelf for cabinet base
- Stainless steel door(s) for cabinet base units
- Stainless steel back
- Continuous plate rail, 48-72" for battery installations
- Gas shut-off valves: 3/4", 1", 1 1/4" NPT (Specify)
- Gas regulator: 3/4", 1", 1-1/4" NPT (Specify)
- Gas flex hose w/ quick disconnect: 3/4", 1", 1 1/4" (Specify)
- Rear Gas Connection: 3/4", 1", 1 1/4" (Specify)
- Set of (4) flanged feet (for fastening unit to the floor)
- Set of (4) 5" polyurethane non-marking swivel casters w/front brakes
- Set of (4) 6" swivel casters, w/front brakes
- Extra oven rack
- Extension for 1/9 pans

## Specifications

Garland Cuisine 36" (914mm) wide Heavy Duty Range Series. Model \_\_\_\_\_ with total BTU/h rating of \_\_\_\_\_ when used with natural/propane gas. Stainless steel front and sides. 6" (152mm) legs with adjustable feet.

**Ovens** - One piece oven door. Porcelain oven interior with a heavy-duty, "keep-cool" door handle. Standard oven comes with a thermostat with a temperature range from 150° (low) to 500°F (66°-260°C).

**Griddle Tops** - 1" (25mm) thick steel plate griddle with 3" (76mm) wide grease trough. Burners rated 30,000 BTU/h each. One burner per 12" (305mm) griddle section.

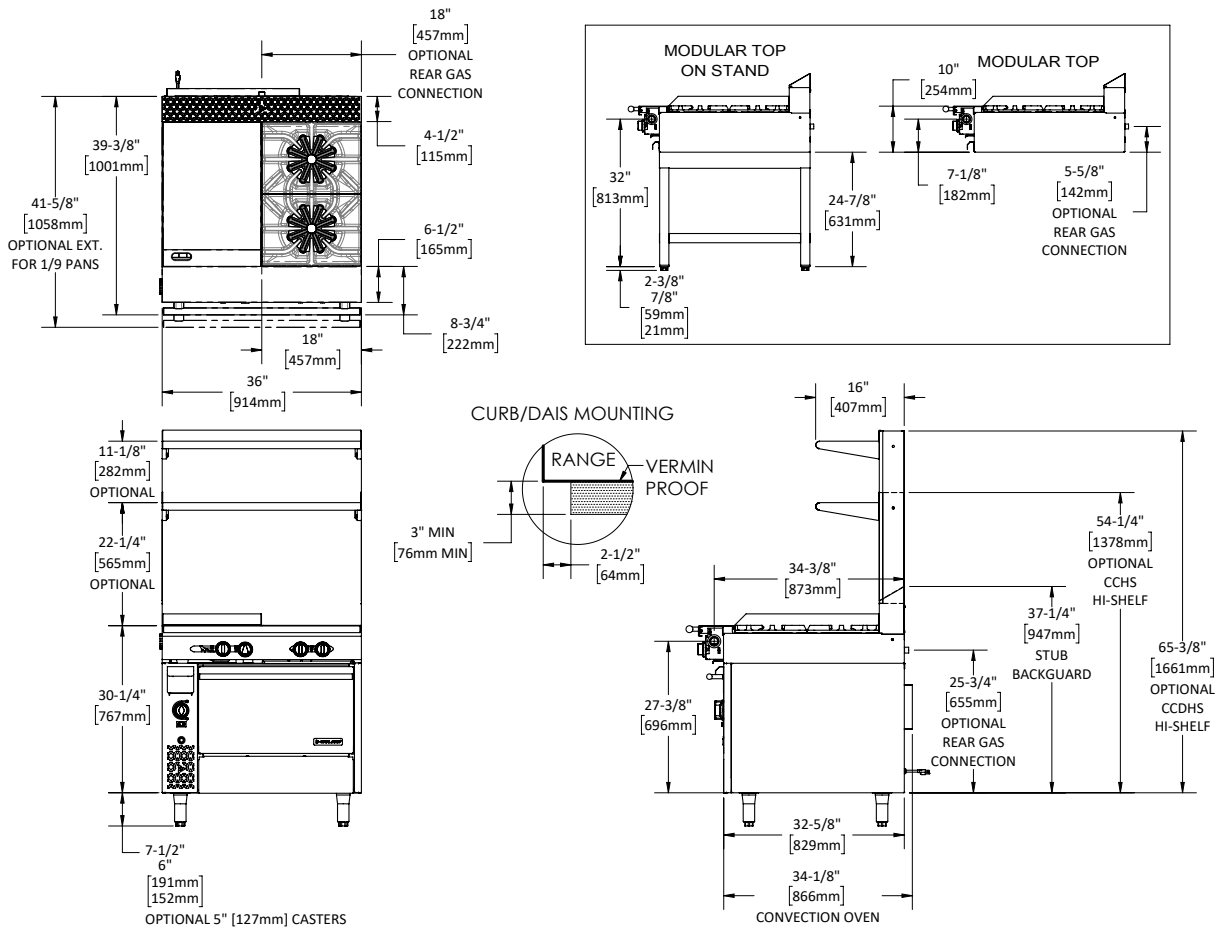
Note: Range-based convection oven models can be located in the middle of a battery, banked back-to-back with other equipment, and can be positioned against a wall.

NOTE: Ranges supplied with casters must be installed with an approved restraining device.



# Cuisine Series Heavy Duty Combination Top Ranges

# Cuisine Series Heavy Duty Combination Top Ranges



Model #	Description	Total BTU/h NAT. Gas	Total BTU/h Propane	Shipping		Individual Burner Ratings (BTU/h)			
				Cu Ft	lbs/kg	Burner	NAT.	PRO.	
C36-4R	36" Manual Valve Control Griddle Top - w/Standard oven	150,000	141,000	53	620/281	Open Top	40,000	38,000	
C36-4C*	36" Manual Valve Control Griddle Top - w/Convection oven	147,000	141,000	53	620/281	Griddle	30,000	30,000	
C36-4S	36" Manual Valve Control Griddle Top - w/Storage Base	110,000	106,000	53	447/203	Standard Oven	40,000	35,000	
C36-4M	36" Manual Valve Control Griddle - w/Modular Top	110,000	106,000	30	392/178	Convection Oven	37,000	35,000	
C36-4-1R	36" Thermostat Control Griddle Top w/Standard Oven	150,000	141,000	53	620/281	Interior Dimensions: In (mm)			
C36-4-1C*	36" Thermostat Control Griddle Top w/Convection Oven	147,000	141,000	53	620/281	Product	Height	Width	Depth
C36-4-1S	36" Thermostat Control Griddle Top w/Storage Base	110,000	106,000	53	447/203	Standard Oven	13-1/2(343)	26-1/4 (667)	29 (737)
C36-4-1M	36" Thermostat Control Griddle Top w/Modular Top	110,000	106,000	30	392/178	Convection Oven	13-1/2(343)	26-1/4 (667)	25 (635)
						Cabinet Base	20-1/2 (521)	32-1/4 (819)	31 (787)
						Gas Pressure	NAT.	PRO.	
						Minimum Supply	7" WC	11" WC	
						Manifold Operating Pressure	6" WC	10" WC	
						Gas Manifold 1-1/4" NPT			

\*120V 60Hz 0.6 A c/w NEMA 5-15P cord & plug

Combustible Wall Clearance	
Sides	Back
10" (254mm)	6" (152mm)

Welbilt reserves the right to make changes to the design or specifications without prior notice.

**Garland Commercial Ranges Ltd.**  
1177 Kamato Road,  
Mississauga, Ontario  
L4W 1X4 CANADA

**General Inquires 1-905-624-0260**  
USA Sales, Parts and Service 1-800-424-2411  
Canadian Sales 1-888-442-7526  
Canada or USA Parts/Service 1-800-427-6668

[www.garland-group.com](http://www.garland-group.com)  
7908  
12/21

