

APPLICATION:

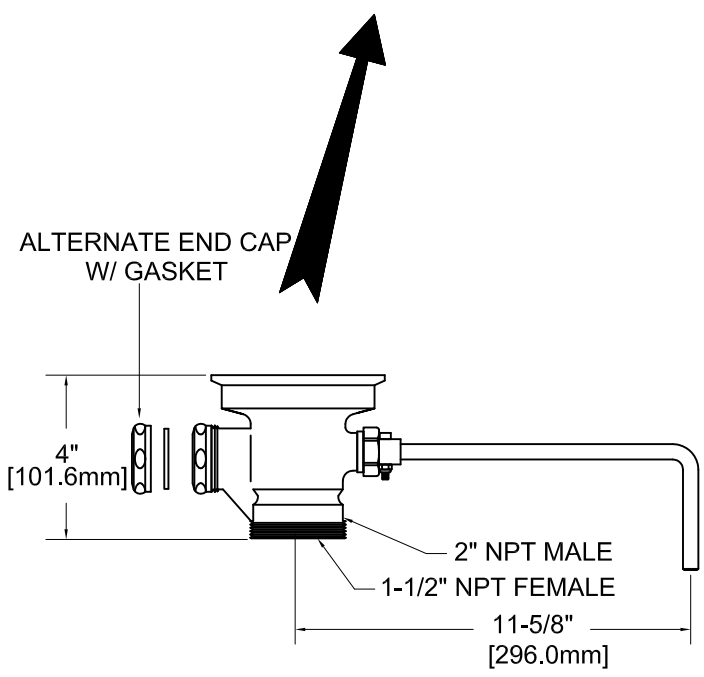
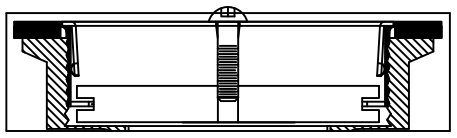
JOB NAME:

QUANTITY: ITEM NO.

PRODUCT NAME:
DrainKing WASTE VALVE

_____ SPECIAL CONFIGURATION
 _____ CHECK BASE MODEL AND OPTIONS

MODEL:
 74045 w/ VANDAL RESISTANT FLAT STRAINER



OPTIONS OR MODIFICATIONS:

SUPPLY LINES (24" OR 36") CIRCLE LENGTH

ADD-ON FAUCET (6", 8", 10", 12", 14", 16") CIRCLE

IN-LINE DUAL CHECK VALVE

HANDLES (CROSS OR WRIST) CIRCLE STYLE

VANDAL RESISTANT KIT

OTHER _____

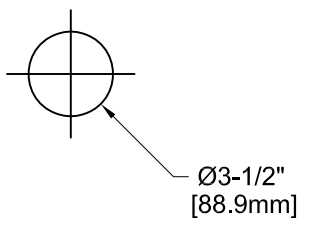
- FEATURES:
- * DUAL TEFLON SEALS
 - * STAINLESS STEEL BALL
 - * CAST RED BRASS BODY
 - * EXTRA SURDY STAINLESS STEEL CLAMPING RING
 - * "CLEAR THROUGH" OPENING, NO NEED TO DISASSEMBLE IF SNAKING IS REQUIRED
 - * INDUSTRY STANDARD "SEALING" ANGLE - FITS FLUSH TO STANDARD STAINLESS STEEL SINKS
 - * VANDAL RESISTANT STAINLESS STEEL FLAT STRAINER
 - * END CAP W/ GASKET INSTALLED
 - * 1/4 TURN FULLY OPENS AND CLOSES VALVE
 - * SUPPLIED WITH:
 ALTERNATE SLIP JOINT NUT & WASHER

DRAIN RATE:
 * 12 GPM

SHIPPING WEIGHT
 * 5.5 LBS

ROUGH-IN:

DRAIN:



FISHER MANUFACTURING COMPANY
 TOLL FREE: 800-421-6162 - FAX: 800-832-8238
 information@fisher-mfg.com - www.fisher-mfg.com

WARNING:
 Proposition 65 requires that we provide you with the following notice: "This product Contains A Chemical Known To The State Of California To Cause Cancer Or Birth Defects Or Other Reproductive Harm."

ANSI/A112.18.1M