

APPLICATION:

PRODUCT NAME:
SINGLE WALL FAUCET

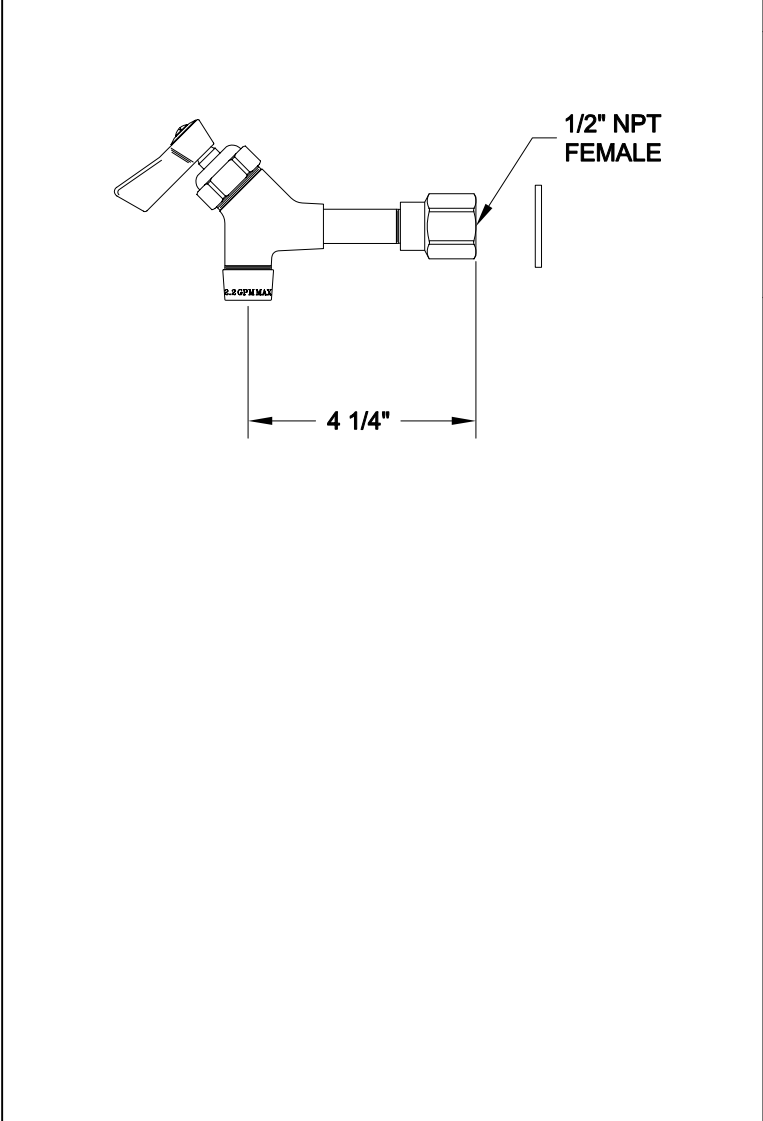
JOB NAME:

SPECIAL CONFIGURATION
 CHECK BASE MODEL AND OPTIONS

QUANTITY:

ITEM NO.

MODEL:
 12882



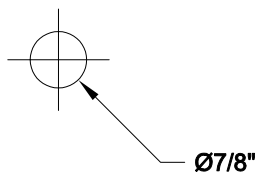
OPTIONS OR MODIFICATIONS:
 SUPPLY LINES (24" OR 36") CIRCLE LENGTH
 NIPPLES
 ELBOWS
 HANDLES (CROSS OR WRIST) CIRCLE STYLE
 VANDAL RESISTANT KIT
 OTHER _____


FEATURES
 * SINGLE WALL CONTROL VALVE
 * SWIVELLING SEAT DISK
 * STEM - RIGHT HAND
 * STAINLESS STEEL SEAT
 * STAINLESS STEEL SEAT SCREW
 * STAINLESS STEEL HANDLE SCREW
 * HOT AND COLD INDEX BUTTON

SYSTEM LIMITS
 * TEMP: 40°F MIN. TO 140°F MAX.
 * PRESSURE: 200 PSI MAX. STATIC
 * 2.20 GPM @ 60 PSI

SHIPPING WEIGHT
 * 1.25 LBS

ROUGH-IN:



 ANSI/A112.18.1M

FISHER
 FISHER MANUFACTURING COMPANY
 TOLL FREE: 800-421-6162 - FAX: 800-832-8238
 information@fisher-mfg.com - www.fisher-mfg.com