



DUKERS
Quality Commercial Refrigeration

Item # _____

Qty # _____

Model # _____

Project # _____



FRYER

FIVE TUBE BURNER

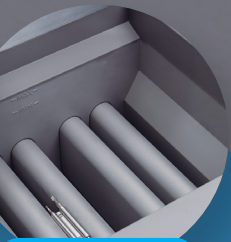
DCF5-LPG / DCF5-NG



Fryer Burner



Fryer Baskets



Oil Tank



PRODUCT DESCRIPTION

- Five highly efficient red tube, cast iron burners create a large heat-transfer area for reliable, even heat distribution. Our durable temperature probe senses temperature changes and activates a quick burner response.
- The temperature for the DCF5-LPG/DCF5-NG from 200°F (93°C) to 400°F (204°C). Includes Millivolt safety control system.
- Every inch of the frypot and cold zone can be cleaned and wiped down by hand.
- The large cold zone and forward sloping bottom help collect and remove sediment from the frypot to safeguard oil quality and support routine frypot cleaning.



HIGH QUALITY STAINLESS STEEL & ROBUST DESIGN

* All measures are presented in Inches

| FRYER MODEL | DIMENSION | | |
|-------------|-----------|-----------|--------|
| | Width | Depth | Height |
| DCF5-NG | 21 in | 32 7/8 in | 45 in |
| DCF5-LPG | 21 in | 32 7/8 in | 45 in |



Los Angeles | San Francisco | Dallas
Houston | Florida | Chicago | New Jersey

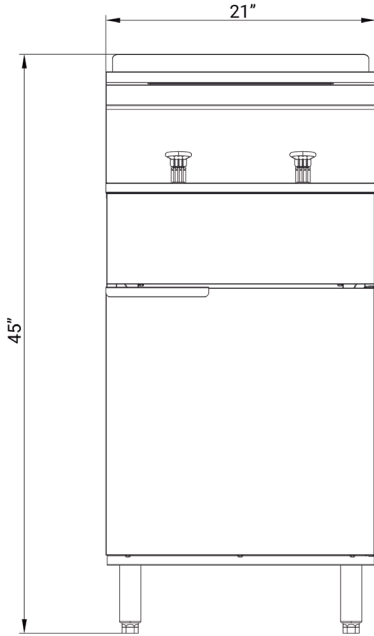
1-800-931-8628

@ info@dukersusa.com

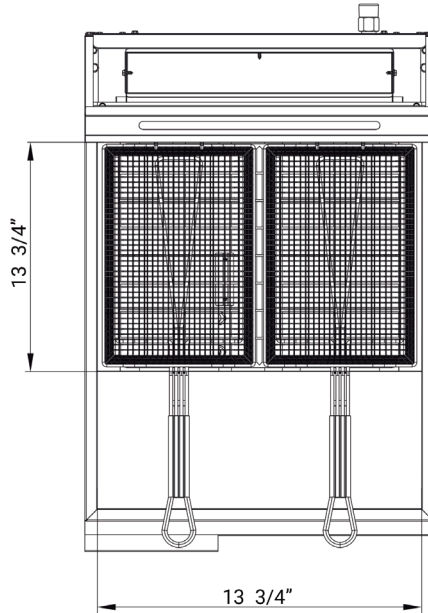
www.DukersUSA.com

DETAILS & SPECIFICATIONS

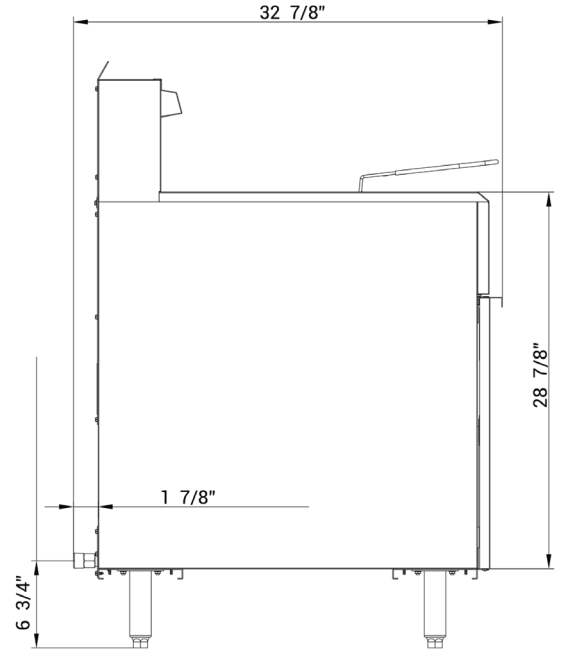
FRYER DCF5-LPG / DCF5-NG



Front View



Top View



Side View

| DCF5-LPG | |
|-------------------|---------------|
| GAS SOURCE | LPG |
| WORK AREA | 19.49x13.98in |
| BURNER | 5 count |
| SINGLE BURNER | 30000 BTU/H |
| COMBINED | 150000 BTU/H |
| OIL TANK CAPACITY | 70 lbs |
| GAS PRESSURE | 10 "WC |
| NOZZEL | 52# |
| CONTAINER FITMENT | 92 |

| DCF5-NG | |
|-------------------|---------------|
| GAS SOURCE | NG |
| WORK AREA | 19.49x13.98in |
| BURNER | 5 count |
| SINGLE BURNER | 30000 BTU/H |
| COMBINED | 150000 BTU/H |
| OIL TANK CAPACITY | 70 lbs |
| GAS PRESSURE | 4 "WC |
| NOZZEL | 39# |
| CONTAINER FITMENT | 92 |

| Model | Packaging Dimensions (inches) | | | Net Weight (lbs) | Ship Weight (lbs) |
|----------|-------------------------------|---------|---------|------------------|-------------------|
| | W | D | H | | |
| DCF5-LPG | 23 3/8" | 35 3/8" | 37 5/8" | 220.46 | 246.92 |
| DCF5-NG | 23 3/8" | 35 3/8" | 37 5/8" | 220.46 | 246.92 |



Los Angeles | San Francisco | Dallas
Houston | Florida | Chicago | New Jersey

1-800-931-8628

@ info@dukersusa.com

www.DukersUSA.com