

# 8100-EFP

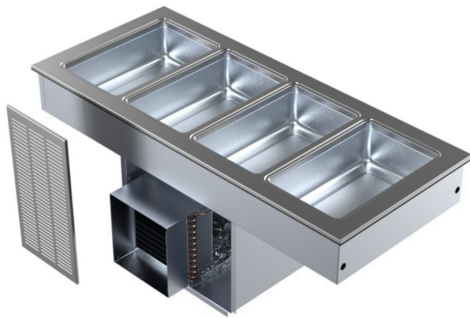
Drop-In Self-Contained LiquiTec™ Refrigerated Cold Pans

Project \_\_\_\_\_  
 Item \_\_\_\_\_  
 Quantity \_\_\_\_\_  
 CSI Section 11400  
 Approved \_\_\_\_\_  
 Date \_\_\_\_\_

8100-EFP: Drop-In Self-Contained LiquiTec™ Refrigerated Cold Pans

## Models

- 8118-EFP One 12" x 20" pan capacity
- 8132-EFP Two 12" x 20" pan capacity
- 8145-EFP Three 12" x 20" pan capacity
- 8159-EFP Four 12" x 20" pan capacity
- 8172-EFP Five 12" x 20" pan capacity
- 8186-EFP Six 12" x 20" pan capacity



8159-EFP

## Standard Features

- Stainless steel top construction
- LiquiTec® cold pans with eutectic fluid technology
- Flush mounted 12" x 20" individual stainless steel wells
- Standard 1/2" stainless steel drains with manifold
- High density environmentally friendly, Kyoto Protocol Compliant, Non ODP (Ozone Depletion Potential), Non GWP (Global Warming Potential) polyurethane foam insulation throughout unit
- Electronic temperature control and expansion valve standard
- Non-marring press fit top gasket
- Environmentally friendly R290 refrigerant
- 8' cord and plug
- Stainless steel louver for field installation
- 1 year parts and labor standard warranty

## Options & Accessories

- Single or double service flip-up sneezeguards
- Relocate compressor
- Drain valve
- 220V/50 cycle electrical available in 404a custom sku# version

\* Inclusion of this option will alter electrical specifications of the unit

## Specifications

LiquiTec™ Cold Pans with Eutectic Fluid technology allows food in food pans to be flush with top of counter. Cold pan meets NSF standard 7; and can be dropped into Delfield Mark 7, Shelleyglas® or Shelleysteel™ counters or existing counters.

**Top:** is one-piece stainless steel, with 0.62" (1.6cm) overhang around perimeter and die stamped 19.87" x 11.87" (50cm x 30cm) openings with depressed edges. Formed well below each opening is 6.25" (16cm) deep with 0.5" (1.3cm) stainless steel drain and copper manifold. Each well, flush with the top, for flush mount pans to accommodate 12" x 20" (30cm x 51cm) pans 4" (10cm) or 6" (15cm) deep supplied by others. Product temperatures of 33°F (1°C) to 41°F (5°C) are maintained at 86°F (30°C) ambient room temperature, meeting NSF 7 requirements.

**Sides and bottom:** are insulated with high-density environmentally friendly, Kyoto Protocol Compliant, Non ODP (Ozone Depletion Potential), Non GWP (Global Warming Potential) closed-cell polyurethane. Exterior housing is galvanized steel.

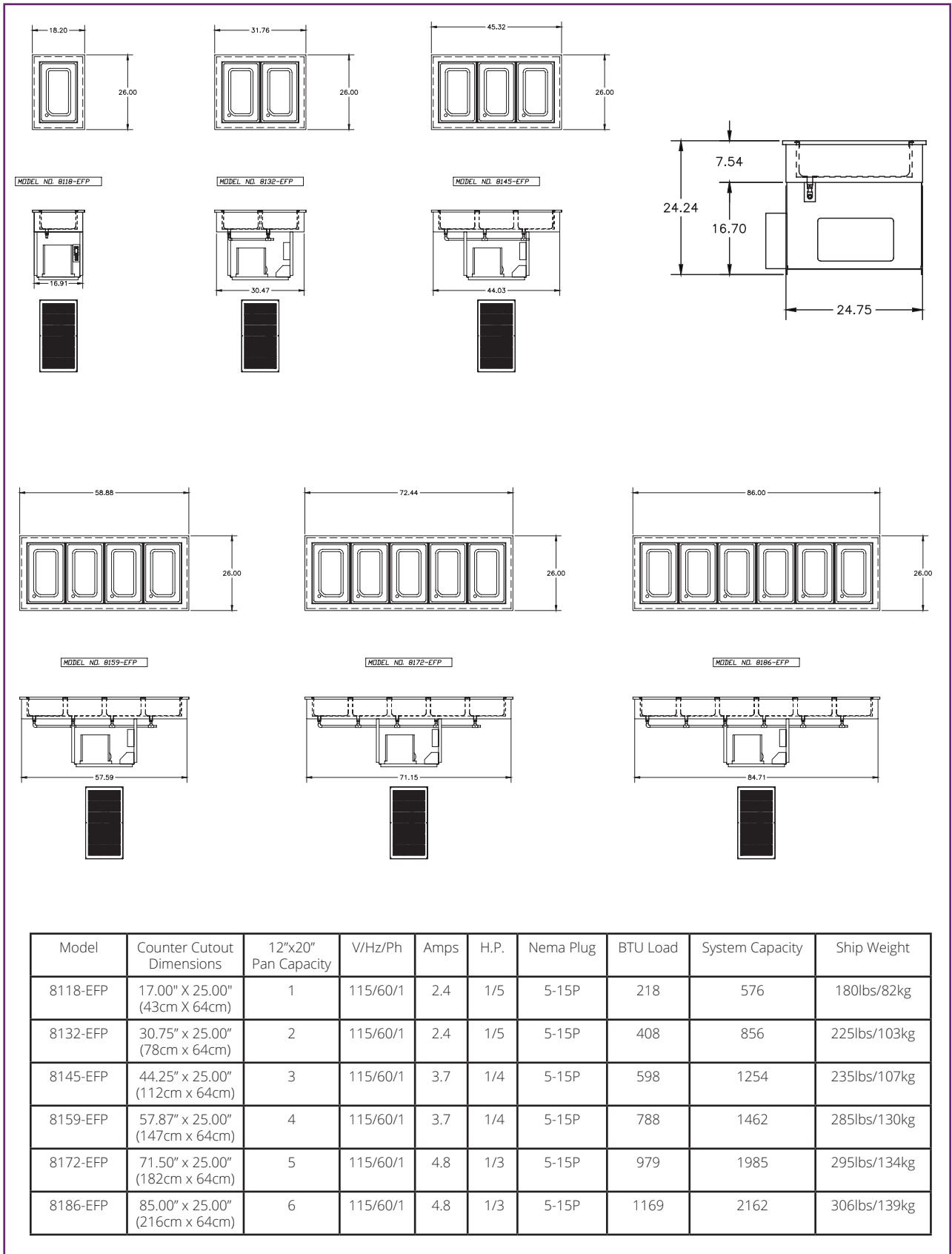
**Refrigeration:** system uses R290 refrigerant. Eutectic fluid is used as the heat transfer medium. Condensing unit is suspended below the cold pan on a steel frame. Electronic temperature control.

A stainless steel louver is provided for field installation; cutout dimension is 12" x 23.5" (32cm x 60cm).

**Electrical system** is 115V/60Hz/1Ph with NEMA 5-15P plug.



# 8100-EFP Drop-In Self-Contained LiquiTec™ Refrigerated Cold Pans



Welbilt reserves the right to make changes to the design or specifications without prior notice.