



TILTING OYSTER COOKER WITH ELECTRIC BOILER BASE



SPECIFICATIONS:

Shall be a Crown Model _____, consisting of two, three or four direct steam connected steam, tilting oyster cookers. Oyster cookers shall be constructed of type 316 stainless steel inner and outer shell with a #4 finish, one piece welded construction. Each cooker shall be equipped with a tilt handle and heat resistant knob, allowing the cooker to be tilted forward 90° for complete emptying. The stainless steel mounting legs shall have the steam supply and condensate within the legs and the right leg fitted with the steam control valve for the oyster cooker. Oyster cookers are standard with a stainless steel lift off cover.

The oyster cookers are mounted on a cabinet base with full perimeter angle frame, reinforced counter, spillage sink complete with drain and drain screen, boiler mountings, electric boiler with controls, hinged doors with magnetic catches, removable side panels with 6" (152 mm) stainless steel legs with 4 adjustable flanged feet for securing to the floor. All #4 finish stainless steel exterior. Steam manifold concealed within cabinet fitted with steam trap and safety relief valve. Unit is standard with automatic boiler blowdown, CSD-1 boiler controls, nickel plated boiler, and split water line.

SEE REVERSE SIDE OF SPEC SHEET FOR WATER TREATMENT SYSTEM STATEMENTS

MODEL	CAPACITIES (PER KETTLE)		
	KW	US Quart	Liters
OB-2-2-27-E	24	2 x 2	2 x 2
OB-3-2-40-E	24	3 x 2	2 x 3
OB-4-2-54-E	24	4 x 2	2 x 4

OPERATION SHALL BE BY:

Electrically heated steam boiler, operating at 9-11 psi (62-76 kPa). Electrical rated at:

- 24 kW, 1 and 3 phase (Standard)
- 36 kW, 3 phase (Optional)
- 42 kW, 3 phase
- 48 kW, 3 phase, 240 VAC minimum

The steam boiler shall be equipped for operation on:

- 208 VAC, 1 Phase, 50/60 Hz
- 208 VAC, 3 Phase, 50/60 Hz
- 220 VAC, 1 Phase, 50/60 Hz
- 220 VAC, 3 Phase, 50/60 Hz
- 240 VAC, 1 Phase, 50/60 Hz
- 240 VAC, 3 Phase, 50/60 Hz
- 415/240 VAC, 3 Phase, 50/60 Hz, 4 wire
- 380/220 VAC, 3 Phase, 50/60 Hz, 4 wire

STANDARD FEATURES:

- Water Treatment System
- Automatic water level control.
- Pressure gauge.
- Pressure control with secondary safety pressure control.
- Safety relief valve.
- 316 Stainless steel inner and outer shell on TOC Kettles
- Steam control valve in right leg
- Split water line

OPTIONAL ITEMS AT EXTRA COST:

- Stainless steel frame. (SSF-)
- Stainless steel cabinet back. (SSB-)
- 380 VAC, 3 Phase, 50/60 Hz
- 415 VAC, 3 Phase, 50/60 Hz
- 480 VAC, 3 Phase, 50/60 Hz.
- 575 or 600 VAC, 3 Phase, 60 Hz (EBVS-3)
- Correctional package
- Steam take-off kit (STOK)

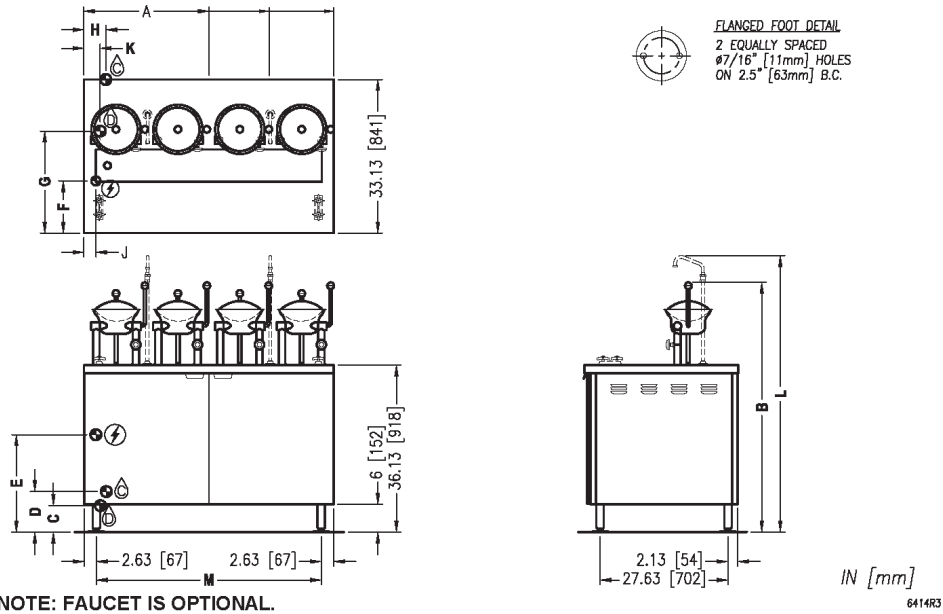
ACCESSORIES:

- Water in "Y" strainer (Condenser Feed)
- Dual pantry deck mount faucet with swing spout (DMF-12R-DJ)
- Nylon cutting board. (NCB-)

Job _____
Item# _____



Models: OB-2-2-27-E OB-3-2-40-E OB-4-2-54-E



SERVICE CONNECTIONS

- ELECTRICAL CONNECTION: Field wiring electrical connection to be as specified on data plate.
- DRAIN: 2"IPS piped to open floor drain. No Solid Connection.
- COLD WATER: 3/8" O.D. tubing at 25-50 PSI(170-345 kPa)

DIMENSIONS

Model	Units	A	B	C	D	E	F	G	H	J	K	L	M
OB-2-2-27-E	in (mm)	27" (686)											21.63" (549)
OB-3-2-40-E	in (mm)	40" (1016)	54" (1372)	5.75" (146)	8.75" (222)	21" (533)	11.25" (285)	22" (559)	4.75" (121)	2.5" (63.5)	3.5" (89)	59.75" (1518)	34.63" (879)
OB-4-2-54-E	in (mm)	54" (1372)											48.63" (1235)

ELECTRICAL CHARACTERISTICS

AMPS PER LINE							
MODEL	kW	PHASE	208V	220V	380V	415V	480V
OB	24	3	66.6	63	36.5	33.4	28.9
	36	3	99.9	94.5	54.7	50.1	43.3
	42	3	116.6	110.2	63.8	58.4	50.5

WATER QUALITY STATEMENT

Water is the essential ingredient in steam equipment, water quality is the major factor affecting the performance of your appliance. Crown Steam Group offers a Comprehensive Water Treatment System which exceeds our minimum water requirements. Proof of installation and proper cartridges replacement is required for warranty coverage. Water supply to Crown Steam Group steamers must be within these guidelines.

- Total dissolved solids.....Less than 60 PPM
- Total alkalinityLess than 20 PPM
- Silica.....Less than 13 PPM
- ChlorineLess than 1.5 PPM
- pH Factor6.8 - 7.3

Water which does not meet these standards should be treated with the installation of Middleby's Water Treatment System. Call 919-762-1000 if you have questions concerning your water meeting these parameters.

*Failure or malfunction of this appliance due to poor water quality is not covered under warranty.
Reference www.crownsteamgroup.com for complete warranty details and instructions.

**INTENDED FOR COMMERCIAL USE ONLY.
NOT FOR HOUSEHOLD USE.**



70 Oakdale Road, Toronto ON, Canada M3N 1V9
(919) 762-1000 www.crownsteamgroup.com