



FULL JACKET ELECTRIC STEAM TILTING KETTLE



SPECIFICATIONS:

Shall be a Crown Model _____, self-generating, electric tilting full jacket kettle, low height. A double wall kettle interior shall form a steam jacket around the kettle. The jacket enclosure shall contain distilled water which is factory sealed. The bottom of the kettle shall be of hemispherical design for superior heat circulation.

The console shall be drip proof, stainless steel clad and shall be supported on all welded 1-5/8" (41 mm) diameter stainless steel pipe frame and the legs fitted with 4 hole adjustable feet for securing to the floor.

The kettle shall pivot on trunnion connected to the tilt mechanism and the out-bore bearing connected to the frame and shall permit the kettle to tilt forward a full 90° for complete emptying. The tilt mechanism shall be self locking for positive stop action.

Construction shall be all welded #4 finish stainless steel, type 304. The kettle liner shall be standard with type 316 for high acid content cooking. The controls shall be integrally mounted and shall include a power switch, thermostat, pilot light, low water light, vacuum/pressure gauge, safety relief valve, and low water shut off.

The kettle shall be standard with removable elements. The kettle shall operate in a temperature range of 165°F to 285°F (74°C to 140°C) at a maximum pressure of 50 psi (345 kPa).

MODEL	CAPACITY	
ELT-20F	20 Gallon	76 Liter
ELT-30F	30 Gallon	114 Liter
ELT-40F	40 Gallon	152 Liter
ELT-60F	60 Gallon	227 Liter

OPERATION SHALL BE BY:

Electrically, self-generating closed steam system operating at 50 psi equipped for operation on:

- ☐ 08 VAC, 1 phase, 50/60 Hz. (12 to 18 kW only)
- ☐ 208 VAC, 3 phase, 50/60 Hz.
- ☐ 220 VAC, 1 phase, 50/60 Hz. (12 to 18 kW only)
- ☐ 220 VAC, 3 phase, 50/60 Hz.
- ☐ 240 VAC, 1 phase, 50/60 Hz. (12 to 18 kW only)
- ☐ 240 VAC, 3 phase, 50/60 Hz.
- ☐ 380/220 VAC, 3 phase, 4 wire, 50/60 Hz.
- ☐ 415/240 VAC, 3 phase, 4 wire, 50/60 Hz.

OPTIONAL ITEMS AT EXTRA COST:

- ☐ 380 VAC, 3 phase, 50/60 Hz.
- ☐ 415 VAC, 3 phase, 50/60 Hz.
- ☐ 480 VAC, 3 phase, 50/60 Hz.
- ☐ 600 VAC, 3 phase, 50/60 Hz.
- ☐ 24 kW on 40, 60 gallon
- ☐ 33 kW on 30, 60 gallon
- ☐ Spring assist hinged stainless steel cover (CH-)
- ☐ Etched gallon markings (GM-)
- ☐ Etched litre markings (LM-)
- ☐ Correctional package
- ☐ Solid State Thermostat (SST-E)
- ☐ 2" (50 mm) draw-off valve (TVT-2)
- ☐ 3" (76 mm) draw-off valve (TVT-3)

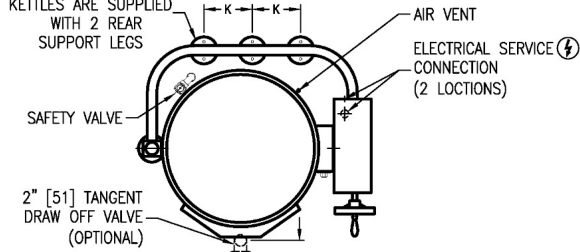
ACCESSORIES:

- ☐ Single pantry faucet with an 18" swing spout (SF-18).
- ☐ Double pantry faucet with an 18" swing spout (DF-18).
- ☐ Single pantry faucet with 18" swing spout and 68" spray hose and bracket (SP-RSH-18)
- ☐ Double pantry faucet with 18" swing spout and 68" spray hose and bracket (DP-RSH-18)
- ☐ One piece lift off stainless steel cover (C-).
- ☐ Triple basket assembly.
- ☐ Perforated strainer for draw off (TPS-).
- ☐ Solid disc for draw off (TSS-).
- ☐ Contoured measuring strip.
- ☐ Strainer hook (SH-)
- ☐ Pan support (PC-4).
- ☐ Pour lip strainer (TKS-).
- ☐ Draw-off valve hose kit (DVHK-).
- ☐ Calibrated thermostat dial, "F"
- ☐ Calibrated thermostat dial, "C"

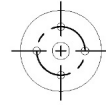


Models: ☐ ELT-20F ☐ ELT-25F ☐ ELT-30F ☐ ELT-40F ☐ ELT-60F ☐ ELT-80F ☐ ELT-100F

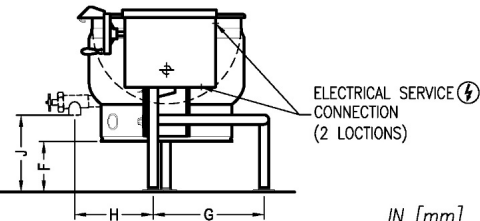
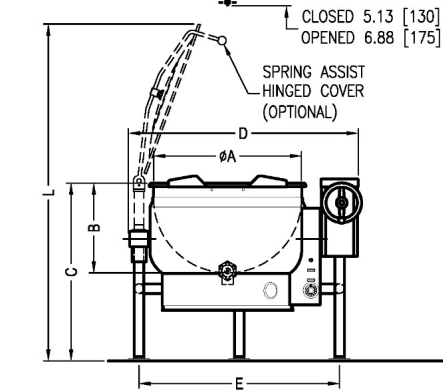
NOTE: [30F,40F,60F]
KETTLES ARE SUPPLIED
WITH 2 REAR
SUPPORT LEGS



MODEL	SHIPPING WEIGHT	MINIMUM CLEARANCE	
ELT-20F	340 lbs. [154 kg]	SIDES	0" [0 mm]
ELT-30F	402 lbs. [182 kg]	BACK	0" [0 mm]
ELT-40F	500 lbs. [227 kg]		
ELT-60F	610 lbs. [277 kg]		



FLANGED FEET DETAIL
4 EQUALLY SPACED
Ø7/16" [11mm] HOLES
ON 2.835" [72mm] B.C.



IN [mm]
68407

SERVICE CONNECTIONS

⚡ – ELECTRICAL CONNECTION : To be as specified on data plate.

DIMENSIONS

MODEL	CAPACITY	UNITS	A	B	C	D	E	F	G	H	J	K	L
ELT-20F	20 gallons (76 liters)	in (mm)	26" (660)	15.75" (400)	31.25" (794)	40.38" (1026)	35.25" (895)	8.88" (225)	19.5" (495)	13.88" (352)	13.25" (337)	N/A	62" (1575)
ELT-30F	30 gallons (114 liters)	in (mm)	29.5" (749)	17.5" (445)	33.5" (851)	43.88" (1114)	38.75" (984)	9.63" (245)	22.25" (565)	15.38" (391)	13.5" (343)	10.5" (267)	67.5" (1715)
ELT-40F	40 gallons (152 liters)	in (mm)	33" (838)	19.25" (489)	36.25" (921)	47.13" (1197)	42" (1067)	11.25" (286)	23.75" (603)	17.13" (435)	14.5" (368)	12" (305)	73.75" (1873)
ELT-60F	60 gallons (227 liters)	in (mm)	35.5" (902)	20.5" (521)	39.25" (997)	50" (1270)	44.63" (1133)	12" (305)	25.25" (641)	17.88" (454)	16.5" (419)	13.5" (343)	79.5" (2019)

ELECTRICAL CHARACTERISTICS

AVAILABLE kW		
MODEL	STAN- DARD	OP- TIONAL
ELT-20F	18	N/A
ELT-30F	18	24 or 33
ELT-40F	18	24 or 33
ELT-60F	24	33

AMPS PER LINE								
kW	PHASE	208V	220V	240V	380V	415V	480V	600V
18	1	86.5	81.8	75.0	N/A	N/A	N/A	N/A
	3	50.0	47.2	43.3	27.3	25.0	21.7	21.7
24	3	66.6	63.0	57.7	36.5	33.4	28.9	23.1
33	3	91.6	86.6	79.4	50.1	45.9	39.7	31.8

**INTENDED FOR COMMERCIAL USE ONLY.
NOT FOR HOUSEHOLD USE.**



70 Oakdale Road, Toronto ON, Canada M3N 1V9
(919) 762-1000 www.crownsteam.com