

# MIXER KETTLE, DIRECT STEAM LEG MOUNTED CONSOLE TYPE TILTING, 2/3 STEAM JACKETED

Project \_\_\_\_\_  
 Item \_\_\_\_\_  
 Quantity \_\_\_\_\_  
 FCSI Section 11400 \_\_\_\_\_  
 Approved \_\_\_\_\_  
 Date \_\_\_\_\_

## Models

- MKDL-40-T    • MKDL-100-T
- MKDL-60-T    • MKDL-125-T
- MKDL-80-T    • MKDL-150-T



Shown with optional Power Tilt  
& Product Temperature Control

## Standard Features

- 3 HorsePower Hydraulic powered Agitator, Scraper and Bridge Lift
- Infinitely Variable Scraper Speed Control from 0 to 40 rpm
- Infinitely Variable Ratio between Scraper and Agitator: Agitator rotates from 0 to 8 times the speed of the Scraper
- Removable (without tools) Nylon Blades scrape the entire Jacketed Surface
- Safety Device prevents high speed Starts
- Mixing stops when bridge is lifted - includes safety cover and screen
- Agitator and Scraper are Bayonet Mounted for easy removal
- Factory installed Chrome-Plated Steam Control Kit
- Tilt Mechanism of roller bearings and case hardened self-locking worm and segment gear
- Power Tilt standard on 150 gallon model
- 3" diameter Quick Opening Butterfly Valve
- Hot and Cold Water Faucet
- Condensate Valve with Insulated Handle
- 50 psi Steam Jacket Rating on 40 - 100 gallon models
- 35 psi Steam Jacket Rating on 125 & 150 gallon models
- All Plumbing, Electrical, Hydraulics enclosed in Stainless Steel Consoles
- Enclosed, 10 Gauge Stainless Steel hydraulically operated Mixer Bridge
- Kettles and all exterior surface are Stainless Steel
- Large Pouring Lip
- Gallon Markings stamped into Scraper Shaft
- Level adjustable solid feet (for floor bolting)
- Standard 208-240 volts, 60 Hz, 3 phase, 4 wire
- Typical approvals include NSF and ASME

## Short Form Specifications

Shall be CLEVELAND Tilting Mixer Kettle Model MKDL - \_\_\_\_ -T, Console/Leg mounted, Direct Steam Mixer Kettle with \_\_\_\_ psi Steam Jacket Rating, 3 H.P. Hydraulic powered Scraper/Agitator and Bridge Lift. 0-40 rpm Scraper Speed with Variable Scraper to Agitator Ratio from 1-1 to 8-1. Stainless Steel enclosed Mixer Bridge. All Plumbing, Electrical and Hydraulics enclosed in Consoles. Gallon markings, Bayonet Mounted Scraper and Agitator. 3" Butterfly Valve. Hot and Cold Water Faucet. Steam Control Kit. Safety Device prevents high speed starts; Mixer stops when Bridge is lifted. Kettle and all exterior surfaces are Stainless Steel.

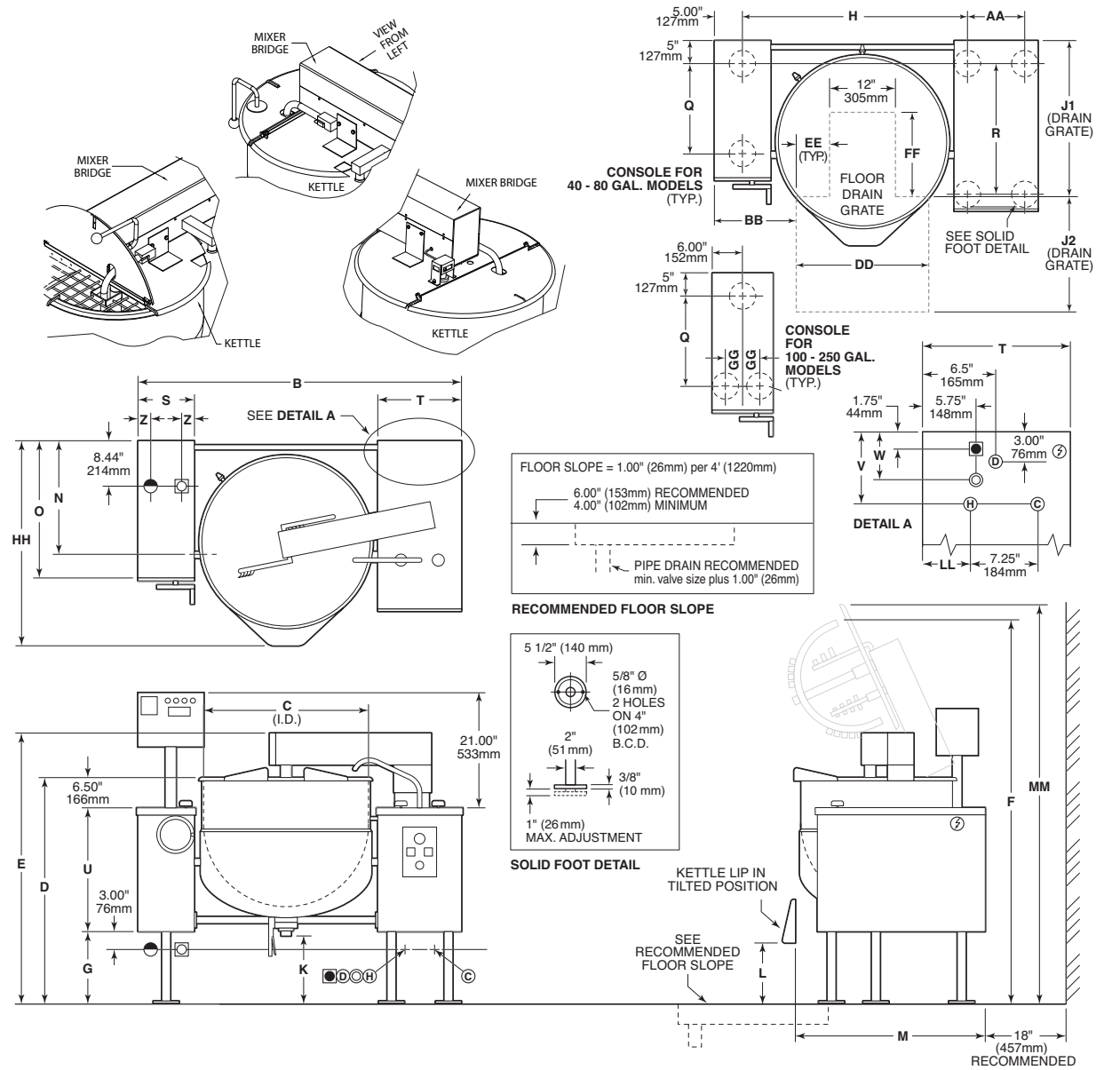
## Options & Accessories

- Product Time/Temperature Controls and Indicators
- Automatic Water Cooling (AWC-2)
- Alternate Draw-Off Valves
- Food Strainer (FS)
- Flow Diverter (FD)
- Pan Carrier (PCK)
- Swing Funnels (SF-1 or SF-2)
- Pressure Reducing Valve (PRV)
- Power Tilt (PT) where not standard
- Kettle Accessory Kit (KAK) includes:
  - Clean-up Brush (CB)
  - 36" Kettle Paddle (KP)
  - 36" Kettle Whip (KW)
  - 36" Kettle Brush (KB)
  - Draw-off Brush (DB)
  - 24 oz. Ladle (KL)
- Type 316 Stainless Steel Kettle Interior for high acid food products (316-12G)
- Water Meter (GMF or LMF) built into system
- Accessories for connection to Food Pumps
- Leg Extensions (ELTMK)

KE004046-77

**DIMENSIONS ("/mm)**

| GALL./LIT. | A      | B     | C     | D     | E     | F     | G     | H     | J1    | J2    | K     | L     | M      | N     | O      | P     | Q      | R     | S     | T     | U     | V    | W    | X    | Y    | Z    | AA    | BB    | CC    | DD    | EE    | FF     | GG   | HH    | LL    | MM   |
|------------|--------|-------|-------|-------|-------|-------|-------|-------|-------|-------|-------|-------|--------|-------|--------|-------|--------|-------|-------|-------|-------|------|------|------|------|------|-------|-------|-------|-------|-------|--------|------|-------|-------|------|
| 40/150     | 98.00  | 58.00 | 26.00 | 40.50 | 50.00 | 69.25 | 7.50  | 37.75 | 30.00 | 25.00 | 12.00 | 12.25 | 36.38  | 23.13 | 27.375 | 36.00 | 18.375 | 28.00 | 10.00 | 18.00 | 26.50 | 7.75 | 5.25 | 6.50 | 5.75 | 1.75 | 12.50 | 12.50 | 60.50 | 25.00 | 6.50  | 13.625 | na   | 39.00 | 5.375 | 74.2 |
| 2489       | 1473   | 660   | 1029  | 1270  | 1759  | 191   | 959   | 762   | 635   | 305   | 311   | 924   | 587    | 695   | 914    | 467   | 711    | 254   | 457   | 673   | 197   | 133  | 165  | 146  | 44   | 318  | 318   | 1537  | 635   | 165   | 346   | na     | 991  | 137   | 188   |      |
| 60/225     | 105.00 | 61.50 | 29.50 | 40.50 | 50.00 | 70.25 | 7.50  | 41.25 | 31.00 | 28.00 | 8.50  | 7.63  | 39.13  | 23.13 | 27.375 | 36.00 | 18.375 | 28.00 | 10.00 | 18.00 | 26.50 | 7.75 | 5.25 | 6.50 | 5.75 | 1.75 | 12.50 | 12.75 | 64.25 | 28.00 | 8.00  | 14.88  | na   | 40.75 | 5.375 | 75.2 |
| 2667       | 1562   | 749   | 1029  | 1270  | 1784  | 191   | 1048  | 787   | 787   | 216   | 194   | 994   | 587    | 695   | 914    | 467   | 711    | 254   | 457   | 673   | 197   | 133  | 165  | 146  | 44   | 318  | 324   | 1632  | 711   | 203   | 378   | na     | 1035 | 137   | 191   |      |
| 80/300     | 112.00 | 65.00 | 33.00 | 42.50 | 52.00 | 74.75 | 9.50  | 44.75 | 32.00 | 29.00 | 8.50  | 6.94  | 39.88  | 23.13 | 27.375 | 36.00 | 18.375 | 28.00 | 10.00 | 18.00 | 26.50 | 7.75 | 5.25 | 6.50 | 5.75 | 1.75 | 12.50 | 13.50 | 68.50 | 30.00 | 9.00  | 16.13  | na   | 42.75 | 5.375 | 79.7 |
| 2945       | 1651   | 838   | 1080  | 1321  | 1899  | 211   | 1137  | 813   | 711   | 216   | 176   | 1013  | 587    | 695   | 914    | 467   | 711    | 254   | 457   | 673   | 197   | 133  | 165  | 146  | 44   | 318  | 343   | 1740  | 762   | 229   | 410   | na     | 1086 | 137   | 202   |      |
| 100/375    | 121.00 | 69.50 | 35.50 | 44.50 | 54.00 | 78.25 | 11.50 | 48.25 | 33.00 | 29.00 | 8.50  | 6.69  | 41.13  | 23.13 | 29.375 | 36.00 | 18.375 | 28.00 | 12.00 | 18.00 | 26.50 | 7.75 | 5.25 | 6.50 | 5.75 | 2.50 | 12.50 | 15.75 | 73.25 | 32.00 | 10.00 | 17.00  | 3.25 | 43.75 | 5.375 | 83.2 |
| 3073       | 1756   | 902   | 1130  | 1372  | 1988  | 232   | 1226  | 838   | 737   | 216   | 170   | 1045  | 587    | 746   | 914    | 467   | 711    | 305   | 457   | 673   | 197   | 133  | 165  | 146  | 64   | 318  | 400   | 1861  | 813   | 254   | 432   | 83     | 1111 | 137   | 211   |      |
| 125/475    | 130.00 | 74.00 | 40.00 | 44.50 | 54.00 | 83.00 | 11.50 | 52.75 | 34.00 | 30.00 | 8.00  | 5.00  | 40.375 | 23.13 | 29.375 | 36.00 | 18.375 | 28.00 | 12.00 | 18.00 | 26.50 | 7.75 | 5.25 | 6.50 | 5.75 | 2.50 | 12.50 | 16.50 | 81.50 | 35.00 | 11.50 | 18.50  | 3.25 | 46.00 | 5.375 | 88.0 |
| 3302       | 1880   | 1016  | 1130  | 1372  | 2108  | 232   | 1340  | 864   | 762   | 203   | 127   | 1026  | 587    | 746   | 914    | 467   | 711    | 305   | 457   | 673   | 197   | 133  | 165  | 146  | 64   | 318  | 419   | 2070  | 889   | 292   | 470   | 83     | 1168 | 137   | 223   |      |
| 150/575    | 130.00 | 74.00 | 40.00 | 48.50 | 58.00 | 87.00 | 15.50 | 52.75 | 34.00 | 32.00 | 7.25  | 5.37  | 44.00  | 23.13 | 29.375 | 36.00 | 18.375 | 28.00 | 12.00 | 18.00 | 26.50 | 7.75 | 5.25 | 6.50 | 5.75 | 2.50 | 12.50 | 16.50 | 81.50 | 35.00 | 11.50 | 18.50  | 3.25 | 46.00 | 5.375 | 92.0 |
| 3302       | 1800   | 1016  | 1232  | 1473  | 2210  | 394   | 1340  | 864   | 813   | 184   | 137   | 1118  | 587    | 746   | 914    | 467   | 711    | 305   | 457   | 673   | 197   | 133  | 165  | 146  | 64   | 318  | 419   | 2070  | 889   | 292   | 470   | 83     | 1168 | 137   | 233   |      |



**ELECTRICAL** Ⓢ

| Supply Voltage | Phase | Wires | HZ | Supply Amps | Wire Size |
|----------------|-------|-------|----|-------------|-----------|
| 200-208        | 3     | 3     | 60 | 15          | 12        |
| 220-240        | 3     | 3     | 60 | 14          | 12        |
| 380-415        | 3     | 3     | 60 | 9           | 14        |
| 440-480        | 3     | 3     | 60 | 7           | 14        |

**STEAM JACKET RATING**

| PSI     | 35  | 50 | 70 | PSI      | 35  | 50  | 70 |
|---------|-----|----|----|----------|-----|-----|----|
| 40 Gal. | N/A | ST | OP | 100 Gal. | N/A | ST  | OP |
| 60 Gal. | N/A | ST | OP | 125 Gal. | ST  | N/A | OP |
| 80 Gal. | N/A | ST | OP | 150 Gal. | ST  | N/A | OP |

ST - Standard, OP - Optional, N/A - Not Available

- UTILITIES**
- Direct Steam - 3/4" NPT (40 - 80 Gal.), 1 1/4" NPT (100 - 150 Gal.)
  - Cold Water Faucet - 3/4" NPT
  - Cooling Water In - 3/4" NPT
  - Condensate Return - 3/4" NPT
  - Cooling Water Out - 3/4" NPT
  - Hot Water Faucet - 3/4" NPT
  - Automatic Drain - 3/8" NPT

- CLEARANCE**
- Right - 0, Left - 0
  - Rear - 18" (457mm) Recommended
  - 0 - Minimum
- Shipping Weights**
- Model - MKDL-60-T Weight - 740 lbs
  - MKDL-100-T Weight - 910 lbs

**NOTES:**  
 Cleveland Range reserves right of design improvement or modification, as warranted.  
 Many regional, state and local codes exist and it is the responsibility of the owner and installer to comply with the codes.  
 Installation of backflow preventers, vacuum breakers and other specific code requirements is the responsibility of the owner and installer.  
 Cleveland Range equipment is built to comply with applicable standards for manufacturers. Included among those approval agencies are U.L., A.G.A., NSF, ASME/N.Bd., CSA, CGA, ETL and others. (NOT TO SCALE)