

Item No. _____

Quantity _____

Job Name _____

Spec No. _____

DUNNAGE RACKS

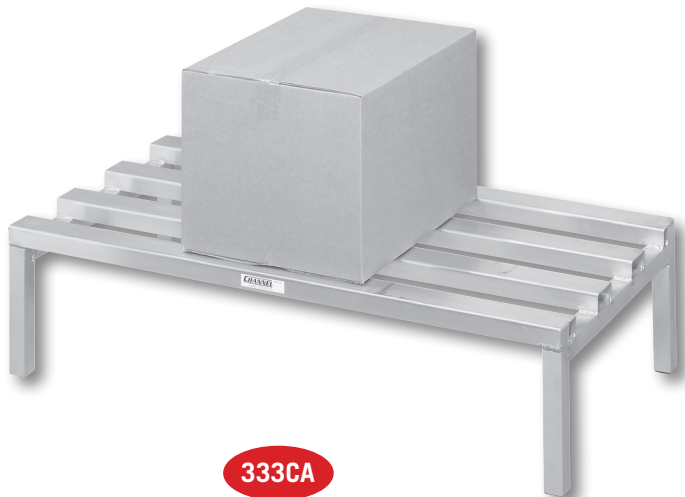
TUBULAR / CHANNEL ARCH

ALUMINUM CONSTRUCTION

Custom Sizes Available



333ED



333CA

TUBULAR DUNNAGE RACKS

| Model | H | W | D | Weight |
|---------|-----|-----|-----|--------|
| ED2024 | 12" | 24" | 20" | 11 |
| ED2036 | 12" | 36" | 20" | 12 |
| ED2042 | 12" | 42" | 20" | 13 |
| ED2048 | 12" | 48" | 20" | 14 |
| ED2054 | 12" | 54" | 20" | 15 |
| ED2060 | 12" | 60" | 20" | 16 |
| ED2072* | 12" | 72" | 20" | 19 |
| ED2424 | 12" | 24" | 24" | 12 |
| ED2436 | 12" | 36" | 24" | 13 |
| ED2442 | 12" | 42" | 24" | 14 |
| ED2448 | 12" | 48" | 24" | 15 |
| ED2454 | 12" | 54" | 24" | 16 |
| ED2460 | 12" | 60" | 24" | 17 |
| ED2472* | 12" | 72" | 24" | 20 |

CHANNEL ARCH DUNNAGE RACKS

| Model | H | W | D | Weight |
|---------|-----|-----|-----|--------|
| CA2024 | 12" | 24" | 20" | 12 |
| CA2036 | 12" | 36" | 20" | 13 |
| CA2042 | 12" | 42" | 20" | 14 |
| CA2048 | 12" | 48" | 20" | 15 |
| CA2054 | 12" | 54" | 20" | 15 |
| CA2060 | 12" | 60" | 20" | 17 |
| CA2072* | 12" | 72" | 20" | 20 |
| CA2424 | 12" | 24" | 24" | 13 |
| CA2436 | 12" | 36" | 24" | 14 |
| CA2442 | 12" | 42" | 24" | 15 |
| CA2448 | 12" | 48" | 24" | 16 |
| CA2454 | 12" | 54" | 24" | 17 |
| CA2460 | 12" | 60" | 24" | 18 |
| CA2472* | 12" | 72" | 24" | 22 |

Add ¹/₈ after model number for 8" height.

*Models over 60" have 3 sets of legs.

See **Mobile Dunnage Dollies** spec sheet for caster options.

APPLICATIONS: Aluminum dunnage racks keep product organized and off of the floor. Meets all sanitary health codes. Made to measure for walk-in freezers, refrigerators and dry storage areas.

CONSTRUCTION: Heavy duty, high tensile extruded aluminum. Type 6063-T5 alloy. Lifetime guarantee against rust. Shipped fully assembled and ready for use.

ED - Series: Tubular construction with 1-1/2" X 1-3/4" tubing. 2,200lb. distributed weight capacity.

CA - Series: Top channel arch 2-7/8" construction. 2,500lb. distributed weight capacity. Units over 5' long have 3 sets of legs.



Notes

55 Channel Drive • Port Washington, NY 11050-2216
 8891 NW 102nd Street • Medley, FL 33178
 Tel: 516-944-6271 • Fax: 516-944-0625
 Toll Free: 866-712-7283
 www.channelmfg.com • Email: sales@channelmfg.com