

Item No. \_\_\_\_\_

Quantity \_\_\_\_\_

Job Name \_\_\_\_\_

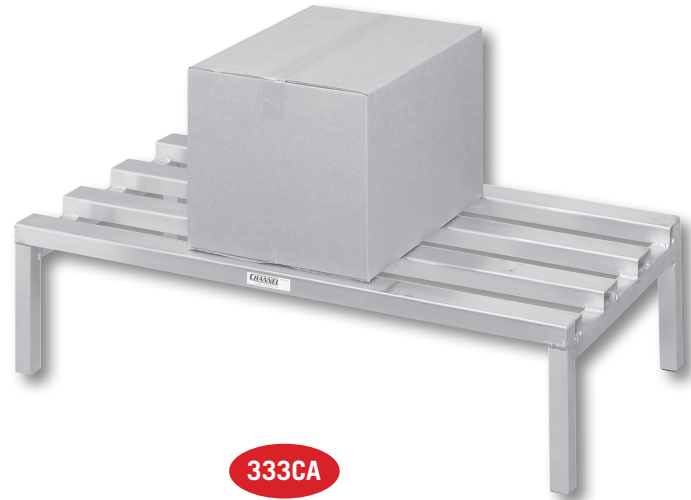
Spec No. \_\_\_\_\_

## DUNNAGE RACKS

### TUBULAR / CHANNEL ARCH

#### ALUMINUM CONSTRUCTION

Custom Sizes Available



#### TUBULAR DUNNAGE RACKS

Model	H	W	D	Weight
ED2024	12"	24"	20"	11
ED2036	12"	36"	20"	12
ED2042	12"	42"	20"	13
ED2048	12"	48"	20"	14
ED2054	12"	54"	20"	15
ED2060	12"	60"	20"	16
ED2072*	12"	72"	20"	19
ED2424	12"	24"	24"	12
ED2436	12"	36"	24"	13
ED2442	12"	42"	24"	14
ED2448	12"	48"	24"	15
ED2454	12"	54"	24"	16
ED2460	12"	60"	24"	17
ED2472*	12"	72"	24"	20

#### CHANNEL ARCH DUNNAGE RACKS

Model	H	W	D	Weight
CA2024	12"	24"	20"	12
CA2036	12"	36"	20"	13
CA2042	12"	42"	20"	14
CA2048	12"	48"	20"	15
CA2054	12"	54"	20"	15
CA2060	12"	60"	20"	17
CA2072*	12"	72"	20"	20
CA2424	12"	24"	24"	13
CA2436	12"	36"	24"	14
CA2442	12"	42"	24"	15
CA2448	12"	48"	24"	16
CA2454	12"	54"	24"	17
CA2460	12"	60"	24"	18
CA2472*	12"	72"	24"	22

Add <sup>1</sup>/<sub>8</sub> after model number for 8" height.

\*Models over 60" have 3 sets of legs.

See **Mobile Dunnage Dollies** spec sheet for caster options.

**APPLICATIONS:** Aluminum dunnage racks keep product organized and off of the floor. Meets all sanitary health codes. Made to measure for walk-in freezers, refrigerators and dry storage areas.

**CONSTRUCTION:** Heavy duty, high tensile extruded aluminum. Type 6063-T5 alloy. Lifetime guarantee against rust. Shipped fully assembled and ready for use.

**ED - Series:** Tubular construction with 1-1/2" X 1-3/4" tubing. 2,200lb. distributed weight capacity.

**CA - Series:** Top channel arch 2-7/8" construction. 2,500lb. distributed weight capacity. Units over 5' long have 3 sets of legs.



Notes

55 Channel Drive • Port Washington, NY 11050-2216  
 8891 NW 102nd Street • Medley, FL 33178  
 Tel: 516-944-6271 • Fax: 516-944-0625  
 Toll Free: 866-712-7283  
 www.channelmfg.com • Email: sales@channelmfg.com