

Camshelving® Elements XTRA Series

Undercounter Units 2 Vented Shelves Mobile and Stationary

HEIGHTS	DEPTHS	LENGTHS
2	2	3
27¼"	14"	24"
30"	18"	36"
		48"

- **Stationary Units include:**
2 factory assembled stationary post kits, 4 traverses, traverse dovetails and shelf plates.
- **Mobile Units include:**
2 factory assembled mobile post kits, 4 traverses, traverse dovetails, shelf plates and 4 premium swivel casters with total locking brake.

All units ship complete in 1 box.

Features & Benefits

- Designed to easily support the performance demands of a busy foodservice operation with medium to heavy storage needs.
- Designed to nest underneath standard height tables and counters. Withstands storage temperatures -36° to 190°F (-38° to 88°C). Impervious to moisture, chemicals, salt, food acids and humidity.
- Posts and traverses are made of a revolutionary, extremely strong composite material. Stronger than common wire shelving and lighter in weight than Camshelving Premium Series. Traverse dovetails attach easily to secure shelf traverses.
- Smooth polypropylene shelf plates contain Camguard, an antimicrobial technology that inhibits the growth of mold, fungus and bacteria that may cause odors, stains and product degradation.
- Posts and traverses wipe clean. Traverses and shelf plates remove easily for cleaning.
- Shelf traverses can be removed and adjusted at 4" (10,2 cm) increments.
- Sturdy reinforced nylon foot adjusts easily to level units.
- Premium caster is made of highly durable, non-corrosive plastic with a 5" (12,7 cm) swivel, non-marking thermoplastic rubber wheel. Total locking brake locks both swivel motion and the wheel.
- Requires some assembly with minimal parts. Use a rubber mallet only.
- Lifetime warranty against rust and corrosion (posts, traverses and shelf plates).
- Available in 1 color – Speckled Gray (480).

Project _____

Item No. _____

Model No. _____

Quantity _____



Mobile Undercounter Unit



Stationary Undercounter Unit

ELEMENTS SERIES WEIGHT BEARING CAPACITY

Weight must be evenly distributed across the entire shelf.

		UNIT LENGTH 24" – 48"
MOBILE UNIT	Unit only	200 lbs.
	Shelf only	100
STATIONARY UNIT	Unit only	200
	Shelf only	100

Approvals



Post Connectors, Corner Connectors, Floor Fastener, Wall Fastener, Identification Tags, Shelf Rails, Single Shelf Security Cage, Peg Board and Shelf Divider Bars are not NSF listed.



www.cambro.com

Information and specifications are subject to change without notice. Please confirm at time of order.

Telephone: (714) 848-1555 Toll Free: (800) 854-7631 Customer Service: (800) 833-3003

© Cambro Manufacturing Company Huntington Beach, California 92647

Printed in U.S.A. 09/23

D082307

Camshelving® Elements XTRA Series

Undercounter Units 2 Vented Shelves Mobile and Stationary

Project _____

Item No. _____

Model No. _____

Quantity _____

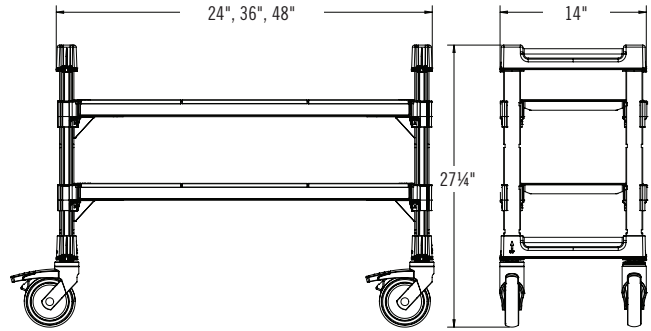
V2 2 Shelf Mobile Units

27¼"
HEIGHT

14"
DEPTH

CODE	DIMENSIONS D x L
EXMU142427V2	14" x 24"
EXMU143627V2	14" x 36"
EXMU144827V2	14" x 48"

Color: Speckled Gray (480).



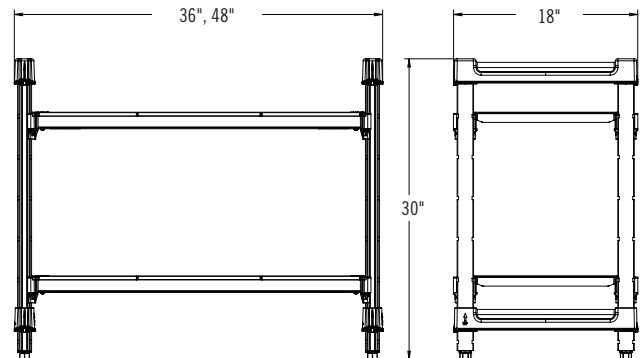
V2 2 Shelf Stationary Units

30"
HEIGHT

18"
DEPTH

CODE	DIMENSIONS D x L
EXU183630V2	18" x 36"
EXU184830V2	18" x 48"

Color: Speckled Gray (480).



Optional Accessories

- Bottom Shelf Dunnage Stands (Low or Tall)
- Shelf Identification Tags
- Wall Fastener
- Seismic Foot
- Shelf Divider Panel (18" Deep Only)
- Shelf Rails

Architect Specs

Posts and Traverses: Proprietary non-corrosive composite material.
 Post Connectors: Reinforced Polypropylene.
 Shelf Plates: Reinforced polypropylene with Camguard® antimicrobial.
 Adjustable Foot: Reinforced nylon.
 Traverse Dovetails: Reinforced nylon.
 Post Connector Collar Wedges: Reinforced nylon.
 Caster: Non-corrosive plastic body and brake with non-marking thermoplastic rubber wheel.

Approvals



Post Connectors, Corner Connectors, Floor Fastener, Wall Fastener, Identification Tags, Shelf Rails, Single Shelf Security Cage, Peg Board and Shelf Divider Bars are not NSF listed.

CAMBRO®

www.cambro.com

Information and specifications are subject to change without notice. Please confirm at time of order.

Telephone: (714) 848-1555 Toll Free: (800) 854-7631 Customer Service: (800) 833-3003

© Cambro Manufacturing Company Huntington Beach, California 92647

Printed in U.S.A. 09/23

EXCS9

D082307