

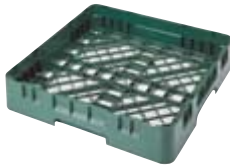
CAMRACK® BASE RACKS

- For pots, pans, bowls and large prep, service and display items.
- Half racks work well for storing items at a wait station.



BR578

Full Size Base Racks



FULL BASE RACK

WITH 1 EXTENDER

WITH 2 EXTENDERS

WITH 3 EXTENDERS

| CODE | BR258 | BR414 | BR578 | BR712 |
|---------------------|---------------------------------------|--|--|--|
| INSIDE RACK HEIGHT | 3¼" (8,3 cm) | 4⅞" (12,4 cm) | 6½" (16,5 cm) | 8⅞" (20,6 cm) |
| OUTSIDE RACK HEIGHT | 4" (10,1 cm) | 5⅞" (14,3 cm) | 7¼" (18,4 cm) | 8⅞" (22,5 cm) |
| CASE PACK | 6 | 5 | 4 | 3 |
| RACK DIMENSION | 19¼" x 19¼" x 4" 50 x 50 x 10,1 cm | 19¼" x 19¼" x 5⅞" 50 x 50 x 14,3 cm | 19¼" x 19¼" x 7¼" 50 x 50 x 18,4 cm | 19¼" x 19¼" x 8⅞" 50 x 50 x 22,5 cm |

Half Size Base Racks



HALF BASE RACK

WITH 1 EXTENDER

WITH 2 EXTENDERS

WITH 3 EXTENDERS

| CODE | HBR258 | HBR414 | HBR578 | HBR712 |
|---------------------|--------------------------------------|---------------------------------------|---------------------------------------|---------------------------------------|
| INSIDE RACK HEIGHT | 3¼" (8,3 cm) | 4⅞" (12,4 cm) | 6½" (16,5 cm) | 8⅞" (20,6 cm) |
| OUTSIDE RACK HEIGHT | 4" (10,1 cm) | 5⅞" (14,3 cm) | 7¼" (18,4 cm) | 8⅞" (22,5 cm) |
| CASE PACK | 6 | 5 | 4 | 3 |
| RACK DIMENSION | 19¼" x 9⅞" x 4" 50 x 25 x 10,1 cm | 19¼" x 9⅞" x 5⅞" 50 x 25 x 14,3 cm | 19¼" x 9⅞" x 7¼" 50 x 25 x 18,4 cm | 19¼" x 9⅞" x 8⅞" 50 x 25 x 22,5 cm |

Full Size Hold Down Grid

Keeps lightweight smallwares in place during wash cycle. Use on full size Camrack Base or Flatware rack.



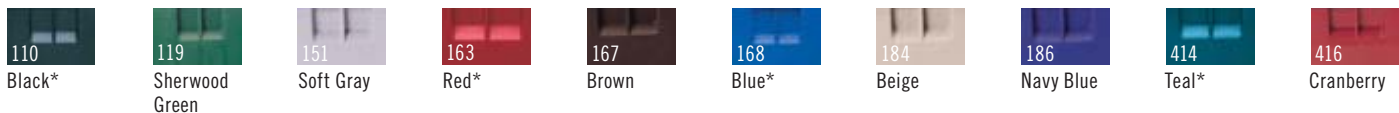
BR414 with
CRPHDG2878

HOLD DOWN GRID

| CODE | CRPHDG2878 |
|------|------------|
| | |

Case Pack: 6 Color: Gray (000).

Base Rack Colors:



*Full size only. Extender Color: Soft Gray (151). Personalization available. See Camrack personalization and color coding page. Contact Customer Service for all special orders.